



VOTE IN THE  
WJC ELECTION

SEE PAGE 3

# FIRST SEDER APRIL 12

## Preparation for Pesach

If you're going to be shopping at Stop & Shop, please purchase gift cards from the BEKI office; they work like debit cards. This ongoing fundraiser costs you nothing. Contact [Peggy](#) at the BEKI office to arrange pickup.

Cleaning for Passover is complicated! Please consult the Rabbinical Assembly Pesach preparation [guide](#) or the Hadar Pesach preparation [guide](#).

## Donate Your Hametz

BEKI's food drive from 9 to 12 noon on Sunday, April 6 is a joint project of BINA, our religious school, and the Hesed Committee. We encourage you to give away unopened, non-perishable *hametz* before Pesach. Please bring your food—nothing past expiration—into the lobby. If you have questions, please write or call Robert Lettick at [robolettick@aol.com](mailto:robolettick@aol.com) or 203.671.4705.

## Pre-Passover Shabbat dinner

We'll have a congregational Shabbat dinner on Friday, April 11, catered by Claire's Corner Copia, at 6 pm, followed by Kabbalat Shabbat services at 7 pm. Costs are \$25 for ages 12 and up; \$10 for under 12. [Pre-registration](#) is required by Monday, April 7.

Since the Shabbat immediately preceding Pesach is complicated halachically—homes already will be kashered for the holiday, which means that hametz will not be allowed, but we can't eat matzah yet—we're arranging an easy, fun way to enjoy Shabbat dinner.

## Maot Chittim

It's a tradition to collect "money for wheat" (donations for the poor for Passover). We encourage you to send a check marked for *Maot Chittim* to the Rabbi's Tzedakah Fund.

**This Passover Lazy Susan by Sticks is available at the Sisterhood Shop. Shopping details on page 8.**



המקום ינחם  
*HaMakom Yinachem*

*With sorrow we note the passing of*

**Michael Rosenberg**

Brother of Helen Rosenberg (& Keith Richter)

*May the Almighty comfort those who mourn*

**Welcome New Member**  
Judy Stein

## BEKI Bulletin

The newsletter is published monthly by Congregation Beth El-Keser Israel for the benefit of its members.

Congregation Beth El-Keser Israel is affiliated with the United Synagogue of Conservative Judaism.

To contribute articles or for inquiries regarding membership:

- Call the Synagogue office: 203.389.2108
- Write: 85 Harrison Street, New Haven, CT 06515-1724
- Email: [bulletin@beki.org](mailto:bulletin@beki.org)
- Visit our web page: [www.beki.org](http://www.beki.org)
- Follow us on social media:  
- For advertising information, call the synagogue office.

Deadline for submission of ads or articles is the first of the month preceding publication.

Annual subscription is \$36

BEKI Bulletin © 2025 Congregation Beth El-Keser Israel.

Editor

Rachel Bashevkin

Associate Editors

Donna Levine Donna Kemper

Nancy Meyers David Spitzer

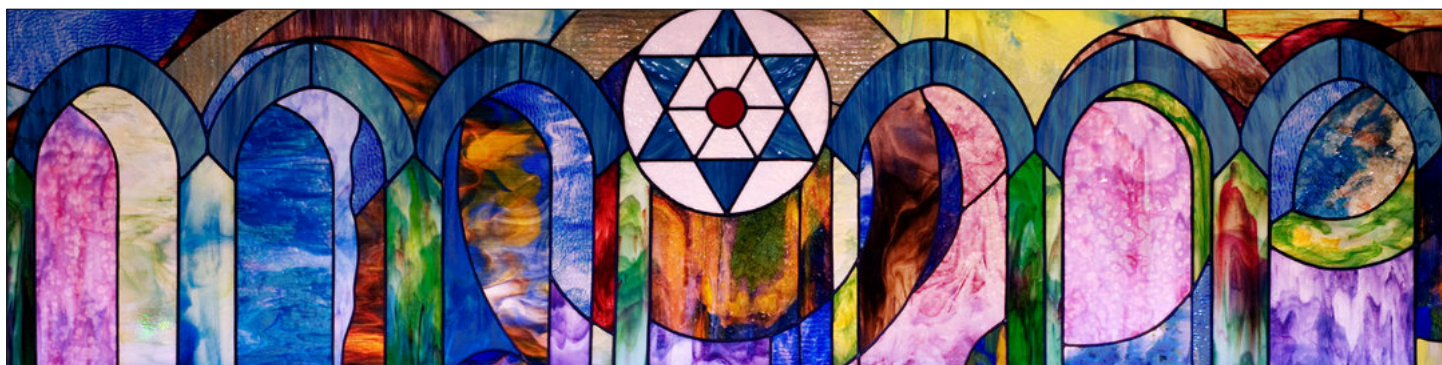
## Board of Directors

**If you have questions or concerns, please speak with a Board member.**

Russell Epstein (president) [president@beki.org](mailto:president@beki.org)  
Jennifer Myer (vice-president)  
Jay Sokolow (vice-president)  
David Levy (treasurer)  
Donna Levine (secretary)  
Murray Akresh  
Rachel Bashevkin

Harold Birn  
Rachel Doft  
Eric Dunsker  
Mimi Glenn  
Michael Hurwitz  
Yaron Lew  
Sam Purdy

Ali Rosen  
Tamara Schechter  
Rob Schonberger  
Rebecca Weiner  
Elan Weinstock  
Evan Wyner



BEKI STAINED GLASS WINDOW DESIGN BY CYNTHIA BETH RUBIN

## Shabbat Schmooze April 26

Emily Levy-Shochat will speak on the topic “Make Your Voice Heard” on Saturday, April 26 at 12:45 pm, after services and kiddush lunch.

A committed activist, she will speak about how our voices as American Jews can help protect Israel’s future as a Jewish and democratic state—while also strengthening the Jewish people and pluralism worldwide.

Levy-Shochat, who made *Aliya* almost 50 years ago, was the Chairperson of Masorti Israel for 5 years, leading successful efforts to develop and grow Conservative Judaism in Israel. Representing the Masorti community, she has served on the Keren Kayemet L’Yisrael (JNF) Board for six years, during which time she was Chairwoman of its Environment and Science Committee.

Dedicated to strengthening civil society, to maintaining Israel’s democracy, to protecting human rights, and to strengthening citizens’ influence in the public sphere, she has been a board member for the Israel Association for Ethiopian Jewry; Agudat Adi, promoting organ donations; and a leadership program for Israeli Arab early childhood professionals.

Her 40-plus year career has focused on grass roots community development and training within the non-profit world. She was the CEO of two NGOs as well as a lecturer and supervisor in Community Development at Hebrew University.

Levy-Shochat holds a B.A in Economics from UConn and an M.A. in Contemporary Jewish Studies from the Hornstein Program, Brandeis University.



Emily Levy-Shochat



Your vote for [MERCAZ USA](#) (slate 17) in this online election will help us secure millions that our own synagogues, Ramah camps, USY programs, and Sisterhoods rely on here at home.

Your vote for MERCAZ is a vote to strengthen our Conservative / [Masorti](#) Movement.

It’s a vote against extremists like Itamar Ben Gvir who delegitimize Masorti Judaism and threaten Israeli democracy.

Your [vote](#) is how we stop their agenda. We must stand up and be counted. Let’s use our collective voice to reject a narrow view of Judaism and turn our inclusive, pluralistic values into action, especially as extremism threatens to pull our community apart. [Voting](#) closes on Sunday, May 4.



**This ceramic Seder plate by Jennifer Wankoff is available at the Sisterhood Shop. Shopping details on page 8.**

## Sanctuary Construction Update

Sanctuary construction is progressing well, and we are confident that the cost will remain within our \$1,250,000 budget.

Follow the construction progress on the [BEKI Facebook group](#) and on the [BEKI website](#), where we're posting new photos about once a week.

As of the end of February, pledges and donations total \$873,000 of which \$747,000 has already been paid. To make up the remainder of our construction budget, we've taken out a bank loan.

Meanwhile, we are continuing efforts to reach our \$1,250,000 fundraising goal. We are asking every member to give something—including our many members who joined BEKI after our initial fundraising campaign. And we ask those who already made donations or pledges to consider giving more.

We prefer that pledge payments be made this fiscal year ending June 30. However, if it will allow you to increase the amount of your pledge, we will accept payment over a longer period. If you are over age 70½ or have appreciated securities, you may be able to take advantage of existing tax laws. We would be happy to provide additional information.

Please contact Peggy in the BEKI office to make your pledge. Email her at [office@beki.org](mailto:office@beki.org) or call 203-389-2108 ext. 114.

## Meet our Newest Member

*Here is the next installment of introductions, written by our members themselves. Printouts of all of these bios are posted near the Goodwin Youth Room.*

### Judy Stein

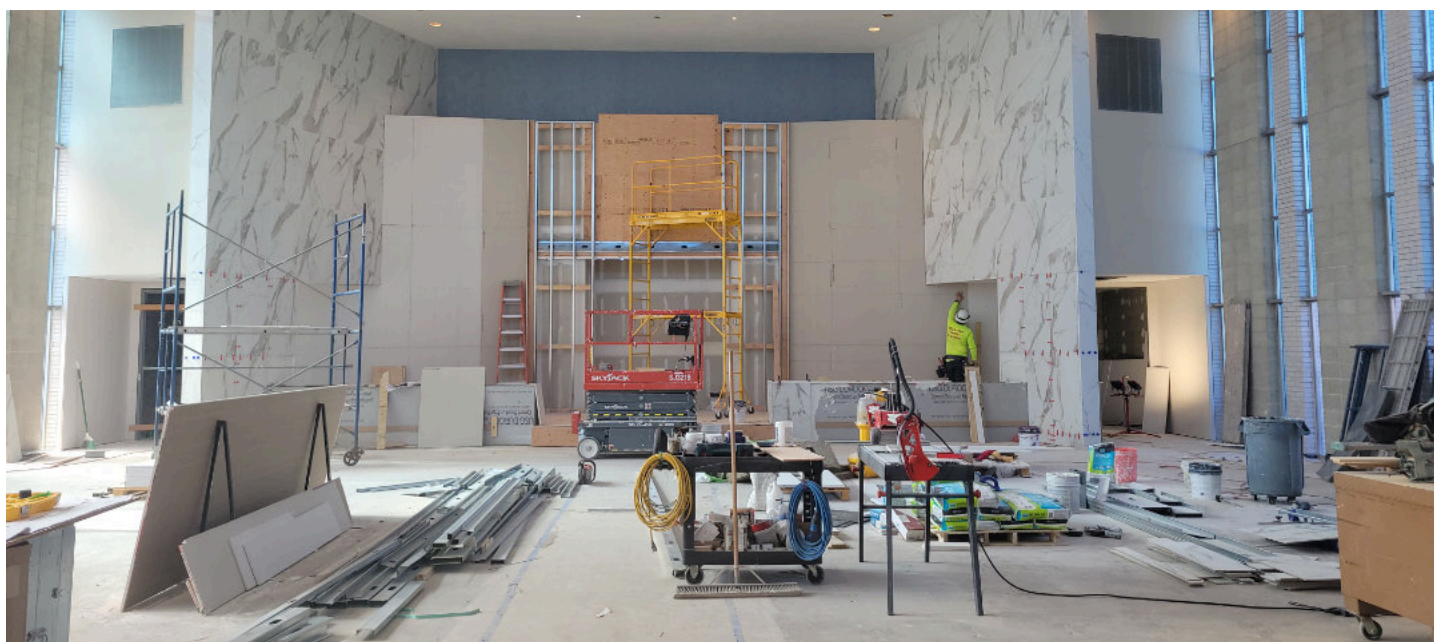
Hi. I recently moved back to Westville—after being away for 25 years—to be closer to my daughter and grandchildren. I have two granddaughters in New Haven and a son and two granddaughters in NYC.

I am very passionate about my pets: two dogs (Maddy and Bingbing) and my cat (Simon), and I love to work on dollhouses.

I have not been a member of a Jewish community for a long time, and I am excited to join the warm community at BEKI.

## Judy Sirota Rosenthal Talk

Artist [Judy Sirota Rosenthal](#) will present a Shabbat Schmooze at 12:45 pm on April 5, following services and kiddush lunch. Her current exhibition at BEKI, “Art as Prayer, Prayer as Art,” includes her inspirational calligraphy and color field renditions of the texts.



**The front of the sanctuary is taking shape. Now you can see the stone-tile-covered wing walls, the bimah, and the ark compartment. The construction worker is standing next to where the right ramp will emerge onto the bimah, with the planters in front.**



## Calling All BEKI Musicians!

Our concert featuring BEKI musicians—vocal or instrumental—on Sunday, May 18, from 4:30 to 5:45 pm, will benefit JCARR, our local Jewish Community Alliance for Refugee Resettlement.

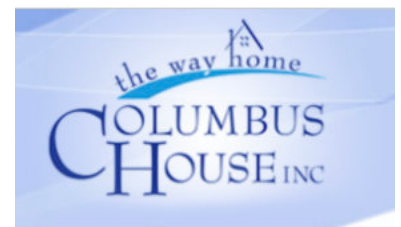
Admission is free, but we'll pass the hat for donations to JCARR.

Are you interested in participating? If so, email Jennifer Mellon at [jnmellon@hotmail.com](mailto:jnmellon@hotmail.com).

**Performers at BEKI's 2024 benefit concert for JCARR. Top: Marty Ganter. Below: David Levy and Tom Goldenberg.**

## Columbus House Dinners

At Columbus House on the 4th Sunday of every month, BEKI volunteers provide a complete meal for people experiencing homelessness. Volunteer for one or both shifts: prepping and cooking from 3 to 4:30 pm; serving and cleanup from 4:30 to 6 pm. *Public high school students should note that these shifts count for New Haven Promise and volunteer credit.* To help, contact Angela, [adotoren@gmail.com](mailto:adotoren@gmail.com).



## JCARR Family 10 Update

Because the current administration suspended all refugee resettlement, the family we hoped to bring to New Haven cannot enter the U.S. Instead, we have adopted a refugee family of four already in this country. To find out how you can help Family 10, contact BEKI's liaison to JCARR, Jennifer Mellon, at [jnmellon@hotmail.com](mailto:jnmellon@hotmail.com).

**These are just some of the children's Passover books available at the Sisterhood Shop. Shopping details on page 8.**



# New Endowment Fund Established

In February, an anonymous donor established the B'tzelem Elokim Fund for Congregation Beth El-Keser Israel, which will provide a permanent source of support for programs that educate the community about the inclusion of Jews of Color or LGBTQ+ Jews at BEKI. The fund's name refers to the teaching that everyone is created B'tzelem Elokim, in the image of God.

Money for B'tzelem Elokim programming will be available to BEKI starting in March 2026. While the fund started with \$10,000, everyone is welcome to donate to it.

"We are thrilled every time an endowment is created for the benefit of BEKI," Donna Levine, Finance Committee chair, said, "and this gift is especially meaningful in the times we are living through, where the values of diversity, equity and inclusion are being attacked."

Endowments are crucial to BEKI's finances. In the current budget, endowment income covers almost a quarter of

our expenses. We are grateful that—thanks to these funds—we can balance our budget. Since dues and fundraising are not enough to pay our bills, we need to continue to grow our endowments.

Those who pledge a gift of \$10,000 or more can create a named fund, and those who give a legacy gift of less have their contribution added to our Legacy L'Chayim Fund at the

Jewish Foundation.

If you would like to be a Legacy Donor, please contact Donna Levine at [sdsij@aol.com](mailto:sdsij@aol.com) or 203-668-6473. Free of charge, she will write a codicil (amendment) for your current will, noting an amount or percentage of your estate that you will leave to BEKI; or help you make BEKI a beneficiary of a life insurance policy; or help you make BEKI a beneficiary of your IRA, since those assets will net a larger amount for BEKI than for your children.



## Thank you, Kiddush Teams

We're grateful that these dedicated volunteers prepare our Shabbat lunch—the kiddush teams on a Thursday each month and the baking team on a Sunday each month.

Apologies to anyone whose name we omitted.

### Coordinators

Ellen Cohen  
Abby Fraade

### Baking Team

Jennifer Myer, *leader*  
Susan Epstein, *leader*  
*an ad hoc group*

### Team 1

Jennifer Myer, *leader*  
Ina Silverman, *shopper*  
Max DuBoff  
Andy Hirshfield  
Margie Hirshfield  
Karel Koenig  
Joanne Rudof  
Lynn Saltz  
Rebecca Weiner

### Team 2

Diana Firestone, *leader*  
Tema Leviter, *leader*  
Joanne Rudof, *shopper*  
Miriam Feinstein  
Ada Fenick  
Alexis Grant  
David Heilbron  
Jacob Botwick Ries  
Helen Rosenberg  
David Spitzer

### Team 3

Margie Wiener, *leader*  
Robert Lettick, *shopper*  
Barbara Akresh  
Holly Chepow  
Diane Krevolin  
Trish Loving  
Carol Marcus  
Nancy Meyers  
Jessey Palumbo  
Linda Schultz  
Lisa Woodward  
Michael Woodward

### Team 4

Susan Epstein, *leader and shopper*  
Sharon Astor  
Isaiah Cooper  
Kelin Gersick  
Gary Hochman  
Helene Sapadin  
Eleanor Schiff  
Eva Shragis

### JCC Needs Camp Counselors

The Jewish Community Center at 360 Amity Road in Woodbridge is [hiring](#) summer camp counselors. Staff training runs June 16-20. [Camp](#) runs June 23-August 15, 8:30 am to 4 pm. Candidates must be age 16 by June 24.

### BEKI Funds for Summer Programs

We have various BEKI funds that can provide some help for BEKI children attending Camp Ramah. Please consult Rabbi Woodward for details.

### Jewish Camp Scholarships

The website “[One Happy Camper](#)” helps families explore a variety of traditional and specialty Jewish day and overnight camps. Some camps offer need-based financial assistance, and parents are encouraged to inquire about the level of assistance available. In addition, the Jewish Foundation of Greater New Haven offers needs-blind incentive [grants](#) of up to \$1,000 for first time campers as well as needs-based scholarships for all campers.



USY teens Avital Shaham, Sammi Barkon, and Elisabeth Oppenheimer bake in the BEKI kitchen.

### Shakespeare Camp at BEKI

Elm Shakespeare Players Camp is returning to BEKI.

The program, for ages 7 to 12, runs weekdays July 7-18 and July 21-August 1, 9 am-3 pm, with after-care if there's sufficient interest. [Register](#) with Elm Shakespeare.

### Scholarships for Israel Trips

The Jewish Foundation of Greater New Haven provides Israel Experience scholarships for Teens and Young Adults. [Applications](#) for summer trips are due by April 7.

USY is offering a variety of [trips](#)—in North America and Israel—this summer. All participants in [Yuval Yisrael](#) programs are eligible for a [RootOne Voucher](#) subsidy of \$3,000.



BEKI kids volunteered to pack bags in the Food4Kids program at the Jewish Family Service Food Pantry.

### Rabbi's Tzedakah Fund

- In memory of Rich Kramer by Ruth Silver
- To Linda Schultz with sympathy on the passing of Susan Schultz by Betsy & Glenn Schuman
- To Lisa Woodward and family with sympathy on the passing of Renee Stuart by Jessej & Joe Palumbo

### Kiddush Sponsors

- The Lebowitz Family
- Joanne & Steve Rudolf
- Helen Rosenberg
- Grinspoon Foundation & Jewish Foundation

### Chai/Synagogue Fund to support synagogue operations

#### To Linda Schultz with sympathy on the passing of Susan Schultz by

- Don Sackheim
- Rona Gralla
- Lisa Stanger & Greg Colodner
- Marsha Beller & Rob Hoffnung
- Diane Krevolin
- Margie Wiener
- Sid & Donna Levine (to the Ari Nathan Levine Children's Library Fund)

#### To Linda Schultz in memory of Howard Gralla on his first yahrzeit by

- Rona Gralla
- Marsha Beller & Rob Hoffnung
- Ina Silverman & Jay Sokolow

#### To Aaron Robbins in honor of his Bar Mitzvah by

- Cathie & Ron Miller

#### To Jessej & Joe Palumbo with sympathy on the passing of David Tugentman by

- Margie Wiener

#### To Isaiah Cooper & Helene Sapadin with sympathy on the passing of Peter Cooper by

- Jessej & Joe Palumbo
- Rena Cheskis-Gold & Marty Gold (to the Barzillai Cheskis Youth Israel Scholarship Fund)

#### To Marc & Carol Weitzman with sympathy on the passing of Donald Weitzman by

- Rena Cheskis-Gold & Marty Gold (to the Barzillai Cheskis Youth Israel Scholarship Fund)
- The Gad Family
- Dan & Beth Weintraub

#### To Roy Herbst & Karen Merkel-Herbst with sympathy on the passing of Saul Herbst by

- Dan & Beth Weintraub

#### To Helen Rosenberg & Keith Richter with sympathy on the passing of Michael Rosenberg by

- Joanne Foodim & Rob Forbes
- Sid & Donna Levine (to Hesed)
- Dan & Sharon Prober
- Diane Krevolin
- Rena Cheskis-Gold & Marty Gold (to the Barzillai Cheskis Youth Israel Scholarship Fund)
- Steve & Rachel Wizner
- Ina Silverman & Jay Sokolow
- Dan & Beth Weintraub

#### To Eva & Frank Schultz and family in honor of the birth of Juliana by

- Jessej & Joe Palumbo

### Yahrzeit Fund to support synagogue operations

#### In Memory of:

- Mort A. Silver by Ruth Silver
- Her husband Sidney Cushen by Barbara

#### Cushen

- Howard Gralla by Linda Schultz
- Reuben Gralla by Linda Schultz
- Eleanor Hepler by Linda Schultz
- Her father Reuben Gralla by Rona Gralla
- Her aunt Elenor Hepler by Rona Gralla
- Abraham Goldman by Judy & Martin Shore
- Thelma Chernikoff by Janet Chernikoff
- Israel Chernikoff by Janet Chernikoff
- Her father George Brunswick by Barbara Cushen
- Jack Nankin by Sheldon Nankin
- Harriet Kroop by Donna & Cliff Cohen
- William Miller by Bobbie & Harold Miller
- Reuben "Ruby" Vine by Roberta Vine
- Walter Greenwald by Roberta Vine
- Aaron Ignal by Alan & Toby Ignal
- Maurice Savin by Ronald & Melrene Savin
- Eunice Rogoff by Jonathan Eagan
- Phillip Abramowitz by Marcia & John Gell
- Rose Witten by Marvin & Susan Witten
- Bessie Kaufman by Ann Cassarino
- Harry Thal by Phyllis Boyar
- Her dear mother Kitty Greenberg by Toby & Alan Ignal
- His grandmother Anna Ignal by Alan & Toby Ignal
- Her Parents Edith & Maurice Levy by Paula Rudnick
- Abraham Epstein by Kranie & Earl Baker
- Shulamith Lubarr by Gila Reinstein
- Her brother John Merkel by Karen Merkel-Herbst & Roy Herbst
- Ruth Brown by Lauren Brown
- Harold Brown by Lauren Brown
- Phillip Brown by Lauren Brown
- James Joseph Barnett by Caroline Barnett

## Sisterhood Shop

We have lovely items to enhance your Passover celebration: a beautiful Lazy Susan by Sticks (see photo on page 1), a handmade ceramic Seder plate by Jennifer Wankoff (see photo on page 3), and cute frog dishes (see photo on page 12). We also have Lovepop three dimensional cards—the cards are the gift! (see image to the right) The shop is stocked with children's books (see photo on page 5) and Passover toys.

Come in and see us. If you don't see what you want, we can get it for you! The Sisterhood Shop is open every day by appointment, except Shabbat. We are happy to meet you. You can usually drop in around minchah/maariv, but it's best to text or call first: Karen 203.430.2182 or Harriet 203.675.8607.



**It's not too late** to make a pledge or donation to the **Sanctuary Redesign**, or to increase the amount that you have already given.

Contact Peggy in our office, or speak to a member of the Fundraising Committee:

John Weiser, Murray Akresh  
Jessey Palumbo, or John Wareck.

### Learn how you can live forever!

Be remembered forever by BEKI with a gift in your will, trust, retirement account, or life insurance policy.

For more information on how you can make these arrangements, contact Finance Chair Attorney Donna Levine at [sdsij@aol.com](mailto:sdsij@aol.com) or 203-668-6473.

If you have included BEKI in your estate plans, please let us know.



## ROBERT E. SHURE INC.

FUNERAL HOME

Dedicated to the Dignity and Respect of Tradition

543 George Street New Haven CT 06511

Robert E. Shure  
Founder

203-562-8244  
[shurefuneralhome.com](http://shurefuneralhome.com)

James M. Shure  
President

**RAVIT AVNI-SINGER, MSW LCSW**  
CHILD, ADOLESCENT AND ADULT PSYCHOTHERAPY  
PARENT CONSULTATION

1 BRADLEY ROAD, SUITE 906  
WOODBIDGE, CT 06525

(203) 389-9174  
BY APPOINTMENT



40 Boston Post Rd (RT 1)  
West Haven CT 06516  
203-933-2886

888 Wethersfield Ave  
Hartford CT 06114  
860-296-9799

[www.startireandwheels.com](http://www.startireandwheels.com)  
Andy & Paige Weinstein

# NOLAN'S

HAMDEN MONUMENT COMPANY

LICHTENSTEIN COMPANY

323 Washington Ave. Hamden CT 06518

(203) 288-8486

(203) 287-1593

CT toll free only (800) 852-8865

Fax (203) 287-1593

John Nolan

Michael Nolan

[nolansmonuments@att.net](mailto:nolansmonuments@att.net)

## Child and Adolescent Health Care L.L.C.

A. Joseph Avni-Singer. M.D. FAAP

Shari Storeygard M.D. FAAP

Shannon Martinello M.D. FAAP

Miranda Bik-Yin Ip M.D. FAAP

Namita Wijsekera M.D. FAAP

303 WHITNEY AVENUE  
NEW HAVEN CT 06511  
(203) 776-1243  
FAX (203) 785-1247

1 BRADLEY ROAD SUITE 102  
WOODBIDGE CT 06525  
(203) 397-1243  
FAX (203) 397-1241

MICHAEL MARTONE  
MANAGER

*Arnold's Jewelers*



DIAMONDS - WATCHES - GIFTS  
CHINA - SILVER - CRYSTAL

WATCH AND  
CLOCK REPAIRING

NORTH HAVEN SHOPPING CENTER  
NORTH HAVEN, CONN. 06473  
203-239-4291



**Challenging Minds,  
Nurturing Hearts**



## Grow with us!

Ezra Academy is a preschool through 8th grade Jewish day school offering outstanding academics and a nurturing community, rooted in the Jewish tradition of critical thinking and ethical behavior.

**EZRA ACADEMY  
WELCOMES A WIDE  
SPECTRUM OF RELIGIOUS  
AND CULTURAL BELIEFS  
AND AFFILIATIONS.**

**LEARN MORE:**  
[EzraAcademyCT.org](http://EzraAcademyCT.org)  
[Info@EzraAcademyCT.org](mailto:Info@EzraAcademyCT.org)  
203-389-5500





*What will your Jewish legacy be?*

**Eric Dunsker Created a Legacy for His Synagogue,  
Congregation Beth El-Keser Israel**

*"I've lived in a number of places and belonged to a number of synagogues. By far, BEKI has been the most welcoming, not only of my membership, but also of my active participation in its activities and operation. How could I not want to keep this going for those who come after me?" –Eric*

Create Your Jewish Legacy Today by Scanning the **QR Code** or Visiting [newhavenjewishfoundation.org/create-a-jewish-legacy](http://newhavenjewishfoundation.org/create-a-jewish-legacy)

For more information, contact the Jewish Foundation of Greater New Haven  
Lisa Stanger, Executive Director | (203) 387-2424, ext. 382 | [lstanger@jewishnewhaven.org](mailto:lstanger@jewishnewhaven.org)  
Tamara Schechter, Create a Jewish Legacy Manager | (203) 387-2424, ext. 325 | [tschechter@jewishnewhaven.org](mailto:tschechter@jewishnewhaven.org)



**DAVID B. MARGOLIS, C/C**  
MANAGER

📍 1768 Litchfield Turnpike, Suite 1  
Woodbridge, CT 06525  
☎ Direct: 203.907.4829 T: 203.389.4511  
C: 203.668.0344 F: 203.397.2266  
✉ [david.margolis@crossagency.com](mailto:david.margolis@crossagency.com)



PERSONAL COMMERCIAL BENEFITS

[www.CrossAgency.com](http://www.CrossAgency.com)

**Coachworks**  
of West Haven  
Auto Body Shop

1058 Orange Avenue • West Haven, CT 06516  
Tel: 203.932.1200 Fax: 203.932.1222  
Scott Walstedter

**BEKI'S FAVORITE  
DJ/MC ENTERTAINMENT**

**CALL CHARLES!!!  
203.795.4737**

# THIS YEAR'S PASSOVER GUIDE

**T**his year, the holiday of Pesach begins on Saturday, April 12, with the first Seder the night of April 12 and the second Seder the night of Sunday, April 13. When Passover falls on Saturday night, we encounter all sorts of



**Eric Woodward**

new and surprising halakhic complexities. The complexities won't necessarily make for a harder holiday. Think of them instead as new and interesting challenges that shake up our routines. This happened also in 2021—although that was in the midst of a pandemic, so the whole holiday felt different—and before that, in 2008 and 2005. In other

words, it's been a while! Here's how it affects us.

## Owning and Eating Hametz

The rules of Pesach prevent us from both eating and owning hametz. The latest time that we can eat hametz is 10:40 am on Saturday, April 12. The latest time that we can own hametz is 11:46 am on that same day. Shabbat ends—and the seder begins—at 8:12 pm that night.

On Thursday night, after 8:10 pm, we do the search for hametz in our home—*bedikat hametz*—with the [blessing](#) and the legal formula for annulment of hametz. (This legal formula causes any hametz in our possession that we have not already disposed of to be considered ownerless, like dust.)

However, you will likely still be eating hametz on Friday and even into Saturday morning. The legal formula is still fine to use and will retroactively apply even to hametz that you disperse after saying it. We will burn hametz Friday morning by 11:47 am.

What about Shabbat? To make our lives easier, we are hosting a communal catered pre-Pesach Shabbat dinner at BEKI Friday night, April 11, at 6 pm (see page 1). This will be a hametz meal that we will eat in the lower social hall; we will clean up well afterwards so that there will be no hametz left in the building. Any crumbs that find their way into the building will have been retroactively annulled by *bedikat hametz* Thursday night.

On Saturday morning, we will make our kiddush early—after Shacharit, and before the Torah service—at approximately 10 am. We will eat two small rolls in a manner that

assures there will be no crumbs left, and also have select kosher-for-Pesach treats. There will not be a full lunch.

There is a longstanding practice, going back to Rabbi Yossi in the Talmud (Pesachim 99b), of not eating matzah for one month before the Seder, so that you go into the Seder with an appetite for matzah.

Some people, in order to negate the possibility of introducing crumbs into the space, eat egg matzah instead of challah. Egg matzah does not count as matzah—it does not fulfill the mitzvah at the Seder of eating matzah—but it is also not hametz. It technically fulfills the practice of Rabbi Yossi, but personally, I think it diminishes one's appetite for matzah at the Seder. I want to go into the Seder craving matzah. We will take the risk about crumbs, being careful not to create any, in order to fulfill the charge of Rabbi Yossi.

## Selling Hametz

Because Passover begins Saturday night, and because a sale of Hametz cannot go into effect on Shabbat, all hametz selling work must be done before Shabbat. Your hametz-selling [form](#) must be delivered to me at BEKI by 5:45 pm on Wednesday, April 9. I will make the sale to a non-Jewish person on Thursday. The sale will not take effect until 8:12 pm Saturday night, so you can still use your hametz on Friday and up until the time that ownership is prohibited.

## Siyyum for the Firstborns

Because of the timing of Pesach, the Fast of the Firstborn is bumped back to Thursday, April 10. We observe this fast (and exempt firstborns from fasting) by holding a siyyum (celebration of the completion of study of a Jewish text) that morning. In order to facilitate the attendance of those who go to work, minyan that Thursday will be at 7 am, rather than 8:15 (the usual Thursday minyan time).



Passover Guide continues on **Pages 13-14**

### Passover Guide

Continued from page 12

### Candlelighting and starting the holiday

At the beginning of Shabbat, we should light our regular Shabbat candles AND a 26-hour “yahrzeit” candle. We will transfer the flame from that candle Saturday night to light the Pesach candles.

The Talmud specifies an order of blessings for *Kiddush* and *Havdalah* Saturday night—you’ll find this in your Haggadah—that can be recalled with the acronym “Yaknahaz.” (I know that it’s not the catchiest acronym ever, but it’s kind of cool that we have a 2000-year old mnemonic device that we still use.) It stands for: *Yayin, Kiddush, Ner, Havdalah, Zman*. So the blessings go: *Borei Peri Hagafen, Mekadesh Yisrael ve-hazmanim, Borei Me-orei Ha-eish, Hamavdil bein Kodesh l’Kodesh, Shehecheyanu*.

### Timing of the First Seder

The Pesach Seder is supposed to begin when it becomes night, which this year is 8:12 pm. There are some opinions that allow you to push it a bit earlier.

This year, with Shabbat preceding the holiday, I want to make a special plea for you to begin your Seder only at 8:12 pm, and to refrain from doing Seder preparations between the start of Shabbat Friday night and the end of Shabbat / beginning of Seder.

If an 8:12 Seder feels late—and you think, “oy, I don’t want to be eating at 11 pm!,” you should feel empowered to proceed through the Seder with alacrity. I expect that at my own Seder we will eat dinner at 9:30.

You should also feel empowered to serve a robust “*karpas* course.” *Karpas* is the name for the vegetables we eat at the beginning of the Seder—it’s often parsley dipped in saltwater. But truthfully, it can be any ground-based vegetable—anything that takes the blessing, “*borei peri ha-adamah*,” provided that it is not maror and provided that it does not involve matzah (so no broccoli matzah kugel).

It’s a good time for a carrot salad, an eggplant salad, potato chips, etc. This helps deal with the hunger issue. I especially recommend potato chips here.

### Pesach Services

Please see the calendar page of this bulletin. Yizkor services on the eighth day of Pesach will be Sunday, April 20, at around 10:30 am.

There will be no evening services on these dates: April 12, April 13, April 18, April 19, April 20.



**If you need a set of haggadot for your Seder, BEKI has stacks of gently used haggadot that are available to take.**

### End of the Holiday

Pesach ends at 8:21 pm on Sunday, April 20. Get your favorite apizza.

### Kitniyot

Foods that Ashkenazic Jews traditionally avoid eating on Pesach—such as rice, beans, and corn—are called kitniyot. Although many Ashkenazic Jews avoid eating them on Pesach, they are not hametz. If you are a vegetarian, even if Ashkenazic, you should consider eating kitniyot; if you are a vegan, even if Ashkenazic, you should eat kitniyot. If you find that the price of eggs this year will make it hard to get enough protein, you should consider kitniyot.

Derivatives of kitniyot, such as corn syrup, are known as mei kitniyot, and if you see kosher for Passover foods that have such derivatives (many Israeli products have them), you should feel free to eat them even if you generally avoid kitniyot. If you feel like the potential for economic stress this year leads you to want to experiment with eating kitniyot this year, but you are not sure if you really want to join the kitniyot team forever, feel free to experiment!

Passover Guide continues on **Page 14**

### Passover Guide

Continued from page 13

#### Seder Food Details

The Seder plate contains:

*Karpas*, a green, spring vegetable—parsley, asparagus, cucumber

*Maror*, a bitter lettuce, like romaine, arugula, or raw horseradish (not pickled)

*Hazeret*, a bitter lettuce or raw horseradish (whichever you didn't use for maror)

*Beitzah*, a roasted egg (hard-boil it first)

*Haroset*, a sweet, fruity mixture

*Zeroa*, a roasted item of food—a shank bone, a beet, a chicken neck. If you are serving a dairy or vegetarian seder, you should use a roasted beet, not a shank bone. Note: the shank bones packaged and sold at Stop and Shop in Amity are not kosher unless marked as kosher.

#### Ethical Eating on Passover

Certain areas of food ethics are made more complicated on Passover. A person should ethically avoid eating palm oil, unless it is fair-trade certified. Many types of kosher-for-Passover mayonnaise use palm oil. You would be Jewishly better off to eat a *kitniyot* oil (which is, anyway, *mei kitniyot*, only a *kitniyot* derivative) even if you normally avoid *kitniyot*, than to eat something unethical.

On a holiday about freedom when many of us eat many eggs, we should strive to buy eggs that are “certified humane.” These eggs are likely to contain protein spots, which are often mistaken for blood spots, causing the egg to be discarded. However, the kind of blood spot on an egg that necessitates its discarding is one that is clearly blood (see this [photo](#)) and not a protein spot.

In general, one should avoid buying and discarding lots of plastic products. Avoid making Passover a holiday when your carbon footprint dramatically increases.

## Ritual

#### Learn High Holy Day Trope

Cantor Shoshana Lash will be teaching special High Holy Day Trope classes to people who are already proficient Torah readers. Interested BEKI members should contact her directly for more information: [cantorSL@yahoo.com](mailto:cantorSL@yahoo.com)

#### Ethics and Spirituality for Stressful Times

There is a custom to study *Pirke Avot* between Passover and Shavuot to prepare for the receiving of the Torah. Join Rabbi Woodward to learn about what our sages teach about navigating stressful and confusing times. The class will meet Saturdays at 12:45 pm, after services and Kiddush lunch, on April 19, May 3, May 10, May 17, May 24, and May 31. Attend as many sessions as you would like.

#### Talmud Study

Sunday Talmud class with Rabbi Woodward meets April 6 and 27 at 10 am, following 9 am Shacharit.



Shoshana Lash

#### New Tefillah Team

BEKI's new Tefillah Team meets every Thursday at 8 pm for an hour to practice melodies for the upcoming Shabbat Shacharit. On Shabbat morning, the Team sings together with the leader, fostering an uplifting prayer atmosphere. This inspiring community effort enhances everyone's Shabbat experience.

#### Friday Evenings

Check the calendar or weekly Happenings email for the time of each week's Kabbalat Shabbat service: April 4 and 25 at 6 pm, April 11 at 7 pm, and no service April 18.

#### Minchah has returned

Our 5:45 pm service in April includes Minchah as well as Maariv.

#### Torah Reading

We encourage all people who know how to leyn or are learning how to leyn to join our rotation of Torah readers. We always need more people to help out on Shabbat morning. Torah reading is scheduled monthly based on individual availability. If you'd like to be included in the rotation, please email [sarahsilverman24@gmail.com](mailto:sarahsilverman24@gmail.com).

# April 2025

## 3 Nisan 5785 - 2 Iyar 5785

Sunday	Monday	Tuesday	Wednesday	Thursday	Friday	Saturday
		<b>1</b> 7am In-person/Zoom Service 5:45pm In-person/Zoom Service  3 Nisan	<b>2</b> 7am In-person/Zoom Service 4pm BINA 5:45pm In-person/Zoom Service 6:30pm Teen Keshet  4 Nisan	<b>3</b> 8:15am In-person/Zoom Service 5:45pm In-person/Zoom Service  5 Nisan	<b>4</b> 7am In-person/Zoom Service 6pm Kabbalat Shabbat 7:02pm Candle Lighting  6 Nisan	<b>5</b> 9:15am Shabbat Service 11am Children's Havura, K-2 Kehila, Jr. Congregation 12:45pm Artist Talk w/Judy Sirota Rosenthal  7 Nisan
<b>6</b> 9am BINA 9am In-person/Zoom Service 9am-12pm Pre-Pesach Food Drive 10am Talmud Study 3pm Kadima/USY Prince of Egypt Screening 5:45pm In-person/Zoom Service  8 Nisan	<b>7</b> 7am In-person/Zoom Service 5:45pm In-person/Zoom Service 7:30pm General Board Meeting  9 Nisan	<b>8</b> 7am In-person/Zoom Service 5:45pm In-person/Zoom Service  10 Nisan	<b>9</b> 7am In-person/Zoom Service 4pm BINA 5:45pm In-person/Zoom Service  11 Nisan	<b>10</b> 7am In-person/Zoom Service & Siyyum for bekhorot 5:45pm In-person/Zoom Service  12 Nisan	<b>11</b> 7am In-person/Zoom Service 6pm Pre-Passover Shabbat Dinner (reservations required) 7pm Kabbalat Shabbat 7:10pm Candle Lighting  13 Nisan	<b>12</b> Erev Passover 9:15am Shabbat Service 11am Children's Havura, K-2 Kehila, Jr. Congregation 8:12pm Candle Lighting  14 Nisan
<b>13</b> Passover I No BINA 9:15am Yom Tov Service No evening service 8:13pm Candle Lighting  15 Nisan	<b>14</b> Passover II Office Closed 9:15am Yom Tov Service No evening service  16 Nisan/1 L'Omer	<b>15</b> Hol Hamoed Passover I 7am In-person/Zoom Service 5:45pm In-person/Zoom Service  17 Nisan/2 L'Omer	<b>16</b> Hol Hamoed Passover II 7am In-person/Zoom Service No BINA 5:45pm In-person/Zoom Service  18 Nisan/3 L'Omer	<b>17</b> Hol Hamoed Passover III 8:15am In-person/Zoom Service 5:45pm In-person/Zoom Service  19 Nisan/4 L'Omer	<b>18</b> Hol Hamoed Passover IV 7am In-person/Zoom Service No Kabbalat Shabbat 7:18pm Candle Lighting  20 Nisan/5 L'Omer	<b>19</b> Passover VII 9:15am Shabbat & Yom Tov Service 11am Children's Havura, K-2 Kehila, Jr. Congregation 12:45pm Ethics & Spirituality for Stressful Times w/Rabbi Woodward 8:20pm Candle Lighting  21 Nisan/6 L'Omer
<b>20</b> Passover VIII (Yizkor) No BINA 9:15am Yom Tov Service No evening service 8:21pm Passover Ends  22 Nisan/7 L'Omer	<b>21</b> 7am In-person/Zoom Service 5:45pm In-person/Zoom Service  23 Nisan/8 L'Omer	<b>22</b> 7am In-person/Zoom Service 5:45pm In-person/Zoom Service  24 Nisan/9 L'Omer	<b>23</b> 7am In-person/Zoom Service 4pm BINA 5:45pm In-person/Zoom Service  25 Nisan/10 L'Omer	<b>24</b> Yom Hashoah 8:15am In-person/Zoom Service 5:45pm In-person/Zoom Service  26 Nisan/11 L'Omer	<b>25</b> 7am In-person/Zoom Service 6pm Kabbalat Shabbat 7:25pm Candle Lighting  27 Nisan/12 L'Omer	<b>26</b> 9:15am Shabbat Service 11am Children's Havura, K-2 Kehila, Jr. Congregation 12:45pm MERCAZ Shabbat Schmooze w/Emlly Levy-Shochat  28 Nisan/13 L'Omer
<b>27</b> 9am BINA 9am In-person/Zoom Service 10am Talmud Study 5:45pm In-person/Zoom Service  29 Nisan/14 L'Omer	<b>28</b> Rosh Hodesh I 7am In-person/Zoom Service 5:45pm In-person/Zoom Service 7:30pm Executive Board Meeting (off-site)  30 Nisan/15 L'Omer	<b>29</b> Rosh Hodesh II 7am In-person/Zoom Service 5:45pm In-person/Zoom Service  1 Iyar/16 L'Omer	<b>30</b> Yom Hazikaron 7am In-person/Zoom Service 4pm BINA 5:45pm In-person/Zoom Service 6:30pm Teen Keshet  2 Iyar/17 L'Omer	<div> <div> <b>Mark Your Calendar</b>  May 7  May 16  May 18  June 1  June 2-3  June 6-7-8 </div> <div> Leket speaker  Lag BaOmer  Concert for JCARR  Tikkun Leyl Shavuot  Shavuot  Elm City Kallah </div> </div>		

### Service Times

Sundays	Mondays	Tuesdays	Wednesdays	Thursdays	Fridays	Saturdays
9am Shaharit 5:45pm Minchah/Maariv	7am Shaharit 5:45pm Minchah/Maariv	7am Shaharit 5:45pm Minchah/Maariv	7 am Shaharit 5:45pm Minchah/Maariv	8:15am Shaharit 5:45pm Minchah/Maariv	7 am Shaharit Kabbalat Shabbat	9:15am Shaharit



### Advertise in the Bulletin

Would you like your ad here in the coming year? Each month, the BEKI bulletin reaches over 700 households, most of them in the New Haven area. Check with Peggy in the BEKI office about our variety of ad rates.

### Easy Fundraiser

The Stop & Shop gift cards sold by the BEKI office are debit cards for groceries or gasoline. This is an ongoing fundraiser that costs you nothing. Contact Peggy [office@beki.org](mailto:office@beki.org) to arrange pickup.

### Join BEKI on Facebook

Everyone is encouraged to join the [BEKI Facebook group](#). You'll enjoy the humor, community information, and links to cultural opportunities. You'll want to choose the private group with the stained-glass window image. Just ask to join. (The BEKI page with the hamsa is the public-facing page, which has few postings).

### E-Statements

Due to rising costs and BEKI's efforts to be more Earth-friendly, we have transitioned to e-statements and e-yahrzeits. If you prefer to receive them by paper, please contact the BEKI office at [office@beki.org](mailto:office@beki.org) or 203-389-2108 x114. The BEKI Green Team supports BEKI's movement toward paperless communications and hopes the community will also.

### Services

All services are also available on Zoom except Friday night and Saturday morning.

Sunday 9 am	Wednesday 7 am
Sunday 5:45 pm	Wednesday 5:45 pm
Monday 7 am	Thursday 8:15 am
Monday 5:45 pm	Thursday 5:45 pm
Tuesday 7 am	Friday 7 am
Tuesday 5:45 pm	Friday <b>usually 6 pm</b>
	Saturday 9:15 am

For the latest information on services, check [Happenings](#) or email [bekitefilla@gmail.com](mailto:bekitefilla@gmail.com)