



[See story, Page 8](#)

Nissan-Iyar 5783

Vol. 29 Issue 4

Message from Rabbi Woodward: Page 14

# FIRST SEDER APRIL 5

## Selling Hametz

Since owning *hametz* is prohibited on Passover, you can sell *hametz* to a non-Jew for the duration of the holiday. You can appoint Rabbi Woodward to be your agent for the sale by returning [this form](#) to the office no later than 6 pm, April 4. The *hametz* in your home should be covered so that you do not see it during Passover, and it should be organized into a specific area for sale.

Passover ends at 8:13 pm on Thursday, April 13; at that time *hametz* sold to a non-Jew will revert to your ownership.

## Maot Chittin

It's a tradition to collect "money for wheat" (donations for the poor for Passover). This year, we encourage you to send a check marked for *Maot Chittim* to the Rabbi's Tzedakah Fund. Our donations will support the Client Choice Food Pantry in The Hill section of New Haven through CCA, the organization that Rev. Bonita Grubbs directs.

## Preparation for Pesach

Cleaning for Passover is complicated! Please consult the Rabbinical Assembly Pesach preparation [guide](#) or click to download the Hadar Pesach preparation [guide](#).

Rabbi Woodward will teach a class on *Hilchot Pesach*, the Laws of Pesach— so bring your questions! – on Saturday, April 1, after services, at 12:45 pm.



Sisterhood Giftshop has Seder plates in stock.

We encourage you to donate unopened, non-perishable *hametz* at BEKI's food drive on Sunday, April 2 ([details on page 6](#)).

## Bedikat Hametz

After 7:36 pm on Tuesday, April 4, you should search for *hametz* in your house and say the "annulment of *hametz*" paragraph. The ritual of searching and annulling *hametz* is performed to bring to a close the process of cleaning your house. It's a symbolic search for *hametz* done by light of a candle that finds ten pieces of *hametz* (that you had planted before-hand) and collects them in one place.

Immediately before the search, say:

*Barukh atah Adonai Eloheinu melekh haolam, asher kid'shanu b'mitzvotav, v'tzivanu al biur hameitz.* After the search, say, "All *hametz* in my possession which I have not seen or removed, or of which I am unaware, is hereby nullified and ownerless as the dust of the earth." Set that *hametz* aside to be burned the following day.

## Leading into the Seder

Wednesday, April 5, the day leading into the Seder, begins in the morning with minyan at 7 am, followed by a *siyyum* (a celebration upon completing study of a rabbinic work) for *Taanit Bechorot*, the fast of the first-born (more about this on page 8).

One must stop eating *hametz* by 10:46 am. One must burn *hametz* and say the second "annulment of *hametz*" paragraph

Continued on **Page 3**



Treat Yourself or Someone Else.

THREE 60-MINUTE MESSAGES FOR \$271  
(\$21 savings)

The Gift Every Pregnant Person  
Wants, Needs and Appreciates.



info@thewellforwomenct.com  
(203) 390-5542  
www.thewellforwomenct.com  
495 Blake St. Suite D. New Haven, CT 06515

## BEKI Bulletin



The newsletter is published monthly by Congregation Beth El-Keser Israel for the benefit of its members.

Congregation Beth El-Keser Israel is affiliated with the United Synagogue of Conservative Judaism.

To contribute articles or for inquiries regarding membership:

- Call the Synagogue office: 203.389.2108
- Write: 85 Harrison Street, New Haven, CT 06515-1724
- Email: [bulletin@beki.org](mailto:bulletin@beki.org)

- Visit our web page: [www.beki.org](http://www.beki.org)

• Follow us on social media:  

- For advertising information, call the synagogue office.

Deadline for submission of ads or articles is the first of the month preceding publication.

Annual subscription is \$36

BEKI Bulletin © 2023 Congregation Beth El-Keser Israel.

Editor

Rachel Bashevkin

Associate Editors

Donna Levine, Donna Kemper

Layout & Design

Bruce Oren

## Board of Directors

If you have questions or concerns, please speak with a Board member.

- Rachel Bashevkin (president) [president@beki.org](mailto:president@beki.org)
- Jennifer Myer (vice-president)
- David Levy (vice-president)
- Steve Rudof (treasurer)
- Donna Levine (secretary)
- Murray Akresh
- Harold Birn

- Rachel Doft
- Eric Dunsker
- Russell Epstein
- Jonathan Freiman
- Mimi Glenn
- Michael Hurwitz
- Yaron Lew
- Sam Purdy
- Jonathan Rohner
- Tamara Schechter
- Rob Schonberger
- Jay Sokolow
- Evan Wyner



BEKI STAINED GLASS WINDOW DESIGN BY CYNTHIA BETH RUBIN



## Pesach

Continued from Page 1

by 11:50 am. In the ritual of burning *hametz*, one throws *hametz* into a fire and says, *Kol hamira vahamia d'ika vir-shuti dahaziteih udla haziteih, dahamiteih udla hamiteih, d'viarteih udla viarteih libateil v'lehevei hefkeir k'afra d'ara*, or, in English, "All *hametz* in my possession, whether I have seen it or not, whether I have removed it or not, is hereby nullified and ownerless as the dust of the earth."

## Candlelighting

For the First Seder, candlelighting is at 7:03 pm. One should try to have the first cup of wine when it is dark (7:21 pm), but if you find yourself needing to start a Seder earlier, then at least try to plan to eat the matzah when it's dark (7:21 pm).

The Second Seder is Thursday evening, April 6, with candlelighting – which should occur by transferring from a flame lit the previous day before the holiday – at 8:04 pm.

Passover ends with two days of Yom Tov. Candlelighting Tuesday evening, April 11, is at 7:09 pm and Wednesday evening, April 12, at 8:11 pm.

## Pesach Services

Please see the calendar page of this bulletin. We will have no evening service on Wednesday, April 5 or Thursday, April 6. Services on the 1<sup>st</sup> and 2<sup>nd</sup> days of Pesach, April 6 & 7, will start at 9:15 am. Yom Tov services on the 7<sup>th</sup> and 8<sup>th</sup> days of Pesach, April 12 & 13, will start at 9:15 am and 5:45 pm. Yizkor will be included on Thursday morning, April 13.

## Seder Food Details

The Seder plate contains:

*Karpas*, a green, spring vegetable – parsley, asparagus, cucumber

*Maror*, a bitter lettuce, like romaine, arugula, or raw horseradish (not pickled)

*Hazeret*, a bitter lettuce or raw horseradish (whichever you didn't use for maror)

*Beitzah*, a roasted egg (hard-boil it first)

*Haroset*, a sweet, fruity mixture

*Zeroa*, a roasted item of food – a shank bone, a beet, a chicken neck. If you are serving a dairy or vegetarian

seder, you should use a roasted beet, not a shank bone.

Note: the shank bones packaged and sold at Stop and Shop in Amity are not kosher unless marked as kosher.

## Shabbat Pesach

Shabbat begins immediately following the second day of Pesach. Rabbi Woodward will already have created an *eiruv tavshilin* for the community, so you can cook on Yom Tov for Shabbat.

## Kitniyot

Foods that Ashkenazic Jews traditionally avoid eating on Pesach, such as rice, beans, and corn, are *kitniyot*. Although many Ashkenazic Jews avoid eating them on Pesach, they are not *hametz*. If you are a vegetarian, even if Ashkenazic, you should consider eating *kitniyot*; if you are a vegan, even if Ashkenazic, you should eat *kitniyot*. Derivatives of *kitniyot*, such as corn syrup, are known as *mei kitniyot*, and if you see kosher for Passover foods that have such derivatives (many Israeli products have them), you should feel free to eat

them even if you generally avoid *kitniyot*.

## Ethical Eating on Passover

Certain areas of food ethics are made more complicated on Passover, Rabbi Woodward notes:

A person should ethically avoid eating palm oil, unless it is fair-trade certified. Many types of kosher-for-Passover mayonnaise use palm oil. You would be Jewishly better off to eat a *kitniyot* oil (which is, anyway, *mei kitniyot*, only a *kitniyot* derivative) even if you normally avoid *kitniyot*, than to eat something unethical.

On a holiday about freedom when many of us eat many eggs, we should strive to buy eggs that are "certified humane." These eggs are likely to contain protein spots, which are often mistaken for blood spots, causing the egg to be discarded. However, the kind of blood spot on an egg that necessitates its discarding is one that is clearly blood (see this [photo](#)) and not a protein spot.

We hope that you ordered fair-trade kosher-for-Passover [chocolate](#) through congregant Becky May.

In general, one should avoid buying and discarding lots of plastic products. Avoid making Passover a holiday when your carbon footprint dramatically increases.



These frog dishes for your Seder table are available at the Sisterhood Giftshop.

# APRIL PROGRAMS

## Professor Uriel Abulof

BEKI's Israel Discussion Group invites you to a talk by Uriel Abulof, Associate Professor of Politics at Tel Aviv University, on the topic "Suicidal democracy? On the moral and emotional dimensions in Israel's moment of truth." He will discuss current politics and judicial reform in Israel via [Zoom](#) on Sunday, April 9 at 10 am Eastern.

The author most recently of *The Mortality of Morality of Nations* (Cambridge University Press), Prof. Abulof studies political legitimization and violence, focusing on nationalism, revolutions and ethnic conflicts in, and beyond, the Middle East.



Uriel Abulof



## Yom HaShoah Program

On Tuesday, April 18, join us on [Zoom](#) at 7:30 pm to light a yellow candle for Holocaust Remembrance Day. Thanks to Mimi Glenn, special yellow candles will be available in the BEKI lobby during the preceding week.

BEKI's online commemoration of Yom HaShoah on April 18, after the candle lighting, will be a participatory, experiential program honoring those who perished and those who survived the Shoah. We'll share songs, poems and personal reflections. The program is sponsored by BEKI Sisterhood, but all are welcome. "Our



Mimi Glenn

goal," Shoshana Zax explains, "is to responsibly remember one of the darkest moments of Jewish history and to nurture hope that we can be part of a future where hate is extinguished."

If you are a descendant of a survivor and would like to participate, please contact [shoshanazax@gmail.com](mailto:shoshanazax@gmail.com).



Shoshana Zax

## Stop the Bleed Training

We're providing BEKI adults with free training on how to stop bleeding and thereby prevent loss of life on Sunday, April 23 from 11 am to noon (during BINA). This in-person training is **not** just for medical professionals. The one-hour program will teach how to recognize different types of injuries and then control bleeding until first responders arrive.

Everyone will be comfortably seated and then standing for the workshop. Michael Shanbrom, our Regional Security Advisor, who presented the "Countering Active Threat" Zoom program in the fall, will lead the training.

Pre-registration would be appreciated to [office@beki.org](mailto:office@beki.org). This training is made possible through the Jewish Federation of Greater New Haven.

## Counting A New Omer?

Please join Rabbi Woodward on [Zoom](#) for the conversation "Yom HaShoah and Yom HaAtzmaut: A New Omer?" on Wednesday April 26 at 7:30. The mourning practices of the Omer commemorate a plague in the second century CE. But what if a new, reinvigorated Omer commemorated the contemporary Jewish observance of the time between Yom HaShoah and Yom Ha'atzmaut? What would be involved in making this move theologically and halakhically?



Michael Shanbrom



Eric Woodward

## Jesse Mattison B'Mitzvah

The b'mitzvah of Jesse Mattison, child of Lisa Yelon and Ben Mattison, will be celebrated on Saturday, April 22, *parashat Tazriah-Metzorah*. The congregation is invited to attend. Kiddush lunch sponsored by the Yelon-Mattison family will follow. Jesse, who is a 7th grader at the Engineering Science University Magnet School, is interested in design, coding, and Tae Kwon Do. Jesse also enjoys playing TTRPGs (tabletop role-playing games) and reading voraciously.



Jesse Mattison

## Oppenheimers Leave a Legacy

“What will your Jewish legacy be?” is the question asked in the ad on page 13, which this month features the Oppenheimer family.

“This is the only shul to which Cyd and I have ever belonged,” Mark says. “We joined in time for the baby-naming of our eldest daughter over 16 years ago, and it has been our Jewish home—and, really, a home in so many more ways—ever since. It gives us a great feeling of pride to leave something in our will for BEKI (It was also much easier to do the paperwork than I had thought.), and I hope others will do it, too.”

“I think it's especially meaningful for members in their 20s, 30s, and 40s, people who don't typically think of having an ‘estate’ to do this,” he adds, “When we're gone, the shul will be here for our children.”

For information on how to make these arrangements, contact our Finance Chair, Attorney Donna Levine, at [sdsij@aol.com](mailto:sdsij@aol.com) or 203-234-9867.

And if you've included BEKI in your estate plans, please let us know.



Mark Oppenheimer

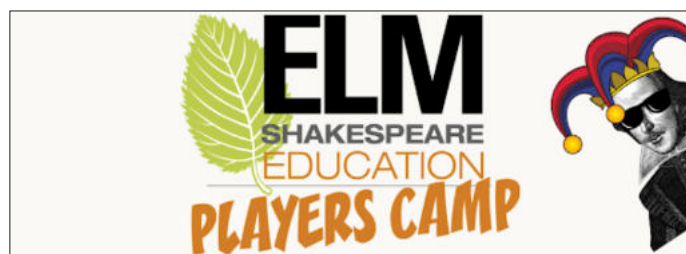
PHOTO BY LOTTA STUDIO



Donna Levine

## Honoring Graduates

We'll honor BEKI graduates on Saturday, June 10. We hope all of our graduates—middle school, high school, trade school, college, or graduate program—will participate in the service; please contact our [ritualcoordinator@beki.org](mailto:ritualcoordinator@beki.org). Parents of graduates are encouraged to check in with Rebecca Weiner at [rhweiner@sbcglobal.net](mailto:rhweiner@sbcglobal.net) about co-sponsoring the kiddush lunch.



## Day Camp Scholarship

BEKI is again hosting the Elm Shakespeare Players Camp in our downstairs space. BEKI families may sign up [here](#). As a benefit of our partnership with the Camp, two full scholarships will be provided for BEKI youth ages 7 to 12 in each ten-day session. The program runs weekdays July 10-21 and July 24-August 4, 8:30am-3pm, with after-care (if there's sufficient interest, but not included in the scholarship). If you would like a BEKI scholarship, call or email Peggy at the BEKI office.

## Can You Provide a Meal?

BEKI uses the platform Lotsa Helping Hands to support families with new babies. You can prepare and deliver the dinner or arrange delivery from a restaurant. Anything you need to know about preferences and address is provided. Just [log in](#) and choose your password. When the calendar is set up for meals, you'll receive an email with a link. If you have questions, consult [rachel.d.greenberg@gmail.com](mailto:rachel.d.greenberg@gmail.com).



Rachel Greenberg

## Mazal Tov to

Coretta and Naftali Caplan on the birth of Jonah Raphael.





### Latest Conceptual Sketches

"For, lo, the winter is past," declares the Song of Songs. Every year, spring brings Pesach and a promise of renewal. This spring also brings renewal of BEKI's sanctuary redesign project.

BEKI members can see the latest conceptual [sketches](#) for remaking our main worship space. Since the sketches are protected for security reasons, please contact [office@beki.org](mailto:office@beki.org) or [sanctuaryredesign@beki.org](mailto:sanctuaryredesign@beki.org) for a passcode.

The seating arrangement depicted is just a suggestion. The beauty of movable seats is that they can be arranged however we want, with different setups for different occasions.

Many details still need to be determined, including the exact materials and colors, the chair selection, and—crucially—beautiful artistic elements covering and surrounding the ark.

Next steps include a new round of talks with construction firms; drawing up detailed construction documents; selecting an artist to design and fabricate the decorative elements; and interim HVAC work to repair and refurbish the existing equipment.

For fundraising information, contact Murray Akresh ([makresh@aol.com](mailto:makresh@aol.com)) or John Weiser ([johnw@bwbsolutions.com](mailto:johnw@bwbsolutions.com)). Please send redesign questions and comments to [sanctuaryredesign@beki.org](mailto:sanctuaryredesign@beki.org).

## Tikkun Olam

### New JCARR Liaison Needed

JCARR, the Jewish Community Alliance for Refugee Resettlement, reports that Family 8 from Ukraine is settling in after their circuitous route from Ukraine to Spain to Canada and finally to Connecticut. They entered the U.S. under the Uniting for Ukraine program, which allows sponsored Ukrainians a path to seek asylum.

One way to support JCARR's efforts is to have direct interaction with refugee family members; another is to do tasks that are not directly involved with family members. Within the next few months, BEKI will need a new liaison

to JCARR. For more information about how you can help, contact Madeleine Kleinman at [madk117@gmail.com](mailto:madk117@gmail.com).

### Donate Your Hametz

BEKI's food collection from 9 to noon on Sunday, April 2 is a joint project of BINA, our religious school, and the Hesed Committee. We encourage you to give away unopened, non-perishable *hametz* before Pesach. Please bring your food—no glass bottles or anything past expiration—into the lobby. If you have questions, please write or call Robert Lettick at [robolettick@aol.com](mailto:robolettick@aol.com) or 203.671.4705.

# ONE HAPPY, RAUCOUS CELEBRATION

By ANNIE NORMAN-SCHIFF, EDUCATION DIRECTOR

Erev Purim at BEKI brought together young families with children and our whole community into one happy, raucous celebration.

The evening began with programming for children. They illustrated the story of Esther on paper scrolls, making their own megillot in the style of comics or graphic novels. They played Twister with hamentaschen flavors, putting their right hand on raspberry or lemon. And they listened to a Purim story read by BINA teacher Rachel Scheinerman. On the stage in the downstairs social hall, the BINA sixth grade class put on their own original play

about the Fools of Chelm—retelling some of the very silliest stories from Jewish Eastern Europe.

Finally, children and parents in costume paraded upstairs. Some families showed off impressive group costumes, like the Staums in 18th century wigs and tri-corner hats, and the Landaus as Pooh, Piglet, Tigger, and Eeyore.

More than sixty children joined the celebration over the course of the evening, enjoying the crafts, games, hamentaschen, Megillah reading, and mishloach manot to take home.

When everyone, children and adults, gathered in the sanctuary for the Megillah reading, the groggers drowning out Haman's name were thunderous.



Van Smith, Zachary Schaffer, and Jennifer Mellon at Erev Purim on March 6.

PHOTOS BY GARY HOCHMAN

Before the Megillah reading upstairs, the children had a program downstairs.



## Scholarship Opportunities

### Jewish Camp Scholarships

The website "[One Happy Camper](#)" helps families explore a variety of traditional and specialty Jewish day and overnight camps. Some camps offer need-based financial assistance, and parents are encouraged to inquire about the level of assistance available. In addition, the Jewish Foundation of Greater New Haven offers needs-blind incentive grants of up to

\$1,000 for first time campers as well as needs-based scholarships for all campers.

### Scholarships for Israel Trips

The Jewish Foundation of Greater New Haven provides Israel Experience scholarships for Teens and Young Adults. [Applications](#) for summer trips are due by Friday, April 7.

USY is offering a variety of [EPIC Israel](#) trips this summer. All partici-

pants are eligible for a RootOne Voucher subsidy in the amount of \$3,000, a gift of the Marcus Foundation.

### College Scholarships

Three different college scholarship programs—one of them needs-blind—are [available](#) through the Jewish Foundation of Greater New Haven. The deadline for all of them is May 15.



## Weekly Classes

Join Rabbi Woodward for a discussion of the week's Torah portion on Thursdays 9-9:45 am in the library, following 8:15 am minyan.

On Select Sundays from 10 to 11 am (when BINA meets), Rabbi Woodward leads in-person study of Chapter 2 Tractate Shabbat. Prior study of Jewish texts is not required.

Join Rabbi Woodward Thursdays at 7 pm on BEKI [Zoom](#) for an examination of the philosophy, theology, and history of Conservative Judaism. Readings are distributed in advance.

## Prayer and Liturgy

On Wednesday, April 19 at 7:30 pm via a special Zoom [link](#), you are invited to Prayer and Liturgy with Rabbi Carl Astor, a discussion



Carl Astor

about the language, historical context, and meaning of our prayers.

## Supporting Daily Minyan

To make sure we have a minyan consistently, please use [Minyan Maker](#). Up top, you choose which weekday service you are planning to attend (morning or afternoon). Then find your name below and choose "I'll be there." If your name does not appear on the list, just email [ritualcoordinator@beki.org](mailto:ritualcoordinator@beki.org).

## Sign up for Torah Reading

If you are able to read an aliyah of Torah or a Haftarah, make your selection via our online [spreadsheet](#). Just scroll down to the proper date to see details about each aliyah. Questions? Consult Rachel Adelstein at [ritualcoordinator@beki.org](mailto:ritualcoordinator@beki.org).



Rachel Adelstein

המקום ינחם

HaMakom Yinachem

With sorrow we note the passing of

Member **Philip Brown**, husband of Lauren

May the Almighty comfort those who mourn

## Join BEKI on Facebook

Everyone is encouraged to join the [BEKI Facebook group](#). You'll enjoy the humor, community information, and links to cultural opportunities. You'll want to choose the private group with the stained-glass window image. Just ask to join. (The BEKI page with the hamsa is the public-facing page, which has few postings).

## E-Statements

Due to rising costs and BEKI's efforts to be more Earth-friendly, we have transitioned to e-statements and e-yahrzeits. If you prefer to receive them by paper, please contact the BEKI office at [office@beki.org](mailto:office@beki.org) or 203-389-2108 x114. The BEKI Green Team supports BEKI's movement toward paperless communications and hopes the community will also.

RABBI'S  
RITUAL  
CORNER



Each month in this space, I'll brief you on — or expand on — halakhic issues around the synagogue.

## Fast of the Firstborn, Taanit Bechorot

The day before Pesach is known as the fast of the firstborn, a fast going back to the 8th or 9th century in which firstborn sons would fast because they were "passed over" on the night of the Seder and spared. The fast is first attested in Masechet Sofrim, a post-Talmudic work modeled after the Talmud. Traditionally, on the day of this fast, we have a siyyum, which is a celebration marking the end of the study of a section of rabbinic work, and which, we are told, obligates people to celebrate, exempting them from the fast.

However, you might notice that we never do a siyyum to "get out of" other fast days. The siyyum only "works" to exempt one from fasting because the fast is not a "real" obligation, dating only to this post-Talmudic work. I think the siyyum — and the fast — are actually liturgical and practical ways to commemorate another event, the sacrifice of the korban Pesach, the Passover lamb, that we would have been busy dealing with that day when the Temple stood. The siyyum practice gives us something to do, halakhically, on a day that otherwise would not be observed.



## Gallery

An exhibit by Israeli-born artist Dganit Zauberman, titled “Land in Flux,” will be on view in the BEKI Gallery from April 15 through June 14.

The artist has created a unique approach to landscape portrayal that defies the limits of the canvas on which they appear. Motivated by the effects of climate change on the land and the feelings they evoke, Zauberman says she “intuitively construct[s] a ‘place’ – a resemblance of a landscape that aims to present an idea of land that is composed of layers, both physical and emotional.”

“The physical attributes include the land’s form and texture, along with the processes by which the land forms, moves and erodes,” she explains. “Meanwhile, the paintings also represent the land as a source of emotional and psychological mood.”



**Dawn or Dusk 10x10 in. oil on board Dganit Zauberman**

Zauberman, who was raised in a kibbutz, moved to North Carolina in 1992, where she began formal art training at the University of North Carolina at Chapel Hill. After relocating to Philadelphia, she received a Bachelor of Fine Arts degree from the University of the Arts and a Master of Fine Arts degree from the Pennsylvania Academy of Fine Arts.

Since moving to New Haven in 2016 and establishing a studio at Erector Square, Zauberman has focused almost exclusively on developing her art. She has exhibited in galleries located throughout Pennsylvania, Ohio, New York, California and Connecticut, including at the Institute Library and ArtSpace in New Haven.

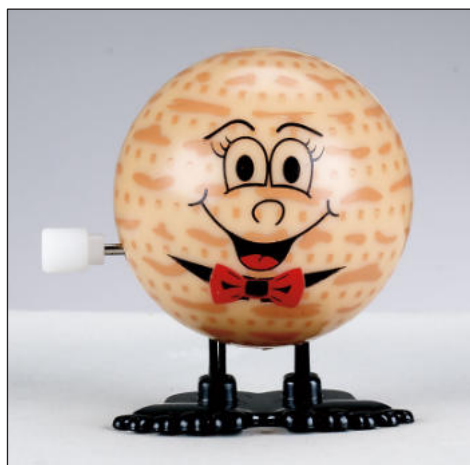
Zauberman will discuss her work on Saturday, April 29 at 12:45 pm after kiddush lunch.

## Giftshop

The Sisterhood Giftshop has everything you need for Passover. The First Seder is Wednesday April 5, but it's not too late to buy a new Seder plate. We also have beautiful frog dishes to drip 10 plagues of wine. Check out our jumping matzah balls and dancing frogs. We carry Haggadot for all ages, Passover cookbooks, and a wonderful selection of Passover story books for children.

We are continuing our Jewelry Sale, offering 25 percent off all jewelry (except Newbead Designs).

The Giftshop is open by appointment every day except Shabbat, and usually at the time of minyanim and



**The Sisterhood Giftshop has Passover toys.**

religious school. Email us at [giftshop@beki.org](mailto:giftshop@beki.org) or text Karen 203.430.2182 or Harriet

203.675.8607. Follow us on Instagram @bekijudaicagifts

### Rabbi's Tzedakah Fund

- Alexandre (Sasha) Vaxman

### Louis J. Petrillo to

- Hyla Greenberg in memory of her parents Abraham & Miriam Goldstein
- Marc & Myra Goldfarb in memory of their parents Carl (Kasreal) & Helen Chorney Goldfarb and Abraham & Miriam Goldstein
- Paul Goldenberg & Cindy Carter Goldenberg in memory of their parents Hyman & Martha Goldenberg and Roy & Flora Carter and their friend Jeff Golden
- Linda Friedman in memory of her parents Solomon Elias (Zalman Elia) Polikoff & Beatrice Lorraine (Brina Leah) Polikoff Kessler and her friend Naomi Zelnick
- Susan Fine Amatruda & Robert Amatruda in memory of their parents Leo Mayne Fine & Marcia Fine and Joseph & Sylvia Amatruda
- Bruce Forrester & Susan Amatruda Forrester in memory of their parents Joy Levin & A. Theodore Forrester and Joseph & Sylvia Amatruda

### Kiddush Fund

- The Lebowitz Family
- Harold Miller & BEKI honoring our Legacy donors
- Andrew Auerbach, Sarah Berry, Richard Kramer, Margaret Martin, Becky May, Tina Rose & Corey Stone
- Hillel & Sara-Ann Auerbach, Diana Firestone and Elan Weinstock & Sarah Silverman

### Chai/Synagogue Fund to support synagogue operations

#### To Mira & Eli Lebowitz and family with sympathy on the passing of David Raz by

- Karel Koenig
- Donna & Sid Levine (to the Ari Nathan Levine Children's Library Fund)
- Ellen Cohen & Steven Fraade
- Karen Merkel & Roy Herbst

#### To Roya Hakakian, Ramin Ahmadi & family with sympathy on the passing of Helen Bokhour by

- Donna & Sid Levine (to the Ari Nathan Levine Children's Library Fund)

#### To Laura Yakerson with sympathy on the passing of Jack Yakerson by

- Donna & Sid Levine (to the Ari Nathan Levine Children's Library Fund)
- Ellen Cohen & Steven Fraade

#### To David & Joanne Goldblum with sympathy on the passing of Maxine Goldblum by

- Donna & Sid Levine (to the Ari Nathan Levine Children's Library Fund)
- Ellen Cohen & Steven Fraade

#### To Harold Miller in honor of his 80<sup>th</sup> birthday by

- Vivian Rowe & Albee Budnitz
- David & Darryl Kuperstock
- Helene & Howard Koenig
- Jay & Margie Hirshfield

#### To Renee Drell & family with sympathy on the passing of Dr. Barry Zaret by

- Seth Pauker & Tina Rose

#### To Ron Zlotoff & Donna Kemper in honor of the birth of grandsons Noah & Jonah by

- Ellen Cohen & Steven Fraade

#### To Rachel Beaver & Max DuBoff for hosting and the BEKI community for being so welcoming by

- Jeremy Jacobson

#### To Itamar Lebowitz in honor of his Bar Mitzvah by

- Lana & Martin Gad

#### To Mick Lebowitz in honor of his Bar Mitzvah by

- Lana & Martin Gad
- Ellen Cohen & Steven Fraade

#### To Joel Grutzendler in honor of his Bar Mitzvah by

- Lana & Martin Gad

#### To Elisabeth Oppenheimer in honor of her Bat Mitzvah by

- Lana & Martin Gad

#### To Lynn Saltz in honor of her 70<sup>th</sup> birthday by

- Jessica, Kyle, Harrison & Gabby Preman

### Yahrzeit Fund to support synagogue operations

#### In Memory of:

- Sam Miller by Howard Miller
- Abraham Goldman by Martin & Judy Shore
- Pearl Brown by Steven Brown
- Morris Baer by Irving Baer
- Morris Altschuler by Roberta Atteson
- Sidney Yaffe by David Yaffe
- Irving Nabatoff by Carol Nabatoff
- A. David Nabatoff by Carol Nabatoff
- Wilbur Witten by Marvin & Susan Witten
- Rebecca Rader by Dennis Rader
- Moses Ray by Dennis Rader
- Annie Cohen by Ted Maltin
- Maurice Savin by Ronald Savin
- Marilyn Shure Savin by Ronald Savin
- Doris Cohen by Carol & Marc Weitzman
- Harriet Berman Kantrowitz & Samuel Kantrowitz by Sherry Kent
- James Barnett by Caroline Barnett
- Shirley Rudof by Joanne & Steve Rudof
- William Miller by Bobbie & Harold Miller
- Rubin Schwartz by David Schwartz
- Gertrude Slopak by David Schwartz
- His father Aaron Ignal by Alan & Toby Ignal
- Ethel Frey by Eilenn Schuman
- Her beloved husband Louis Pearlman by Harriet Pearlman
- Her beloved mother Thelma Kugell by Harriet Pearlman
- Her mother Kitty Greenberg by Toby & Alan Ignal
- His grandmother Anna Ignal by Alan & Toby Ignal
- Rose Witten by Marvin & Susan Witten
- Eunice Rogoff by Jonathan Eagan
- Jerome Rifkin by Sylvia Rifkin
- Philip Abramowitz by Marcia & John Gell
- Abraham Epstein by Kranie & Earl Baker
- Ida Brody by Fran Goldberg-Cohen & David Cohen

# STANLEY SAXE'S LEGACY

Stanley Saxe, who died in June 2022, left a legacy donation of \$10,000 to BEKI. With the check, which we received in February, his nephew Tracy Saxe sent a letter that noted, "One of Stanley's specific requests and last wishes was to make a donation to the BEKI community to continue their lifelong mission to teach and apply Jewish values and principles within the community of faith."

We hope that Stan's example will inspire you as well to arrange a legacy donation to BEKI. To discuss options of how to make those provisions in your estate planning,

consult our Finance Chair, Attorney Donna Levine, at [sdsij@aol.com](mailto:sdsij@aol.com) or 203-234-9867.

Stan, who was born in New Haven, graduated from Hillhouse High School, and attended the University of Connecticut, died at age 94. After his service in WWII and the Korean War, he joined his father in the family business, Silver Liquor Store on Chapel Street. Later in life, he became a juvenile detention officer.

Many at BEKI remember Stan fondly, and with this gift, we will continue to be reminded of him as one of our legacy donors.



MICHAEL MARTONE  
MANAGER



**Arnold's Jewelers**

DIAMONDS - WATCHES - GIFTS  
CHINA - SILVER - CRYSTAL

WATCH AND  
CLOCK REPAIRING

NORTH HAVEN SHOPPING CENTER  
NORTH HAVEN, CONN. 06473  
203-239-4291



**NEW SYLVAN CLEANERS**

*All Work Done On Premises*

Mon.-Fri. 7:00-6:00 | Sat 8:00-4:00 | Sun closed

363 Whalley Ave. New Haven, CT 06511 • 203.562.3460  
663 Orange Center Rd. Orange, CT 06477 • 203.795.0087



**ROBERT E. SHURE, INC.**

FUNERAL HOME

Dedicated to the Dignity and Respect of Tradition

543 George Street, New Haven, CT 06511

Robert E. Shure  
Founder

203-562-8244  
[shurefuneralhome.com](http://shurefuneralhome.com)

James M. Shure  
President

**RAVIT AVNI-SINGER, MSW LCSW**  
CHILD, ADOLESCENT AND ADULT PSYCHOTHERAPY  
PARENT CONSULTATION

1 BRADLEY ROAD, SUITE 906  
WOODBIDGE, CT 06525

(203) 389-9174  
BY APPOINTMENT



40 Boston Post Rd (RT 1)  
West Haven CT 06516  
203-933-2886

888 Wethersfield Ave  
Hartford CT 06114  
860-296-9799

[www.startireandwheels.com](http://www.startireandwheels.com)  
Andy & Paige Weinstein

# NOLAN'S

HAMDEN MONUMENT COMPANY

LICHTENSTEIN COMPANY

323 Washington Ave. Hamden CT 06518

(203) 288-8486

(203) 287-1593

CT toll free only (800) 852-8865

Fax (203) 287-1593

John Nolan

Michael Nolan

[nolansmonuments@att.net](mailto:nolansmonuments@att.net)

## Child and Adolescent Health Care, L.L.C.

A. Joseph Avni-Singer, M.D., FAAP

Shari Storeygard, M.D., FAAP

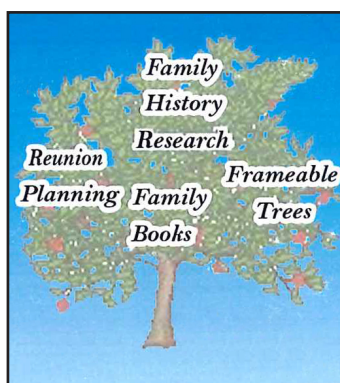
Shannon Martinello, M.D., FAAP

Miranda Bik-Yin Ip, M.D., FAAP

Namita Wijesekera, M.D., FAAP

303 WHITNEY AVENUE  
NEW HAVEN, CT 06511  
(203) 776-1243  
FAX (203) 785-1247

1 BRADLEY ROAD, SUITE 102  
WOODBIDGE, CT 06525  
(203) 397-1243  
FAX (203) 397-1241



## Many Generations

Kim Formica  
Genealogist

PO Box 1248  
Orange, CT 06477  
tel. 203/376.8551

[kimformica@optonline.com](mailto:kimformica@optonline.com)



**Challenging Minds,  
Nurturing Hearts**

## Grow with us!

Ezra Academy is a preschool through 8th grade Jewish day school offering outstanding academics and a nurturing community, rooted in the Jewish tradition of critical thinking and ethical behavior.



LEARN MORE:  
[EZRAACADEMYCT.ORG](http://EZRAACADEMYCT.ORG)  
[INFO@EZRAACADEMYCT.ORG](mailto:INFO@EZRAACADEMYCT.ORG)

SCHEDULE A TOUR:  
[EZRAACADEMYCT.ORG/VIRTUAL-TOUR](http://EZRAACADEMYCT.ORG/VIRTUAL-TOUR)



EZRA ACADEMY  
WELCOMES A WIDE  
SPECTRUM OF  
RELIGIOUS AND  
CULTRAL BELIEFS AND  
AFFILIATIONS.







*What will your Jewish legacy be?*

## Mark and Cyd Oppenheimer Created a Legacy for Their Synagogue, BEKI

*"We joined BEKI in time for the baby-naming of our eldest daughter over 16 years ago, and it has been our Jewish home—and, really, a home in so many more ways—ever since. We are proud to leave something in our will for BEKI (it was also much easier to do the paperwork than I had thought). When we're gone, the shul will be here for our children." —Mark*

For more information, contact the Jewish Foundation of Greater New Haven  
Lisa Stanger, Executive Director | (203) 387-2424, ext. 382 | [lstanger@jewishnewhaven.org](mailto:lstanger@jewishnewhaven.org)  
Tamara Schechter, Create a Jewish Legacy Manager | (203) 387-2424, ext. 325 | [tschechter@jewishnewhaven.org](mailto:tschechter@jewishnewhaven.org)



**Greenberg Rhein & Margolis Inc.**

**David B. Margolis, CIC**

1768 Litchfield Turnpike (Rte. 69)  
Woodbridge CT 06525-2309  
Tel: (203) 389-4511 • Direct (203) 907-4829  
Fax (203) 397-2266 • Cell: (203) 668-0344  
Email: [david@grminsur.com](mailto:david@grminsur.com)  
[www.grminsur.com](http://www.grminsur.com)




## Hamden Hall Country Day School

Educating students in  
PreSchool through Grade 12.

We celebrated National Mix It Up Day  
in October to foster greater respect  
and understanding among our students.

[www.hamdenhall.org](http://www.hamdenhall.org) 203.752.2610  
1108 Whitney Ave., Hamden, CT 06517



**Coachworks**  
of West Haven  
Auto Body Shop

1058 Orange Avenue • West Haven, CT 06516  
Tel: 203.932.1200 Fax: 203.932.1222  
Scott Walstedter



**BEKI'S FAVORITE  
DJ/MC ENTERTAINMENT**

**CALL CHARLES!!!  
203.795.4737**

# WHAT WE PLANT IN THE U.S., ISRAEL, AND OUR LIVES

**F**or the first time in several years, I'm planting a garden. I built a raised bed; I made compost over the winter; I took lead tests for the soil (all clear!); and what's next is filling the bed with soil and planting.

I don't know what will get stolen by squirrels and birds, but if I can grow some herbs, some peppers, some lettuces, I'll be thrilled.

But that's the thing about planting: we don't know how what we plant will turn out. And that's why Pesach is in the spring.

Pesach is the holiday of freedom — of release from bondage. It's a celebration of the completion of winter — a winter that began at the end of Sukkot (Shmini Atzeret, really) and ends at the beginning of Pesach. We are free to go forth, but the challenge is that we don't really know what will happen when we go out. Freedom is scary.

We encounter freedom as we grow up — whether it is experiences of independence from going on a first walk without our family, or experiences of travel, or of changes in our life. We experience freedom many times. The hallmark of freedom is its openness — if it weren't open to both good and bad possibilities, it wouldn't really be freedom; it would be another set path.



**Eric Woodward**

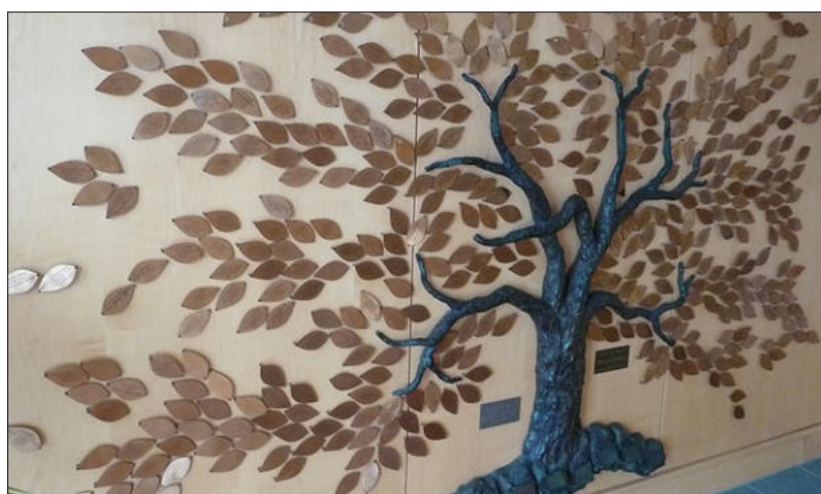
We know this in our own personal lives, and today we are encountering it in the political world. We are seeing that the United States and Israel are both facing crises of freedom, namely, that being able to make one's own national choices in the world is scary, and without promise of success. That's why we pray for these countries on Shabbat. We pray that they navigate freedom with peace and success.

Watching the news now makes me worry about Israeli society, and I can't write any simple platitude, that all will be well.

But what I can do is remind us that freedom is a process — that the work of finding one's way through the desert of independence, finding one's way after liberation from Egypt, is constant work.

And so here, facing the dilemma of stepping forward, I want to return to the metaphor of the harvest. What are we planting? We cannot control what springs from the ground, but we can design what seeds we sow, what the soil is like, when we plan to harvest. We can exert some control.

This spring, ensure that what you are planting — whether with regard to Israel, America, or your own life — is what you truly intend to plant. Think of what you are growing. Think of what you want to do with your freedom. And plan to grow only that.



## Tree of Life Awaits Your Leaf

The Tree of Life at the entrance to BEKI is a collection of golden leaves that honor people and moments in our lives. For \$118 you can add a leaf. Contact Marjorie Wiener at 203.387.6278 or [marjoriowiener@yahoo.com](mailto:marjoriowiener@yahoo.com)



# April 2023

## 10 Nisan 5783 - 9 Iyar 5783

Sunday

Monday

Tuesday

Wednesday

Thursday

Friday

Saturday

### Mark Your Calendar

**May 8** Erev Lag BaOmer  
**May 25** Erev Shavuot  
**June 3** Samuel Aaron Werlin b'mitzvah  
**June 10** Graduates' Shabbat  
**June 14** BEKI Annual Meeting  
**June 17** Pride Shabbat

**1**  
 9:15am Shabbat Service (Sanctuary, in-person)  
 11am Children's Havura, K-2 Kehila, Jr. Congregation  
 12:45pm Shabbat Schmooze w/Rabbi Woodward "Laws of Pesach"  
 10 Nisan

<b>2</b> 9am BINA 9am-12pm BINA Pre-Pesach Food Drive 9am In-person & Zoom Service 10am Talmud Class (in-person) 5:45pm In-person & Zoom Service 11 Nisan	<b>3</b> 7am In-person & Zoom Service 5:45pm In-person & Zoom Service 12 Nisan	<b>4</b> 7am In-person & Zoom Service 5:45pm In-person & Zoom Service 6pm Deadline for Sale of Hametz 13 Nisan	<b>5</b> <b>Erev Passover</b> Taanit Bechorot, the fast of the first-born First Seder 7am In-person & Zoom Service No BINA No evening service 7:03pm Candle Lighting 14 Nisan	<b>6</b> <b>Passover I</b> Office Closed 9:15am Shacharit, Hallel, Musaf (Sanctuary, in-person) No evening service 8:04pm Candle Lighting 15 Nisan	<b>7</b> <b>Passover II</b> Office Closed 9:15am Shacharit, Hallel, Musaf (Sanctuary, in-person) 6pm First Friday Kabbalat Shabbat 7:05pm Candle Lighting 16 Nisan/1 L'Omer	<b>8</b> <b>Hol Hamoed Passover I</b> 9:15am Shabbat Service (Sanctuary, in-person) 11am Children's Havura, K-2 Kehila, Jr. Congregation 17 Nisan/2 L'Omer
<b>9</b> <b>Hol Hamoed Passover II</b> No BINA 9am In-person & Zoom Service 10am Israel Discussion w/Uriel Abulof (Zoom) 5:45pm In-person & Zoom Service 18 Nisan/3 L'Omer	<b>10</b> <b>Hol Hamoed Passover III</b> 7am In-person & Zoom Service 5:45pm In-person & Zoom Service 19 Nisan/4 L'Omer	<b>11</b> <b>Hol Hamoed Passover IV</b> 7am In-person & Zoom Service 5:45pm In-person & Zoom Service 7:09pm Candle Lighting 20 Nisan/5 L'Omer	<b>12</b> <b>Passover VII</b> Office Closed 9:15am Shacharit, Hallel, Musaf (Sanctuary, in-person) No BINA 5:45pm In-person Service 8:11pm Candle Lighting 21 Nisan/6 L'Omer	<b>13</b> <b>Passover VIII (Yizkor)</b> Office Closed 9:15am Shacharit, Hallel, Yizkor, Musaf (Sanctuary, in-person) 5:45pm In-person Service 22 Nisan/7 L'Omer	<b>14</b> 7am In-person & Zoom Service 6pm Kabbalat Shabbat 7:12pm Candle Lighting 23 Nisan/8 L'Omer	<b>15</b> 9:15am Shabbat Service (Sanctuary, in-person) 11am Children's Havura, K-2 Kehila, Jr. Congregation 24 Nisan/9 L'Omer
<b>16</b> 9am BINA 9am In-person & Zoom Service 10am Talmud Class (in-person) 5:45pm In-person & Zoom Service 25 Nisan/10 L'Omer	<b>17</b> 7am In-person & Zoom Service 5:45pm In-person & Zoom Service 7:30pm Executive Board Meeting (on-line) 26 Nisan/11 L'Omer	<b>18</b> <b>Yom Hashoah</b> 7am In-person & Zoom Service 5:45pm In-person & Zoom Service 7:30pm Yom Hashoah Program (Zoom) 27 Nisan/12 L'Omer	<b>19</b> 7am In-person & Zoom Service 4pm BINA 5:45pm In-person & Zoom Service 7:30pm Prayer & Liturgy at BEKI w/Rabbi Carl Astor (special Zoom link) 28 Nisan/13 L'Omer	<b>20</b> 8:15am In-person & Zoom Service 9am Talmud Study 5:45pm In-person & Zoom Service 6pm Teen Keshet Grades 7-9 29 Nisan/14 L'Omer	<b>21</b> <b>Rosh Hodesh I</b> 7am In-person & Zoom Service 6pm Kabbalat Shabbat 7:20pm Candle Lighting 30 Nisan/15 L'Omer	<b>22</b> <b>Rosh Hodesh II</b> Jesse Mattison B'Mitzvah 9:15am Shabbat Service (Sanctuary, in-person) 11am Children's Havura, K-2 Kehila, Jr. Congregation 1 Iyar/16 L'Omer
<b>23</b> 9am BINA 9am In-person & Zoom Service 10am Talmud Class (in-person) 11am Stop the Bleed Training (in-person) 5:45pm In-person & Zoom Service 2 Iyar/17 L'Omer	<b>24</b> 7am In-person & Zoom Service 5:45pm In-person & Zoom Service 3 Iyar/18 L'Omer	<b>25</b> <b>Yom Hazikaron</b> 7am In-person & Zoom Service 5:45pm In-person & Zoom Service 4 Iyar/19 L'Omer	<b>26</b> <b>Yom Ha'Atzmaut</b> 7am In-person & Zoom Service 4pm BINA 5:45pm In-person & Zoom Service 7:30pm Yom Hashoah & Yom Ha'atzmaut: A New Omer? (Zoom) 5 Iyar/20 L'Omer	<b>27</b> 8:15am In-person & Zoom Service 9am Torah Study 5:45pm In-person & Zoom Service 6 Iyar/21 L'Omer	<b>28</b> 7am In-person & Zoom Service 6pm Kabbalat Shabbat 7:27pm Candle Lighting 7 Iyar/22 L'Omer	<b>29</b> 9:15am Shabbat Service (Sanctuary, in-person) 11am Children's Havura, K-2 Kehila, Jr. Congregation 12:45pm Artist Talk w/Dganit Zauberman 8 Iyar/23 L'Omer
<b>30</b> 9am BINA 9am In-person & Zoom Service 5:45pm In-person & Zoom Service 9 Iyar/24 L'Omer						

## BEKI Events

### Service Times

Sundays	Mondays	Tuesdays	Wednesdays	Thursdays	Fridays	Saturdays
9am Shaharit 5:45pm Maariv	7am Shaharit 5:45pm Maariv	7am Shaharit 5:45pm Maariv	7 am Shaharit 5:45pm Maariv	8:15am Shaharit 5:45pm Maariv	7 am Shaharit 6 pm Kabbalat Shabbat	9:15am Shaharit



DATED

Non-Profit Organization  
U.S. Postage  
P A I D  
Permit #131  
New Haven, CT

### Donate Online

Fast and easy at  
[www.beki.org/give](http://www.beki.org/give)

### Advertise in the Bulletin

Would you like your ad here in the coming year? Each month, the BEKI bulletin reaches over 700 households, most of them in the New Haven area. Check with Peggy in the BEKI office about our variety of ad rates.

### Easy Fundraiser

The Stop & Shop gift cards sold by the BEKI office are debit cards for groceries or gasoline. This is an ongoing fundraiser that costs you nothing. Contact Peggy [office@beki.org](mailto:office@beki.org) to arrange pickup.

### Services

All services are also available on Zoom except Friday night and Saturday morning.

Sunday 9 am	Wednesday 7 am
Sunday 5:45 pm	Wednesday 5:45 pm
Monday 7 am	Thursday 8:15 am
Monday 5:45 pm	Thursday 5:45 pm
Tuesday 7 am	Friday 7 am
Tuesday 5:45 pm	Friday 6 pm
	Saturday 9:15 am

For the latest information on services, check [Happenings](#) or email [bekitefilla@gmail.com](mailto:bekitefilla@gmail.com)

