



JANUARY EVENTS

Weekly Zoom Havdalah

Online Havdalah resumes in January and February. Every Saturday night on [Zoom](#), we'll sing the blessings along with Rabbi Eric, reflect on our week, and read a story with Education Director Annie Norman-Schiff. Adults can stay on to chat afterwards. Check the calendar for the time each week.

Author Liana Finck

The author of *Let There Be Light: The Real Story of Her Creation* will speak at BEKI Sunday, Jan. 8 at noon, an event sponsored by the BEKI Sisterhood and Giftshop. In this graphic novel, which the *The New Yorker* listed as one of the best books of 2022, Liana Finck reimagines the story of Creation with God as a woman. Signed copies will be available for purchase. Light refreshments will be available. Everyone is asked to RSVP to giftshop@beki.org.



Liana Finck

Prayer and Liturgy

On the third Wednesday of the month, which is Jan. 18, you are invited to Prayer and Liturgy at BEKI with Rabbi Carl Astor. The focus of the group, which meets at 7:30 pm via a special Zoom [link](#), is to better understand the language, the historical context, and the spiritual meaning of our prayers and liturgy. We'll be joined this month by members of Kehilat Kol HaNeshama in Sarasota, Fla.

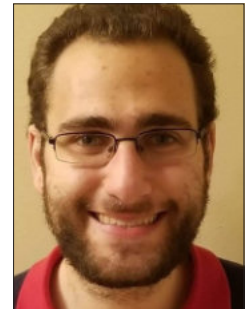
New Shabbat Melodies

Come learn new melodies for Shabbat morning davening on Wednesday, Jan. 11 from 7:30 to 8:30 pm in the BEKI library. Some of our regular leaders will teach favorite tunes,

so that we can sing them with more confidence and spiritual connection during our Saturday morning services. We'll take some time to delve into each tune. Contact **Rachel Adelstein** Max DuBoff at duboff.max@gmail.com or Rachel Adelstein at ritualcoordinator@beki.org with any questions.



Rachel Adelstein



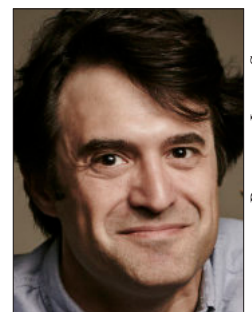
Max DuBoff

New Haven Beit Midrash

"Le'avdah Ule'shamrah: The Jewish Obligation to Repair and Restore" is the theme for this second New Haven Beit Midrash, to be held at Congregation B'nai Jacob on Thursday, Jan. 26 from 7 to 9 pm. The command to work and protect the Garden of Eden serves a call to all of Adam and Eve's descendants to protect God's creations even as we benefit from them.

Sunday Brunch and Learn

Mark Oppenheimer will speak on Sunday, Jan. 29 about his recent project, called *Gatecrashers: The Hidden History of Jews in the Ivy League*, an eight-part podcast series about how Jews fought for acceptance at each of the eight Ivy League schools and how the Jewish experience in these elite schools shaped American higher education. Join us for this (free) Brunch and Learn, starting at 9:45 am, after minyan.



Mark Oppenheimer



Treat Yourself or Someone Else.

THREE 60-MINUTE MESSAGES FOR \$271
(\$21 savings)

The Gift Every Pregnant Person
Wants, Needs and Appreciates.



info@thewellforwomenct.com
(203) 390-5542
www.thewellforwomenct.com
495 Blake St. Suite D. New Haven, CT 06515

BEKI Bulletin



The newsletter is published monthly by Congregation Beth El-Keser Israel for the benefit of its members.

Congregation Beth El-Keser Israel is affiliated with the United Synagogue of Conservative Judaism.

To contribute articles or for inquiries regarding membership:

- Call the Synagogue office: 203.389.2108
- Write: 85 Harrison Street, New Haven, CT 06515-1724
- Email: bulletin@beki.org

- Visit our web page: www.beki.org

• Follow us on social media:  

- For advertising information, call the synagogue office.

Deadline for submission of ads or articles is the first of the month preceding publication.

Annual subscription is \$36

BEKI Bulletin © 2023 Congregation Beth El-Keser Israel.

Editor

Rachel Bashevkin

Associate Editors

Donna Levine, Donna Kemper

Layout & Design

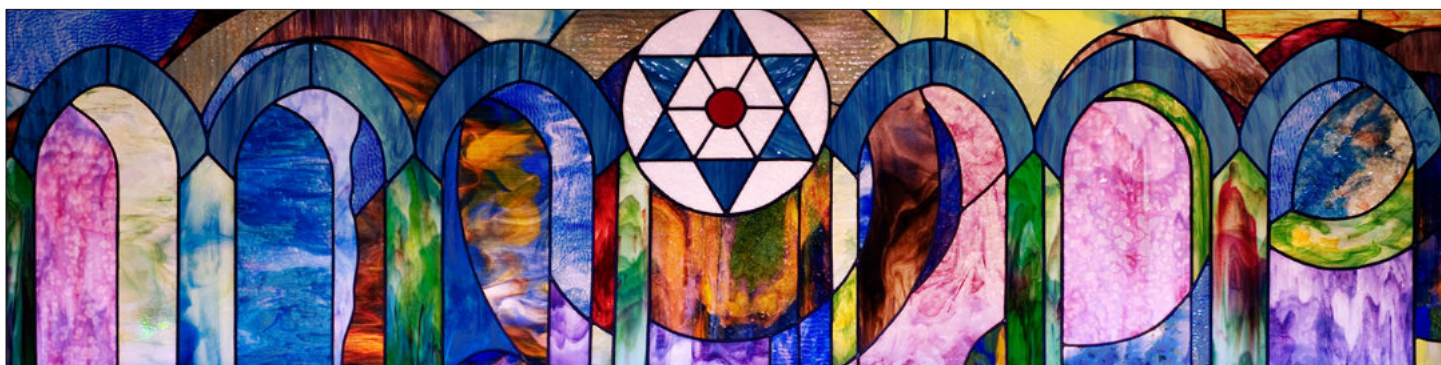
Alice Kosowsky, Bruce Oren

Board of Directors

If you have questions or concerns, please speak with a Board member.

- Rachel Bashevkin (president) president@beki.org
- Jennifer Myer (vice-president)
- David Levy (vice-president)
- Steve Rudof (treasurer)
- Donna Levine (secretary)
- Murray Akresh
- Harold Birn

- Rachel Doft
- Eric Dunsker
- Russell Epstein
- Jonathan Freiman
- Mimi Glenn
- Michael Hurwitz
- Yaron Lew
- Sam Purdy
- Jonathan Rohner
- Tamara Schechter
- Rob Schonberger
- Jay Sokolow
- Evan Wyner



BEKI STAINED GLASS WINDOW DESIGN BY CYNTHIA BETH RUBIN

Learn to Read Torah

By popular demand, BEKI is offering another session of “Learn to Leyn,” a beginners’ Torah trope course with Cantor Shoshana Lash, from Jan. 11 to Feb. 22. This will be a free, one hour, in-person class each Wednesday at 6:10 pm. For more information and to register: cantorSL@yahoo.com.



Shoshana Lash

Mazal Tov to

- Grandparent Susie Voigt, parents Clararose Voigt and John Schott, and big sibling Simone Petra on the birth of Julian Philip in Oakland, CA
- Grandparent Susie Voigt, parents Jane Coffee and Carlos Eyzaguirre, and big siblings Edith and Lucia, on the birth Pablo Coffee Eyzaguirre
- Parents Mary and Dan Korey on the birth of James Theodore Korey
- Parents Arielle and Rabbi Jason Rubenstein, and big siblings Raphael and Elijah, on the birth of Chava Reut

Making a Minyan and Torah Reading

To make sure we have a minyan consistently, please, if you can, tell Rachel Wiseman Gerber wisemangerber@gmail.com when you can make an ongoing commitment to a weekday service. Or just make a choice each week: Log in at [Minyan Maker](#).

Up top, you choose which weekday service you are planning to attend (morning or afternoon). Then find your

name below and choose “I’ll be there.”

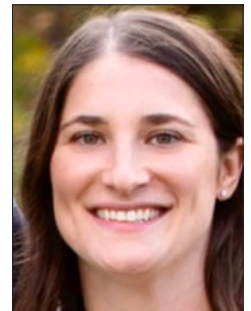
If you are able to read an aliyah of Torah, make your selection via our online [spreadsheet](#). Just scroll down to the proper date to see details about each aliyah. If you have questions, please consult Rachel Adelstein at ritualcoordinator@beki.org.

Thanks to everyone who helps make BEKI services strong.

Can You Provide a Meal?

BEKI uses the platform Lotsa Helping Hands to support families with new babies. You can prepare and deliver the dinner or arrange delivery from a restaurant.

Anything you need to know—how many people to feed; vegetarian, kashrut or allergy specifications; address and time for delivery—is provided. Just [log in](#) and choose your password. When a new baby arrives in our community, you’ll receive an email with a link to Lotsa Helping Hands. If you have questions, consult rachel.d.greenberg@gmail.com.



Rachel Greenberg

Shalach Manot – Purim Bags

Be sure to reply about Shalach Manot by Wednesday, March 1. The order form is [here](#) at the website. You can pay by check or by [credit card](#). Whether or not you pick up a bag, you’ll receive your Purim card with your donor list. Bags can be picked up after the Megillah readings March 6 and 7 or by arrangement with the office later that week.

Advertise Your Business in the Bulletin

Would you like your ad here in the coming year? Each month, the BEKI bulletin reaches over 700 households, most of them in the New Haven area. Check with Peggy in the BEKI office about our variety of ad rates.

Easy Fundraiser

The Stop & Shop gift cards sold by the BEKI office are debit cards for groceries or gasoline. This is an ongoing fundraiser that costs you nothing. Contact Peggy office@beki.org to arrange pickup.

Amazon Smile

Sign up on Amazon to donate 0.5 percent of each of your Amazon orders to BEKI. It costs you nothing and happens automatically with each order.

המקום ינחם

HaMakom Yinachem

With sorrow we note the passing of
Joseph Winter, father of Michael Winter
(& Ellen Mackler)

May the Almighty comfort those who mourn

REDESIGN MOVES FORWARD

The Sanctuary Redesign Committee, chaired by Carole Bass and John Weiser, is working hard to deliver the congregation's top priorities for our main worship space.

Soaring costs are forcing a significant reduction in the scope of the project. The committee is focused on making the sanctuary more functional, comfortable, and accessible. Aesthetic improvements will have to be more modest than originally proposed.

Top priorities, as expressed in a 2021 congregational survey, include accessibility, more natural light, a flexible seating arrangement, better acoustics, improved climate control and air quality, and an environment conducive to BEKI's style of participatory, member-led communal prayer.

Along with our architect, the Sanctuary Redesign Committee is working with revised cost estimates furnished by several construction firms. We are squeezing the costs as hard as we can without sacrificing quality and durability of materials. We hope that the revised project will include:

- A new, fully accessible bimah and ark
- Movable chairs that can accommodate multiple seating arrangements
- Better light, both natural and artificial
- HVAC improvements
- Energy-efficient windows
- An improved sound system
- A new movable wall to replace the battered accordion

wall between the sanctuary and the social hall.

HVAC work is a high priority. The redesign originally called for two sets of improvements: refurbishing the existing equipment and adding ductwork for better air distribution. We are now planning to do the repair and

refurbishment before the rest of the sanctuary project.

Our architect, Michael Goldblum of Building Studio Architects, is working on a new design for the ark, bimah, and front of the sanctuary. After the committee approves a design, we will repeat last year's process of getting cost estimates from construction firms. When we have a revised design that fits within the budget, the committee will present it to the congregation in a Zoom meeting.

A fundraising team, which is separate from the Sanctuary Redesign Committee, previously announced donations and pledges of slightly over

\$600,000. The fundraising team paused its work during BEKI's annual appeal in the fall. In January, the fundraising team will renew its efforts to close the gap between the amount raised so far and the \$1.25 million budget.

The Sanctuary Redesign Committee will continue to update the congregation and synagogue leaders as plans move forward. In the meantime, please don't hesitate to contact us at sanctuaryredesign@beki.org.



The original BEKI bimah, decorated for an event in 1960.

TEENS MAKE 136 PIES

The teens of BEKI USY were back in the kitchen this fall, preparing kosher pareve pies for their annual Tikkun Olam fundraiser. This project betters our community in two ways: When BEKI members purchase pies for their own Thanksgiving tables, the profits are donated to tzedakah. And when BEKI members sponsor pies for donation, those pies are given to families in need.

This year, nine teens did the hard (but extremely fun) work of assembling 136 pumpkin and apple pies. Sixty-five of those pies were donated to the Downtown Evening Soup Kitchen's pantry program, where families in need

could pick up everything to fill their Thanksgiving tables.

Thank you to everyone who purchased pies for themselves and for DESK, supporting this wonderful project.

We extend a special thank you to Eva Shragis, who organized this fundraiser for the final time this year after many years of service. She is now handing over the reins. If you're interested in learning our secret pumpkin pie recipe and helping next year, contact USY parent Chaya Moskowitz at csnepm225@yahoo.com or Annie Norman-Schiff at anormanschiff@beki.org.



USY teens Reuben Colten-Berry, Hannah Klein-Berger and Teya Klein-Berger make pumpkin pies in the BEKI kitchen.

Tikkun Olam

JCARR Update

JCARR, the Jewish Community Alliance for Refugee Resettlement, which has welcomed seven families from five different countries in seven years, is now resettling our eighth family, from Ukraine.

Rabbi Michael Farbman of Temple Emanuel met this family in August in Barcelona, Spain. Now that they have made their way to Connecticut, JCARR is springing into

action to help provide a 'softer landing' as they take their first steps in their new life.

JCARR is committed to helping them to find housing, furnish and supply their home, enroll in school and ESL programs, secure necessary medical care, apply for social services, get jobs, and obtain pro bono immigration legal assistance. Contact Madeleine Kleinman at madk117@gmail.com to find out how you can participate in this effort.

Contributions

Kiddush Fund

- The Sanchez-Moycik Family
- The Oppenheimer Family
- Barbara & Murray Akresh
- Katharine Baker & Eric Woodward

Chai/Synagogue Fund

to support synagogue operations

To Natalya Moycik in honor of her B'Mitzvah by

- Ellen Cohen & Steven Fraade

To Klara Oppenheimer in honor of her B'Mitzvah by

- Ellen Cohen & Steven Fraade

To Rachel Sutin & Family with sympathy on the passing of Ruth Froimowicz by

- Steve & Sherry Rothman & family

Yahrzeit Fund

to support synagogue operations

In Memory of:

- Jack Frankel by Stewart Frankel & Joy Kaufman
- Robert Zlotoff by Ron Zlotoff & Donna Kemper
- Samuel Snyder by Robert Snyder
- Lester P. Isenberg by Janis Isenberg
- Carl Hoberman by Judy Hoberman & Dominic Kinsley
- Harry Goldberg by Eileen Schuman
- Chana Rosmarin by Jessey Palumbo
- Fred M. Shure by Betsy Shure Gross, Gary Gross & family

- Her Grandfather Joseph Schwartz by Joan Gelbert
- Hyman Fleischner by Sara-Ann & Hillel Auerbach
- Bernice Auerbach by Hillel & Sara-Ann Auerbach
- Mary Epstein by Kranie & Earl Baker
- Jacob Ripkin by Jeri Ripkin
- Morris Feldman by Lois K. Feldman
- Isaac Press by Jeff & Lynne Heisner and Joyce & David Popowski
- Elsie Hodes by Jeff & Lynne Heisner and Joyce & David Popowski
- Harold Rogovin by Ted Maltin
- Her dear grandmother Yetta Gray by Toby & Alan Ignal

News

YOUTH CHOIR BRINGS JOY



ALLEN SAMUEL PHOTOGRAPHY

BEKI's Youth Choir perform on March 27, 2022, at Rabbi Woodward's installation.

When Rachel Light thought of having the children of BEKI sing something at Rabbi Woodward's installation back in March, she didn't realize she was launching a youth choir. She recruited fellow parent Joshua Perry to help, and they taught 15 children some songs.

When the choir was invited to be the opening act for the Connecticut Z'mirah's Hanukkah concert in December, Light asked the children if they were interested. "They were jumping up and down," she said, telling her, "Yes, of course we want to do it!"

Since Sunday rehearsals are just 40 minutes long, Perry records each song for the children to practice at home. Perry thinks of the choir as part of building a joyful, fun synagogue community where young people want to be.

Currently 12 students, the choir has no auditions and allows children to join at any time. Ranging in age from 5 to 13, the older members often mentor the younger ones.

Miriam Purdy, one of the younger members of the choir, agreed. "It's very fun and very cool to be in the choir because there's big kids and little kids," she said.

MICHAEL MARTONE
MANAGER



Arnold's Jewelers

DIAMONDS - WATCHES - GIFTS
CHINA - SILVER - CRYSTAL

WATCH AND
CLOCK REPAIRING

NORTH HAVEN SHOPPING CENTER
NORTH HAVEN, CONN. 06473
203-239-4291



NEW SYLVAN CLEANERS

All Work Done On Premises

Mon.-Fri. 7:00-6:00 | Sat 8:00-4:00 | Sun closed

363 Whalley Ave. New Haven, CT 06511 • 203.562.3460
663 Orange Center Rd. Orange, CT 06477 • 203.795.0087



ROBERT E. SHURE, INC.

FUNERAL HOME

Dedicated to the Dignity and Respect of Tradition

543 George Street, New Haven, CT 06511

Robert E. Shure
Founder

203-562-8244
shurefuneralhome.com

James M. Shure
President

RAVIT AVNI-SINGER, MSW LCSW
CHILD, ADOLESCENT AND ADULT PSYCHOTHERAPY
PARENT CONSULTATION

1 BRADLEY ROAD, SUITE 906
WOODBIDGE, CT 06525

(203) 389-9174
BY APPOINTMENT



40 Boston Post Rd (RT 1)
West Haven CT 06516
203-933-2886

888 Wethersfield Ave
Hartford CT 06114
860-296-9799

www.startireandwheels.com
Andy & Paige Weinstein

NOLAN'S

HAMDEN MONUMENT COMPANY

LICHTENSTEIN COMPANY

323 Washington Ave. Hamden CT 06518

(203) 288-8486

(203) 287-1593

CT toll free only (800) 852-8865

Fax (203) 287-1593

John Nolan

Michael Nolan

nolansmonuments@att.net

Child and Adolescent Health Care, L.L.C.

A. Joseph Avni-Singer, M.D., FAAP

Shari Storeygard, M.D., FAAP

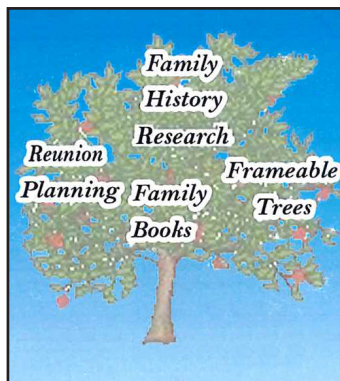
Shannon Martinello, M.D., FAAP

Miranda Bik-Yin Ip, M.D., FAAP

Namita Wijesekera, M.D., FAAP

303 WHITNEY AVENUE
NEW HAVEN, CT 06511
(203) 776-1243
FAX (203) 785-1247

1 BRADLEY ROAD, SUITE 102
WOODBIDGE, CT 06525
(203) 397-1243
FAX (203) 397-1241



Many Generations

Kim Formica
Genealogist

PO Box 1248
Orange, CT 06477
tel. 203/376.8551

kimformica@optonline.net



**Challenging Minds,
Nurturing Hearts**

Grow with us!

Ezra Academy is a preschool through 8th grade Jewish day school offering outstanding academics and a nurturing community, rooted in the Jewish tradition of critical thinking and ethical behavior.



LEARN MORE:
EZRAACADEMYCT.ORG
INFO@EZRAACADEMYCT.ORG

SCHEDULE A TOUR:
EZRAACADEMYCT.ORG/VIRTUAL-TOUR



EZRA ACADEMY
WELCOMES A WIDE
SPECTRUM OF
RELIGIOUS AND
CULTRAL BELIEFS AND
AFFILIATIONS.



What will your Jewish Legacy be?



The Birn Family created a legacy for their synagogue, Congregation BEKI

"The synagogues of my youth do not exist anymore. I made a legacy commitment to BEKI to make sure that our family and future generations never have to say that. The BEKI community has supported us spiritually, intellectually, educationally and socially - it is our privilege to be able to support it back now and in the future,"—Harold Birn



Jewish Foundation
OF GREATER NEW HAVEN

newhavenjewishfoundation.org



jewishlegacynewhaven.org

For more information about Create A Jewish Legacy, contact Lisa Stanger,
(203) 387-2424 x382, lstanger@jewishnewhaven.org



Greenberg Rhein & Margolis Inc.

David B. Margolis, CIC

1768 Litchfield Turnpike (Rte. 69)

Woodbridge CT 06525-2309

Tel: (203) 389-4511 • Direct (203) 907-4829

Fax (203) 397-2266 • Cell: (203) 668-0344

Email: david@grminsurace.com

www.grminsurace.com



**Hamden Hall
Country Day School**

Educating students in
PreSchool through Grade 12.

We celebrated National Mix It Up Day
in October to foster greater respect
and understanding among our students.

www.hamdenhall.org 203.752.2610
1108 Whitney Ave., Hamden, CT 06517

Coachworks
of West Haven
Auto Body Shop

1058 Orange Avenue • West Haven, CT 06516

Tel: 203.932.1200 Fax: 203.932.1222

Scott Walstedter

**BEKI'S FAVORITE
DJ/MC ENTERTAINMENT**

**CALL CHARLES!!!
203.795.4737**

A CHANCE FOR SOMETHING POSITIVE

What would be a good photo of our minyan? When I was an editor on my high school newspaper, I remember wanting “action photos.” Get a picture of a club doing something — not just standing against a wall. Get a picture of people playing a sport — not just holding a trophy.

How do you take a photo of minyan?

You could take a photo of a person putting on tallit and tefillin, connecting to these ritual garments.

You could take a photo of the sunrise over the trees in the BEKI parking lot, the view many of us are transfixed by in the mornings.

You could take a photo of people talking and joking with each other, another perk of coming to minyan.

But what you wouldn't take a photo of is just the [MinyanMaker](#) app, important as it is.

For many of us, we have externalized minyan. We get text messages and phone calls about it (which is vital work that Rachel Wiseman Gerber does), but those, or abstract calls to attend, are often the closest we get to it.

Too often, our “action photo” of minyan is a screenshot of our phone. We see minyan as another obligation that we wish we could do, but not as a chance for something positive.

But the reality is, when you go to minyan, there's a lot that's really positive there — it doesn't feel like doing your homework. It's beautiful to see the sunrise, or to have some moments to yourself at the end of the day. It's meaningful to put on a tallit and say the Shema. It's fun to schmooze with people.

I don't believe in guilt-tripping people into coming to things — we all have more obligations than we have time for, and you should not feel bad if other obligations get in the way of minyan. Nor do I believe in scaring people — true, minyan doesn't happen without you, but fear is not a good motivator.

What I believe in is telling people how wonderful minyan is. Come at 7 am Monday, Tuesday, Wednesday, Friday, or 8:15 on Thursday, or 9 am on Sunday; or come at 5:45 pm on Sunday-through-Thursday, 6 pm (Shabbat!) on Friday.

And start reminding yourself about the good “action photos” of minyan — the things that make it worth doing.



ALLEN SAMUEL PHOTOGRAPHY

Morning minyan meets before Rabbi Woodward's installation on March 27.

8 Tevet 5783 - 9 Shevat 5783

1 8 Tevet	2 Office Closed 9:00am In-person & Zoom Service (Federal Holiday Service Time) 5:45pm In-person & Zoom Service 9 Tevet	3 Fast of Tevet 10 7:00am In-person & Zoom Service 5:45pm In-person & Zoom Service 10 Tevet	4 7:00am In-person & Zoom Service 4:00pm BINA 5:45pm In-person & Zoom Service 11 Tevet	5 8:15am In-person & Zoom Service 5:45pm In-person & Zoom Service 7:00pm Teen Keshet Grades 7-8 12 Tevet	6 7:00am In-person & Zoom Service 4:19pm Candle Lighting Time 6:00pm First Friday Kabbalat Shabbat 13 Tevet	7 9:15am Shabbat Service (Sanctuary, in-person) 11:00am Children's Havura, K-2 Kehila, Jr. Congregation 5:30pm Havdalah Online 14 Tevet
8 9:00am BINA 9:00am In-person & Zoom Service 12:00pm BEKI Sisterhood Presents Author Liana Finck 5:45pm In-person & Zoom Service 15 Tevet	9 7:00am In-person & Zoom Service 5:45pm In-person & Zoom Service 7:00pm General Board Meeting (online) 16 Tevet	10 7:00am In-person & Zoom Service 5:45pm In-person & Zoom Service 17 Tevet	11 7:00am In-person & Zoom Service 4:00pm BINA 5:45pm In-person & Zoom Service 6:10pm Learning to LeYn w/Cantor Lash (reservations required) 7:30pm Learn New Shabbat Melodies (in-person) 18 Tevet	12 8:15am In-person & Zoom Service 5:45pm In-person & Zoom Service 7:00pm Teen Keshet Grades 7-8 19 Tevet	13 7:00am In-person & Zoom Service 4:26pm Candle Lighting 6:00pm Kabbalat Shabbat 20 Tevet	14 9:15am Shabbat Service Guest Sermon by Rev. Bonita Grubbs of CCA (Sanctuary, in-person) 11:00am Children's Havura, K-2 Kehila, Jr. Congregation 12:45pm Schmooze w/Rev.Grubbs 5:45pm Havdalah Online 21 Tevet
15 No BINA 9:00am In-person & Zoom Service 5:45pm In-person & Zoom Service 22 Tevet	16 Office Closed 9:00am In-person & Zoom Service (Federal Holiday Service Time) 5:45pm In-person & Zoom Service 23 Tevet	17 7:00am In-person & Zoom Service 5:45pm In-person & Zoom Service 24 Tevet	18 7:00am In-person & Zoom Service 4:00pm BINA 5:45pm In-person & Zoom Service 6:10pm Learning to LeYn w/Cantor Lash (reservations required) 7:30pm Prayer & Liturgy w/Rabbi Astor (special Zoom link) 25 Tevet	19 8:15am In-person & Zoom Service 5:45pm In-person & Zoom Service 7:00pm Teen Keshet Grades 7-8 & 9-10 26 Tevet	20 7:00am In-person & Zoom Service 4:35pm Candle Lighting 6:00pm Kabbalat Shabbat 27 Tevet	21 BINA Shabbat 9:15am Shabbat Service (Sanctuary, in-person) 11:00am Children's Havura, K-2 Kehila, Jr. Congregation 5:45pm Havdalah Online 28 Tevet
22 No BINA 9:00am In-person & Zoom Service 5:45pm In-person & Zoom Service 29 Tevet	23 Rosh Hodesh 7:00am In-person & Zoom Service 5:45pm In-person & Zoom Service 7:30pm Executive Board Meeting (online) 1 Shevat	24 7:00am In-person & Zoom Service 5:45pm In-person & Zoom Service 2 Shevat	25 7:00am In-person & Zoom Service 4:00pm BINA 5:45pm In-person & Zoom Service 6:10pm Learning to LeYn w/Cantor Lash (reservations required) 3 Shevat	26 8:15am In-person & Zoom Service 5:45pm In-person & Zoom Service 7:00pm Teen Keshet Grades 7-8 7:00pm New Haven Beit Midrash (off-site) 4 Shevat	27 7:00am In-person & Zoom Service 4:43pm Candle Lighting 6:00pm Kabbalat Shabbat 5 Shevat	28 9:15am Shabbat Service (Sanctuary, in-person) 11:00am Children's Havura, K-2 Kehila, Jr. Congregation 6:00pm Havdalah Online 6 Shevat
29 9:00am BINA 9:00am In-person & Zoom Service 9:45am Brunch & Learn w/Mark Oppenheimer 5:45pm In-person & Zoom Service 7 Shevat	30 7:00am In-person & Zoom Service 5:45pm In-person & Zoom Service 8 Shevat	31 7:00am In-person & Zoom Service 5:45pm In-person & Zoom Service 9 Shevat	<p align="center">Mark Your Calendar</p> <p>Feb. 4 Mick Lebowitz b'mitzvah</p> <p>Feb. 6 Tu B'shvat</p> <p>Feb. 11 Legacy Shabbat</p> <p>Mar. 7 Purim</p> <p>Mar. 11 Eleanor Blessing b'mitzvah</p> <p>Apr. 5 First Seder</p>			

Service Times

Sundays	Mondays	Tuesdays	Wednesdays	Thursdays	Fridays	Saturdays
9am Shaharit	7am Shaharit	7am Shaharit	7 am Shaharit	8:15am Shaharit	7 am Shaharit	9:15am Shaharit
5:45pm Maariv	5:45pm Maariv	5:45pm Maariv	5:45pm Maariv	5:45pm Maariv	6 pm Kabbalat Shabbat	



DATED

Non-Profit Organization
U.S. Postage
P A I D
Permit #131
New Haven, CT

Join BEKI on Facebook

Everyone is encouraged to join the [BEKI Facebook group](#). You'll enjoy the humor, community information, and links to cultural opportunities. You'll want to choose the private group with the stained-glass window image. Just ask to join. (The BEKI page with the hamsa is the public-facing page, which has few postings).

Donate Online

Fast and easy at
www.beki.org/give

E-Statements

Due to rising costs and BEKI's efforts to be more Earth-friendly, we have transitioned to e-statements and e-yahrzeits. If you prefer to receive them by paper, please contact the BEKI office at office@beki.org or 203-389-2108 x114. The BEKI Green Team supports BEKI's movement toward paperless communications and hopes the community will also.

Services

All services are also available on Zoom except Friday night and Saturday morning.

Sunday 9 am	Wednesday 7 am
Sunday 5:45 pm	Wednesday 5:45 pm
Monday 7 am	Thursday 8:15 am
Monday 5:45 pm	Thursday 5:45 pm
Tuesday 7 am	Friday 7 am
Tuesday 5:45 pm	Friday 6 pm
	Saturday 9:15 am

For the latest information on services, check [Happenings](#) or email bekitefilla@gmail.com