



RABBI'S  
RITUAL  
CORNER



[See story, Page 9](#)

Sivan-Tammuz 5783

Vol. 29 Issue 6

New Member Introductions on Page 3

# JUNE CELEBRATIONS

## Honoring Our Graduates

We will honor BEKI graduates on Saturday, June 10. We hope all of our graduates—middle school, high school, trade school, college, or graduate program—will participate in the service; please contact Rachel Adelstein, our [ritualcoordinator@beki.org](mailto:ritualcoordinator@beki.org). Parents of graduates are encouraged to email [rhweiner@sbcglobal.net](mailto:rhweiner@sbcglobal.net), Rebecca Weiner, about co-sponsoring the kiddush lunch.

Our honorees include:

**HIGH SCHOOL:** Marcia Colten, Reuben Colten, Helen Gerber, Hannah Herbst, Zachary Kleinstein, Elijah Light, Ella May, Sarah Rastelli.

**8<sup>TH</sup> GRADE:** Rachel Anderson, L Rosenthal.

**EZRA ACADEMY:** Joel Grutzendler, Shai Hurwitz, Zoe Katz, Mick Lebowitz, Natalya Moycik

Please send us additional names to be included in the July bulletin.

## Pride Shabbat

Saturday, June 17 will be BEKI's annual Pride Shabbat, honoring the diversity of gender identity and sexual orientation of our community. A festive kiddush lunch will follow. Feel free to invite friends! If you'd like to participate in the service, email [ritualcoordinator@beki.org](mailto:ritualcoordinator@beki.org), Rachel Adelstein. If you want to help sponsor Pride Kiddush, email Rebecca Weiner at [rhweiner@sbcglobal.net](mailto:rhweiner@sbcglobal.net).

## Annual Meeting Membership Celebration

BEKI's annual meeting will be in person on WEDNESDAY, June 14 (not on Zoom or livestream). We encourage you to attend the 5:45 pm service, followed by a light supper at 6:15 pm. The meeting will begin at 6:45 pm and end by 8 pm.

We'll celebrate reaching the milestone of 300 member units. Please read the introductions to some of our newest members, starting on page 3.

The slate of officers and board members will be presented; the past year will be reviewed; financial and endowment figures will be shared. We'll pause in memoriam as we remember those whom we lost during the past year: Philip Brown, Susan Adkins Marek, Stanley Saxe, and Jack Yakerson.



## Camp-Style Sing-Along

We had such a good time at the Lag BaOmer kumsitz that we're going to do it again! Our next singalong in the BEKI courtyard will be Thursday, June 22 at 7 pm, featuring camp songs. Everyone will be able to teach songs they remember from summer camp, whether in English or Hebrew. Again, you'll be able to make s'mores with fair trade chocolate, pareve graham crackers, and vegan marshmallows. Raindate will be Sunday, June 25. Questions? Consult [duboff.max@gmail.com](mailto:duboff.max@gmail.com).



Treat Yourself or Someone Else.

THREE 60-MINUTE MASSAGES FOR \$271  
(\$21 savings)

The Gift Every Pregnant Person  
Wants, Needs and Appreciates.





info@thewellforwomenct.com  
(203) 390-5542  
www.thewellforwomenct.com  
495 Blake St. Suite D. New Haven, CT 06515

## BEKI Bulletin

The newsletter is published monthly by Congregation Beth El-Keser Israel for the benefit of its members.

Congregation Beth El-Keser Israel is affiliated with the United Synagogue of Conservative Judaism.

To contribute articles or for inquiries regarding membership:

- Call the Synagogue office: 203.389.2108
- Write: 85 Harrison Street, New Haven, CT 06515-1724
- Email: [bulletin@beki.org](mailto:bulletin@beki.org)
- Visit our web page: [www.beki.org](http://www.beki.org)
- Follow us on social media:  
- For advertising information, call the synagogue office.

Deadline for submission of ads or articles is the first of the month preceding publication.

Annual subscription is \$36

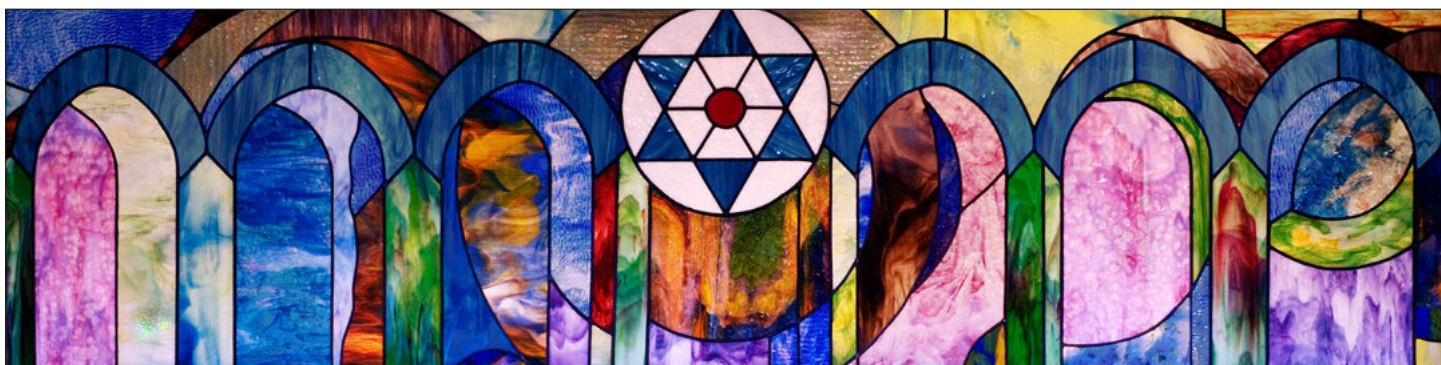
BEKI Bulletin © 2023 Congregation Beth El-Keser Israel.

Editor	Rachel Bashevkin
Associate Editors	Donna Levine, Donna Kemper
Layout & Design	Rachel Bashevkin, Bruce Oren

## Board of Directors

If you have questions or concerns, please speak with a Board member.

- |   |                   |                    |
|---|-------------------|--------------------|
| • Rachel Bashevkin (president) <a href="mailto:president@beki.org">president@beki.org</a> | • Rachel Doft     | • Sam Purdy        |
| • Jennifer Myer (vice-president)  | • Eric Dunsker    | • Jonathan Rohner  |
| • David Levy (vice-president)   | • Russell Epstein | • Tamara Schechter |
| • Steve Rudof (treasurer)   | • Mimi Glenn      | • Rob Schonberger  |
| • Donna Levine (secretary)  | • Michael Hurwitz | • Jay Sokolow      |
| • Murray Akresh   | • Yaron Lew       | • Evan Wyner       |
| • Harold Birn   |                   |                    |



BEKI STAINED GLASS WINDOW DESIGN BY CYNTHIA BETH RUBIN



# Introducing Our Newest Members

COMPILED BY ALICE KOSOWSKY AND RACHEL BASHEVKIN

Now that BEKI has grown to 300 member units, we want to introduce you to the people who have joined in the last year. Here is the first installment of introductions, written by our members themselves.

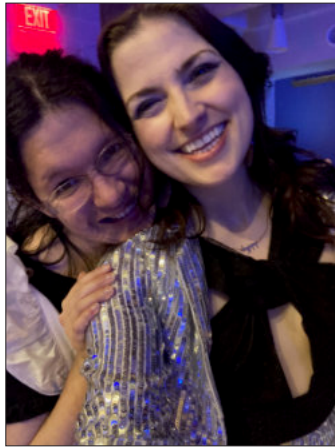
If you are a new member and have not replied to the query questions, please respond to [bulletin@beki.org](mailto:bulletin@beki.org) so that we can include it in the July issue.

## Ilana Barzel

I had a limited amount of Jewish education growing up, because I attended a Solomon Schechter Day School through second grade and then my parents transferred me into public school because of my developmental disabilities. But I had a loving support system through them, my older sister, and the shul community. I grew up Modern Orthodox, so over time I have learned to “code switch” between being both frum and secular.

I live in New Haven now and hope to become a member of one of the teams for Kiddush.

If I could find a fellow member who shared a particular hobby or interest, maybe someone who’s artistic; I love seeing plays and I’ve been playing cello since 4th grade.



**Ilana Barzel behind Rachel Beaver at Purim**

## Jonathan Cohen & Shayna Schor and Caleb

Listed from tallest to shortest, we are Jon, Shayna, and Caleb. Even though he is very short, Caleb (age 14 months) is the important one to remember. We live in East Rock.

Shayna and Jon grew up Conservadox and modern

Orthodox, respectively, and both went to Jewish day school. We're very excited that BEKI is the first shul we've joined as a family. Caleb had his first Jewish experience as an eight-day old and was not really a fan, but I think it's growing on him.

Favorite parts of being Jewish are the opportunities for connection and shared ritual with our friends and family. Also bagels. We hope to be able to sit in the main service as a family sometime in the next decade!

Jon would look for someone who enjoyed board games. Caleb would look for another baby whose socks he can try to steal. Both have already made a lot of great progress.



**Jonathan Cohen & Shayna Schor**



**Naftali Caplan**



**Coretta Caplan**

## Coretta & Naftali Caplan and baby Jonah Caplan

We live in Westville. Baby Jonah is going to have many different types of Jewish (and some not Jewish) influence from his extended family. We are so excited for him to also have the influence of BEKI, which seems to be deeply respectful of Torah and tradition as well as humanism and egalitarianism. Thank you for your work for our community!

Continued on **Page 4**

### New Members

Continued from **Page 3**

#### Toni Davis & Leslie Brisman



Splitting our time between Westville and Madison, CT, we were looking for a vibrant area Conservative synagogue with an emphasis on learning and community, an interactive D'var Torah, and possibly a liberal service. We are delighted to be new members at BEKI.

We so much admire Rabbi Woodward's commitment to teaching and look forward to future new and exciting sessions on a variety of topics. His wisdom and warmth certainly help light the way to BEKI. At the same time, we also admire and love the fact that a sizeable number of congregants can daven and read Torah! The unrestrained excitement of little ones further adds to the pleasure in feeling that Am Yisrael Chai!

#### Trezlen Drake

I'm excited to be a part of BEKI and meet you all, so be sure to introduce yourself to me at kiddush.

My favorite part of being Jewish is the fact that our religious life and the observance of holidays are as communal as they are individual. For example, I like sharing Shabbos with others, but I also like that it is something that I can do, get to do, alone.



I live in Westville and am interested in developing a creative or crafty habit. I pretend to knit, crochet, and play guitar, but it's really easy not to practice when it is just me. I also like going to movies, watching sci-fi TV, and reading books.

#### Tom Goldenberg & Jessica Holzer and Ainsley



Tom is a New Haven Mayoral candidate and was previously a public sector consultant. Jess is the chair-elect of the University of New Haven's public health department. Ainsley is in kindergarten in New Haven Public Schools, and we live in the East Rock neighborhood.

Favorite parts of being Jewish for Tom are the food and social gatherings. Ainsley says she likes eating matzah. Jess' favorite part is the community. Ainsley says she is also a fan of BEKI children's programs.

Tom says he is always looking for fellow fans to see jazz music with. Jess is interested in meeting fellow gardeners.

#### Alisa & Glenn Levine



We moved to Connecticut from the Boston area in September of 2021 to be closer to our children (Rozzie & Ben in New Haven and Avi & Arielle in Fairfield) and our grandchildren (Charlie, Shayna & Zoe). Shortly thereafter we were "recruited" by the Rodwin family, Charlie & Shayna and their parents, to join their shul—BEKI.

We've always been a synagogue-centric family and miss the community we left behind in Needham, MA. It is

Continued on **Page 5**



### New Members

Continued from **Page 4**

so gratifying for us to see the next generation understand the importance of synagogue life for themselves and for their children. It's been challenging to fully engage during these tougher COVID times, but we do hope, little by little, to build strong connections of our own within our new BEKI community.

#### Allison Jacobs & Joshua Kuhr and Noa and Oren



We live in Westville. When we came to BEKI, we were excited to see the large number of children and families that were local to the Westville community. Having a place for the kids and us to learn and socialize is important.

#### Jacob Robins

The shared joy of davening and learning together is my favorite part of being Jewish. I live in East Rock and would be happy to share interests like keeping up with various sports teams (MLB, college basketball, Premier league) or D&D with other BEKI people.



#### Coleman and Tema Leviter

We moved to the New Haven area to live closer to our children, in Woodbridge and also Portland, ME. We were in East Northport, Long Island where we lived for 40 years as active members of the Commack Jewish Center, which later merged with Dix Hills Jewish Center.



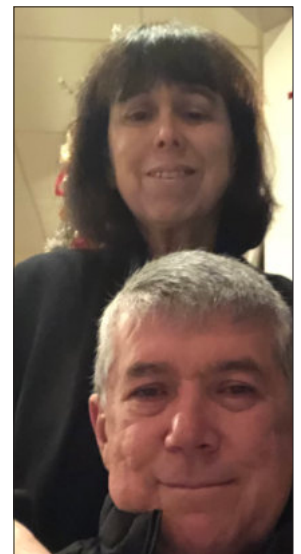
Coleman works full time as an IT professional, and Tema owned a specialty food store in the Five Towns area of Long Island for forty years. She works remotely part time now as a financial professional for a small company, and has already joined the BEKI Kiddush committee.

Tema is an avid reader, and Coleman enjoys golf and emptying the house of unwanted items on Ebay, which he has been doing since 1998. Our children remarked at their bnai mitzvah that "Dad would sell us on Ebay if it weren't for Mom!"

#### Mike and Lisa Woodward

After spending their entire lives in Los Angeles, Lisa and Mike finally left those sunny, earthquake-prone environs and moved to follow their kids to the east coast in 2019. Lisa had worked as a Literacy Specialist at a Jewish Day School in Los Angeles for many years, and as the Educational Director for OROT, a program for Jewish children with learning differences, in Philadelphia for 2 years.

Mike is a California Land Use Attorney who works on various planning, zoning, and entitlement issues for clients in Southern California. Lisa and Mike moved to Woodbridge in mid-2022 and are enjoying "country" living and taking their granddaughters back and forth to school, shul, and home, and entertaining their grandsons from Washington, DC (think choo-choo trains, Legos, and forts). Mike and Lisa are excited to be a part of the BEKI Community!



## Sam Werlin Bar Mitzvah

The bar mitzvah of Samuel Aaron Werlin, son of Lesley Frame and Steve Werlin, will be celebrated on Friday-Saturday, June 2-3, *parashat Nasso*. The congregation is invited to attend.

Kiddush lunch, sponsored by Lesley and Steve, will follow.

Sam is currently in 7th Grade at the Engineering Science University Magnet School (ES-UMS), where he enjoys Science Club and learning French. In addition to his academic pursuits, Sam runs track and cross country with the New Haven Age Group Track Club, and this spring he's helping with a neighborhood production of *Beauty and the Beast*. But most of all, Sam loves his friends, community, and family, and he's excited to celebrate with all of them on June 3.



Sam Werlin

## Art Reproductions and Posters

During the post-High Holy Day sanctuary renovation period, the Art Committee plans to fill the walls of the BEKI upstairs gallery areas with posters and other art reproductions. Framed posters behind glass or plexiglass are preferred. Donations should be imagery which is synagogue friendly. Posters can be left in the office for us, or write to [art@beki.org](mailto:art@beki.org).

## Prize Code in this Bulletin

Within an article in this bulletin, there's a Prize Code. If you are one of the first five people to find it and email it to [bulletin@beki.org](mailto:bulletin@beki.org), you will be one of this issue's prize winners.

## Closing in on the Fundraising Goal

Rabbi Eric Woodward and his wife Katharine Baker have pledged \$10,000 towards the \$1,250,000 needed to complete the major renewal of our sanctuary. This significant pledge demonstrates our rabbi's commitment to this project.

"Giving to the sanctuary redesign effort is giving for the future — and that's why we all need to give generously," Rabbi Woodward said. "We're building the sanctuary space our growing synagogue needs, and we need everyone's help."

As of early May, donations and pledges reached \$692,000 of which about \$420,000 has already been paid. Since several donors have agreed together to match all pledges after March 20 on a one-to-one basis, that brings the total as of early May to \$740,000.

To reach our goal and minimize our borrowing costs, Fundraising Committee members have been asking every member to give something, and those who already made donations or pledges to consider giving more. We prefer that pledge payments be made this year; however, if it will allow you to increase the amount of your pledge, we are accepting payment over a period not to exceed five years.

Please contact Peggy in the BEKI office to make your pledge and indicate your payment period. Email her at [office@BEKI.org](mailto:office@BEKI.org) or call 203-389-2108 ext. 114. If you want to talk to someone about the redesign or your pledge, please contact anyone on the Sanctuary Fundraising Committee.

Thank you very much for your generosity!

BEKI Sanctuary Fundraising Committee: Murray Akresh, Yaron Lew, Mark Oppenheimer, Jessey Palumbo, John Wareck, John Weiser.

## Welcome New Members

Trezlen Drake

Jake Brownstein & Katie Grant

המקום ינחם

HaMakom Yinachem

With sorrow we note the passing of

Barry Levine, brother of Glenn (and Alisa) Levine

May the Almighty comfort those who mourn



## BINA's Sixth Grade Artists

BY ANNIE NORMAN-SCHIFF, EDUCATION DIRECTOR

May marked the end of the school year for BINA, BEKI's religious school. At our final BINA Shabbat on May 20, we honored the successes of all of our students, but in particular our graduating sixth graders. This small but mighty class included Almanzo Abraham, Sammi Barkon, Maya Gersch, and Jacob Kleinstein. They were taught by Morah Cliel Shdeimah, a masters student in Hebrew Bible at Yale Divinity School.

This class was distinguished by their special interest in the arts. Morah Cliel brought creativity into almost everything they learned this year. When they studied the parsha, they interpreted the story with clay miniatures. When they translated favorite pop songs into Hebrew, they painted beautiful album covers. The class also studied Jewish history, from the beginnings of Sephardic and Ashkenazi Jewish communities in the Middle Ages, to the Holocaust and modern Israel.

These interests came together in a final art project, based on their study of the Holocaust and their reading of the young adult novel *The Book Thief*. In the novel, a German girl is taught to read by a Jewish man whom her family is hiding. The man writes a book for her, which he creates by painting over a copy of Mein Kampf. The sixth graders painted over book pages themselves to create their own works of art, inspired by what they learned about the Holocaust as well as stories of survival from their own families.

Our graduating students will remain involved at BEKI next year in several ways. They will begin individual tutoring in preparation for becoming *bnai mitzvah*. They will have the opportunity to join Teen Keshet, our learning program for teenagers. And one graduate, Sammi Barkon, will be returning to BINA, this time as a *madrisha* (aide). She will be helping out next year in Moreh Zane's kindergarten class.

We also wish Morah Cliel the best, as she graduates from Yale and begins a PhD program in Hebrew Bible at the University of Toronto.



From left, BINA sixth graders Maya Gersch, Sammi Barkon, Almanzo Abraham, and Morah (teacher) Cliel Shdaimah. Classroom wall mural by Susan Adkins Marek.





**This group of volunteers at the 2022 Interfaith Day of Service assisted the Hebrew Burial and Free Loan Association.**

## Interfaith Service Day

On Sunday, Aug. 6, BEKI is participating in an interfaith day of service. Work projects that morning will include building a house with Habitat for Humanity, preparing food for the hungry with the Downtown Evening Soup Kitchen, restoring a cemetery with the Hebrew Burial and Free Loan Association, pounding guns into garden tools with Swords to Plowshares, or cleaning our shores with Save The Sound. Lunch will be on the Green at 12:30 pm, and everyone is encouraged to linger through 4 pm, taking advantage of this opportunity for fellowship and great music. Prizecode 657832023

There is no cost to participate. Click [here](#) to register.

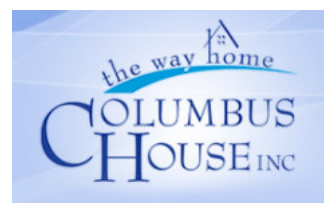
## Maot Chittim Donations

Literally “money for wheat,” our \$1,000 in Pesach Maot Chittim donations to Rabbi Woodward’s Tzedakah Fund were sent to CCA to support their Client Choice Food Pantry in The Hill section of New Haven. Charmain Yun, CCA’s Director of Administration and Planning, wrote, “Thank you for the ways you have supported and will continue to support CCA families in need. So grateful for your generous hearts, willing spirits, and capable hands!”

## New Liaisons Needed

As Max DuBoff steps away from the role (so he can focus on his doctoral dissertation!), we need a new Columbus House liaison. In that role, Max organized a monthly food delivery and coordinated a holiday dinner sponsored by local synagogues. An additional option for the liaison is registering BEKI to resume cooking and/or serving a monthly meal at Columbus House. Max will happily train you; introduce you to Sheree DiMario, the excellent Volunteer Coordinator at Columbus House; and support you during the transition. If you are interested, please email [duboff.max@gmail.com](mailto:duboff.max@gmail.com).

We also need a new liaison to JCARR, the Jewish Community Alliance for Refugee Resettlement. The job can be just keeping BEKI informed of current JCARR projects and needs, or enhanced with direct interaction with refugee



family members. For more information, contact current liaison Madeleine Kleinman at [madk117@gmail.com](mailto:madk117@gmail.com).



## Supporting Daily Services

To make sure we have a minyan consistently, please use [Minyan Maker](#). Up top, you choose which weekday service you are planning to attend (morning or afternoon). Then find your name below and choose "I'll be there." If your name does not appear on the list, just email [ritualcoordinator@beki.org](mailto:ritualcoordinator@beki.org).

## Sign up for Torah Reading

If you are able to read an aliyah of Torah or a Haftarah, make your selection via our online [spreadsheet](#). Just scroll down to the proper date to see details about each aliyah. Questions? Consult Rachel Adelstein at [ritualcoordinator@beki.org](mailto:ritualcoordinator@beki.org).

## Weekly Class

Join Rabbi Woodward for a discussion of the week's Torah portion on Thursdays 9-9:45 am in the library, following 8:15 am Shacharit.

### Donate Online

Fast and easy at  
[www.beki.org/give](http://www.beki.org/give)

**Gabor Peterdi,  
Flowering Quince, 1966;  
from A Genesis, a suite  
of 15 etchings, half of  
which are on display in  
the BEKI Beit Midrash.**



## RABBI'S RITUAL CORNER



Each month in this space, I'll brief you on — or expand on — halakhic issues around the synagogue.

### *The Ritual of Bikkurim at Shavuot*

Shavuot, which we celebrate over Memorial Day Weekend, is a strange holiday. With no fixed date mentioned in the Torah, it is just a celebration at the end of counting the Omer. It has no reason given in the Torah beyond agricultural. The entire association of the holiday with the giving of the Torah does not come until the Talmud. And it is impoverished in mitzvot: there isn't a lot that you're supposed to do on Shavuot. The customs of staying up the first night for a "Tikkun Leyl Shavuot" and of eating dairy on the first day are relatively late; the holiday itself is mostly an end-of-Omer situation. The name of the holiday, Shavuot, refers to the weeks of the Omer.

Yet there was one ritual observed at this holiday in Temple times that sharpens its significance—the ritual

of Bikkurim, of bringing the first produce of one's harvest to the Temple in gratitude.

Traditionally, the Bikkurim offering was taken as an offering of the seven species that you were growing — wheat, barley, olives, dates, pomegranates, figs, and grapes — which you would bring to Jerusalem. Upon arrival, you would do two things: present them to the priest (or kohein) in charge, and also read a passage in which you described the national redemption from Egyptian slavery.

This is a model of robust gratitude —being thankful not only for the produce, but also for the processes that brought us to this moment.

May this summer bring us a deeper sense of gratitude and plenty.

### Rabbi's Tzedakah Fund

- Rhoda & Allen Samuel for Christian Community Action (CCA)
- Jeff Finkelstein in appreciation of letting him participate in Siyyum Bechor

### Maot Chittim for Pesach

- Sonny Alderman
- Rachel Bashevkin
- Shirley & Jay Brodach
- Julie Cohen & Jim Stacey
- Tamar Edelkind
- Stewart Frankel & Joy Kaufman
- The Freiman-Light family
- Harriet Friedman
- Mimi Glenn
- David & Janet Golden
- Howard Gralla & Linda Schultz
- Roy & Karen Herbst
- Sherry Kent & Richard Kantrowitz
- Diane Krevolin
- Alisa & Glenn Levine
- Polina Naiman
- Tamara Schechter & Jessica Bod

- David Schwartz
- Steve & Caryl Steinberg
- Steve & Rachel Wizner

### Kiddush Fund

- Michael Schaeffer & Rebecca Weiner
- Anonymous
- Ellen Cohen & Steve Wizner
- Anonymous
- Cantor Shoshana Lash
- Rachel Bashevkin
- Anonymous

### Chai/Synagogue Fund to support synagogue operations

- To BEKI with thanks for the support and kindness following Phil's long illness by Lauren Brown

### To Cynthia Rubin in honor of the birth of her great niece Cozy by

- David & Darryl Kuperstock

### To Mira & Eli Lebowitz in with sympathy on the passing of David Raz by

- Stewart Frankel & Joy Kaufman

### To Roger Colten, Sarah Berry and family with sympathy on the passing of Shirley Colten by

- David & Darryl Kuperstock
- Yaron Lew
- The Freiman-Light Family
- Steve & Rachel Wizner
- Rachel Bashevkin
- Sid & Donna Levine (to the Ari Nathan Levine Children's Library Fund)
- Ellen Cohen & Steven Fraade
- Cynthia Rubin

### To the BEKI community by

- Richard Weingarten

### To Roya Hakakian, Ramin Ahmadi & family with sympathy on the passing of Helen Bokhour by

- Cynthia Rubin

### To Eleanor Blessing in honor of their B'Mitzvah by

- Ellen Cohen & Steven Fraade

### To Jesse Mattison in honor of their B'Mitzvah by

- Ellen Cohen & Steven Fraade

### To Ina Silverman & Jay Sokolow in honor of their

### 65<sup>th</sup> birthdays by

- Joanne & Steve Rudof

### Yahrzeit Fund to support synagogue operations

#### In Memory of:

- Richard J. Alderman by Barbara Stein
- Sol Leviter by Coleman & Tema Leviter
- Dora Shure by Betsy Shure Gross & Gary Gross
- Marvin Voloshin by Cindy Smernoff Voloshin
- Milton Lubarr by Gila Reinstein
- Rose Kimmel by Anette Kisner
- Frances Singer by Anette Kisner
- Mendel Rosner by Sara-Ann & Hillel Auerbach
- Simon Berman by Richard Neveloff
- Hyman H. Haves by Maera Haves Mougin
- Kate Press by Joyce Popowski
- Eli & Goldie Kasimer by Joseph Kasimer
- Steve Katz by Harriet Katz
- Anne Benson by Joanne & Steve Rudof

## Gift Shop

### Shop for Father's Day

Show Dad you appreciate his devotion to tefillah: Buy him a new talit, a new kippah, or a mini travel friendly Etz Chayim chumash. Does dad like to cook for Shabbat? The *52 Shabbats* cookbook is available. If the cooking is stressful, a sip of a favorite beverage in our stylish shot glass sets and tumbler sets will bring a smile to his face. Recycled glass cufflinks are on sale.



Since June is a favorite month for weddings, we have a beautifully hand-made smash glass candlesticks set. Does the new couple need a mezuzah? We have a wide variety of covers and klaffs.

As always, we have a large selection of Jewish themed books for adults and kids. We are always open to your suggestions, and we will help you find something and order it for you.

We are open every day by appointment except Shabbat. We are just a phone call away. Karen 203.430.2182. Harriet 203.675.8607.





MICHAEL MARTONE  
MANAGER



**Arnold's Jewelers**

DIAMONDS - WATCHES - GIFTS  
CHINA - SILVER - CRYSTAL

WATCH AND  
CLOCK REPAIRING

NORTH HAVEN SHOPPING CENTER  
NORTH HAVEN, CONN. 06473  
203-239-4291



**NEW SYLVAN CLEANERS**

*All Work Done On Premises*

Mon.-Fri. 7:00-6:00 | Sat 8:00-4:00 | Sun closed

363 Whalley Ave. New Haven, CT 06511 • 203.562.3460  
663 Orange Center Rd. Orange, CT 06477 • 203.795.0087



**ROBERT E. SHURE, INC.**  
FUNERAL HOME

Dedicated to the Dignity and Respect of Tradition

543 George Street, New Haven, CT 06511

Robert E. Shure  
Founder

203-562-8244  
[shurefuneralhome.com](http://shurefuneralhome.com)

James M. Shure  
President

**RAVIT AVNI-SINGER, MSW LCSW**  
CHILD, ADOLESCENT AND ADULT PSYCHOTHERAPY  
PARENT CONSULTATION

1 BRADLEY ROAD, SUITE 906  
WOODBIDGE, CT 06525

(203) 389-9174  
BY APPOINTMENT



40 Boston Post Rd (RT 1)  
West Haven CT 06516  
203-933-2886

888 Wethersfield Ave  
Hartford CT 06114  
860-296-9799

[www.startireandwheels.com](http://www.startireandwheels.com)  
Andy & Paige Weinstein

# NOLAN'S

HAMDEN MONUMENT COMPANY

LICHTENSTEIN COMPANY

323 Washington Ave. Hamden CT 06518

(203) 288-8486

(203) 287-1593

CT toll free only (800) 852-8865

Fax (203) 287-1593

John Nolan

Michael Nolan

[nolansmonuments@att.net](mailto:nolansmonuments@att.net)

## Child and Adolescent Health Care, L.L.C.

A. Joseph Avni-Singer, M.D., FAAP

Shari Storeygard, M.D., FAAP

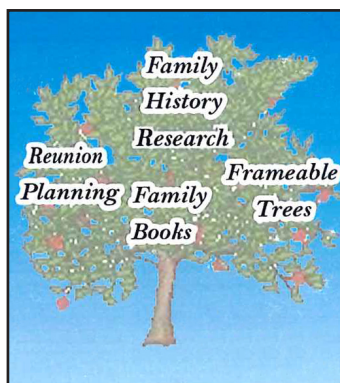
Shannon Martinello, M.D., FAAP

Miranda Bik-Yin Ip, M.D., FAAP

Namita Wijesekera, M.D., FAAP

303 WHITNEY AVENUE  
NEW HAVEN, CT 06511  
(203) 776-1243  
FAX (203) 785-1247

1 BRADLEY ROAD, SUITE 102  
WOODBIDGE, CT 06525  
(203) 397-1243  
FAX (203) 397-1241



## Many Generations

Kim Formica  
Genealogist

PO Box 1248  
Orange, CT 06477  
tel. 203/376.8551

[kimformica@optonline.net](mailto:kimformica@optonline.net)



**Challenging Minds,  
Nurturing Hearts**

## Grow with us!

Ezra Academy is a preschool through 8th grade Jewish day school offering outstanding academics and a nurturing community, rooted in the Jewish tradition of critical thinking and ethical behavior.



LEARN MORE:  
[EZRAACADEMYCT.ORG](http://EZRAACADEMYCT.ORG)  
[INFO@EZRAACADEMYCT.ORG](mailto:INFO@EZRAACADEMYCT.ORG)

SCHEDULE A TOUR:  
[EZRAACADEMYCT.ORG/VIRTUAL-TOUR](http://EZRAACADEMYCT.ORG/VIRTUAL-TOUR)



EZRA ACADEMY  
WELCOMES A WIDE  
SPECTRUM OF  
RELIGIOUS AND  
CULTRAL BELIEFS AND  
AFFILIATIONS.







*What will your Jewish legacy be?*

**Corinne Blackmer and Pilar Stewart  
Created a Legacy for Their Synagogue,  
Congregation Beth El-Keser Israel**

*"Pilar and I are deeply committed to Beth El-Keser Israel and love the Jewish community there, the sense of authentic community, and the diversity. As a lesbian couple, we are leaving a legacy in particular to nurture diversity at our shul." — Corinne*

For more information, contact the Jewish Foundation of Greater New Haven  
Lisa Stanger, Executive Director | (203) 387-2424, ext. 382 | [lstanger@jewishnewhaven.org](mailto:lstanger@jewishnewhaven.org)  
Tamara Schechter, Create a Jewish Legacy Manager | (203) 387-2424, ext. 325 | [tschechter@jewishnewhaven.org](mailto:tschechter@jewishnewhaven.org)

**GR** *Greenberg Rhein & Margolis Inc.*

**David B. Margolis, CIC**

1768 Litchfield Turnpike (Rte. 69)  
Woodbridge CT 06525-2309  
Tel: (203) 389-4511 • Direct (203) 907-4829  
Fax (203) 397-2266 • Cell: (203) 668-0344  
Email: [david@grminsurace.com](mailto:david@grminsurace.com)  
[www.grminsurace.com](http://www.grminsurace.com)



**Hamden Hall  
Country Day School**

Educating students in  
PreSchool through Grade 12.

We celebrated National Mix It Up Day  
in October to foster greater respect  
and understanding among our students.

[www.hamdenhall.org](http://www.hamdenhall.org) 203.752.2610  
1108 Whitney Ave., Hamden, CT 06517

**CW** **Coachworks**  
of West Haven  
Auto Body Shop

1058 Orange Avenue • West Haven, CT 06516  
Tel: 203.932.1200 Fax: 203.932.1222  
Scott Walstedter

**BEKI'S FAVORITE  
DJ/MC ENTERTAINMENT**

**CALL CHARLES!!!  
203.795.4737**

# PRIDE MONTH IS INTEGRAL

Earlier this spring, we read in synagogue “V’ahavta l’reiakha kamocho,” that is, “Love your neighbor as yourself” (Lev. 19:18). The day after reading this, I asked some of our BINA students in grades 2-6 what this meant to them.

“It means caring about other people.” “It’s the golden rule.” “It means you have to love yourself.”

All of these are true, but I want to lift up “It means you have to love yourself.”

June is what we call Pride Month, a month of celebration of LGBT people and culture. And that idea of pride — being proud of oneself, loving oneself — is something that is integral for being able to love others.

A few weeks ago, I wrote about the commandment to “love your neighbor as yourself.” This means something very important: we cannot love our neighbors properly without loving ourselves. We have to know ourselves and care for ourselves. We have to grow ourselves and learn who we are in order to create love in the world.

About a month ago, Rabbi Shai Held, at the Hadar Rabbinic Yeshiva Intensive, spoke about how it is hard to give love if we don’t receive it. That is, love is epistemological — through the experience of being loved and loving, we can come to know things about the world (and about God) that we might not otherwise come to know.

If we want to understand God’s love, which is a central Jewish component, we need to work on our relationships in which we give and feel love. One of those is the relationship to the self.



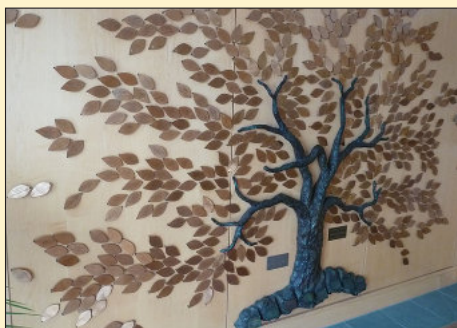
Eric Woodward

The work of figuring out one’s own identity — and this means, yes, the questions of one’s gender identity and who one loves, but also the questions of one’s spiritual identity, and one’s way of being in the world, all of which are connected — is crucial to forming ourselves as loving and lovable. And since it’s our duty as a synagogue to try to foster people’s spiritual and Jewish development, we have a specific interest in making sure that government does not impede individuals’ spiritual development.

In other words, Pride Month is integral to our synagogue’s mission. And that’s why I’m excited that we will celebrate Pride Shabbat on June 17. I will be out of the country traveling that day, but I want to encourage you to attend. Not only to express pride, but to feel pride — to feel blessed by the important Torah that so many in the LGBT community have taught. And to think about ways that you can feel proud — that you can find in yourself the capacity to feel loved so that you can love the neighbor.

I want to promote to you an amazing [teshuvah](#) on the importance of trans identity. Written by Alexandra Rose Kohanski, titled “Be Whole: A Halakhic Approach to Gender and Transition,” it is one of the smartest, most legally and theologically sophisticated teshuvot that I have read. I urge you in the strongest terms to read it, particularly if you are looking for a textually robust Jewish approach to the topic. It is characteristic of much of the work of Svava, a yeshiva whose mission is to “empower queer and trans people to expand Torah and tradition through the spiritual practice of Talmud study.” At the Svava website, you can also find other [teshuvot](#) and [Tefilat Trans](#), a liturgical project.

Wishing you a loving Pride Month,  
Rabbi Woodward



## Tree of Life Awaits Your Leaf

The Tree of Life at the entrance to BEKI is a collection of golden leaves that honor people and moments in our lives. For \$118 you can add a leaf. Contact Marjorie Wiener at 203.387.6278 or [marjoriewiener@yahoo.com](mailto:marjoriewiener@yahoo.com)



# June 2023

12 Sivan 5783 - 11 Tammuz 5783

Sunday

Monday

Tuesday

Wednesday

Thursday

Friday

Saturday

## Mark Your Calendar

**July 27** Tisha BeAv  
**Aug 6** Interfaith Service Day  
**Sept 16/17** Rosh Hashanah  
**Sept 24** Kol Nidre  
**Sept 25** Yom Kippur

				<b>1</b> 8:15am In-person & Zoom Service 9am Torah Study 5:45pm In-person & Zoom Service 6pm Teen Keshet Grades 7-9	<b>2</b> 7am In-person & Zoom Service 6pm Samuel Aaron Werlin Bar Mitzvah 8:01pm Candle Lighting	<b>3</b> 9:15am Samuel Aaron Werlin Bar Mitzvah 11am Children's Havura, K-2 Kehila, Jr. Congregation
				12 Sivan	13 Sivan	14 Sivan
<b>4</b> 9am In-person & Zoom Service 5:45pm In-person & Zoom Service	<b>5</b> 7am In-person & Zoom Service 5:45pm In-person & Zoom Service	<b>6</b> 7am In-person & Zoom Service 5:45pm In-person & Zoom Service	<b>7</b> 7am In-person & Zoom Service 5:45pm In-person & Zoom Service	<b>8</b> 8:15am In-person & Zoom Service 9am Torah Study 5:45pm In-person & Zoom Service	<b>9</b> Rabbi Off 7am In-person & Zoom Service 6pm Kabbalat Shabbat 8:05pm Candle Lighting	<b>10</b> Rabbi Off Graduates' Shabbat 9:15am Shabbat Service (Sanctuary, in-person) 11am Children's Havura, K-2 Kehila, Jr. Congregation
15 Sivan	16 Sivan	17 Sivan	18 Sivan	19 Sivan	20 Sivan	21 Sivan
<b>11</b> Rabbi Off 9am In-person & Zoom Service 5:45pm In-person & Zoom Service	<b>12</b> 7am In-person & Zoom Service 5:45pm In-person & Zoom Service	<b>13</b> 7am In-person & Zoom Service 5:45pm In-person & Zoom Service	<b>14</b> Rabbi Off 7am In-person & Zoom Service 5:45pm In-person & Zoom Service 6:15pm Light Dinner 6:45pm Annual Meeting	<b>15</b> Rabbi Off 8:15am In-person & Zoom Service 5:45pm In-person & Zoom Service	<b>16</b> Rabbi Off 7am In-person & Zoom Service 6pm Kabbalat Shabbat 8:08pm Candle Lighting	<b>17</b> Rabbi Off Pride Shabbat 9:15am Shabbat Service (Sanctuary, in-person) 11am Children's Havura, K-2 Kehila, Jr. Congregation
22 Sivan	23 Sivan	24 Sivan	25 Sivan	26 Sivan	27 Sivan	28 Sivan
<b>18</b> Rabbi Off 9am In-person & Zoom Service 5:45pm In-person & Zoom Service	<b>19</b> <b>Rosh Hodesh I</b> Rabbi Off 7am In-person & Zoom Service 5:45pm In-person & Zoom Service	<b>20</b> <b>Rosh Hodesh II</b> Rabbi Off 7am In-person & Zoom Service 5:45pm In-person & Zoom Service	<b>21</b> Rabbi Off 7am In-person & Zoom Service 5:45pm In-person & Zoom Service	<b>22</b> Rabbi Off 8:15am In-person & Zoom Service 5:45pm In-person & Zoom Service 7pm Camp-Style Sing-along (rain date, 6/ 25)	<b>23</b> 7am In-person & Zoom Service 6pm Kabbalat Shabbat 8:10pm Candle Lighting	<b>24</b> 9:15am Shabbat Service (Sanctuary, in-person) 11am Children's Havura, K-2 Kehila, Jr. Congregation
29 Sivan	30 Sivan	1 Tammuz	2 Tammuz	3 Tammuz	4 Tammuz	5 Tammuz
<b>25</b> 9am In-person & Zoom Service 5:45pm In-person & Zoom Service 7pm Camp-Style Sing-along rain date	<b>26</b> 7am In-person & Zoom Service 5:45pm In-person & Zoom Service	<b>27</b> 7am In-person & Zoom Service 5:45pm In-person & Zoom Service	<b>28</b> 7am In-person & Zoom Service 5:45pm In-person & Zoom Service	<b>29</b> 8:15am In-person & Zoom Service 9am Torah Study 5:45pm In-person & Zoom Service	<b>30</b> 7am In-person & Zoom Service 6pm Kabbalat Shabbat 8:10pm Candle Lighting	
6 Tammuz	7 Tammuz	8 Tammuz	9 Tammuz	10 Tammuz	11 Tammuz	

## Service Times

Sundays	Mondays	Tuesdays	Wednesdays	Thursdays	Fridays	Saturdays
9am Shaharit 5:45pm Maariv	7am Shaharit 5:45pm Maariv	7am Shaharit 5:45pm Maariv	7 am Shaharit 5:45pm Maariv	8:15am Shaharit 5:45pm Maariv	7 am Shaharit 6 pm Kabbalat Shabbat	9:15am Shaharit

### Advertise in the Bulletin

Would you like your ad here in the coming year? Each month, the BEKI bulletin reaches over 700 households, most of them in the New Haven area. Check with Peggy in the BEKI office about our variety of ad rates.

### Easy Fundraiser

The Stop & Shop gift cards sold by the BEKI office are debit cards for groceries or gasoline. This is an ongoing fundraiser that costs you nothing. Contact Peggy [office@beki.org](mailto:office@beki.org) to arrange pickup.

### Join BEKI on Facebook

Everyone is encouraged to join the [BEKI Facebook group](#). You'll enjoy the humor, community information, and links to cultural opportunities. You'll want to choose the private group with the stained-glass window image. Just ask to join. (The BEKI page with the hamsa is the public-facing page, which has few postings).

### E-Statements

Due to rising costs and BEKI's efforts to be more Earth-friendly, we have transitioned to e-statements and e-yahrzeits. If you prefer to receive them by paper, please contact the BEKI office at [office@beki.org](mailto:office@beki.org) or 203-389-2108 x114. The BEKI Green Team supports BEKI's movement toward paperless communications and hopes the community will also.

### Services

All services are also available on Zoom except Friday night and Saturday morning.

Sunday 9 am	Wednesday 7 am
Sunday 5:45 pm	Wednesday 5:45 pm
Monday 7 am	Thursday 8:15 am
Monday 5:45 pm	Thursday 5:45 pm
Tuesday 7 am	Friday 7 am
Tuesday 5:45 pm	Friday 6 pm
Wednesday 7 am	Saturday 9:15 am

For the latest information on services, check [Happenings](#) or email [bekitefilla@gmail.com](mailto:bekitefilla@gmail.com)