



Purim Schmooze

What does this goofy holiday mean? Join Rabbi Woodward in the library on Saturday, March 4 at 12:45 pm to look at some of the core texts around the holiday's messianism and messiness.

MARCH EVENTS



Carol Anderson Film

The new documentary "[I, Too](#)" will be shown on BEKI [Zoom](#) Wednesday, March 1 at 7:30 pm, followed by a conversation with its producer at 8:30 pm. Narrated and conceived by Professor Carol Anderson, the film, which takes its title from the poem by Langston Hughes (see page 6), puts the January 6, 2021 insurrection in a historical context. Professor Anderson is the author of several books, including the *New York Times* bestseller *White Rage: The Unspoken Truth of Our Racial Divide*.

Artist Talk March 5

Cynthia Beth Rubin will speak about *Sensing Connection*, her retrospective [exhibition](#) currently in the BEKI galleries, on Sunday, March 5 at noon in the downstairs social hall. Lunch will be served; RSVP to art@beki.org.



Cynthia Beth Rubin

Purim Festivities

Purim bag [orders](#) are due by

Wednesday, March 1. You can pay by check or by [credit card](#).

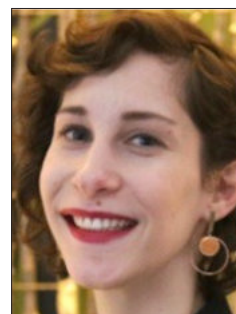
We will read the Book of Esther Monday evening, March 6. Adults and children are encouraged to come in costume. Minchah will start at 5:45 pm, followed by Maariv and the Megillah reading. Purim bags will be distributed.

BINA's children's program will start at 4 pm. We hope all other BEKI children (with their adults) will attend also. See details on page 5.

On Purim Day, Tuesday, March 7, services will be at 7 am and — *note earlier time* — 5 pm.

At Our Southern Border

Liora Cohen-Fraade will join us on BEKI [Zoom](#) at 7:30 pm Wednesday, March 22 for a conversation about "Immigration at Our Southern Border: a Lawyer's View on Recent Barriers to Asylum." Previously a fellow in the Avodah Jewish Service Corps, where she worked in Washington, DC, providing legal services to non-citizens in immigration detention, Liora then earned a law degree. Currently a Justice Fellow at the Refugee and Immigrant Center for Education and Legal Services (RAICES) in San Antonio, Texas, Liora represents clients in San Antonio and Laredo in immigration proceedings.



Liora Cohen-Fraade

Passover Schmooze

Beyond the frenzied kitchen work, what is the theological dimension of this holiday? What is the Haggadah about? Join Rabbi Woodward for a schmooze in the library on Saturday, March 25 at 12:45 pm.



Treat Yourself or Someone Else.

THREE 60-MINUTE MESSAGES FOR \$271
(\$21 savings)

The Gift Every Pregnant Person
Wants, Needs and Appreciates.



info@thewellforwomenct.com
(203) 390-5542
www.thewellforwomenct.com
495 Blake St. Suite D. New Haven, CT 06515

BEKI Bulletin



The newsletter is published monthly by Congregation Beth El-Keser Israel for the benefit of its members.

Congregation Beth El-Keser Israel is affiliated with the United Synagogue of Conservative Judaism.

To contribute articles or for inquiries regarding membership:

- Call the Synagogue office: 203.389.2108
- Write: 85 Harrison Street, New Haven, CT 06515-1724
- Email: bulletin@beki.org

- Visit our web page: www.beki.org

• Follow us on social media:  

- For advertising information, call the synagogue office.

Deadline for submission of ads or articles is the first of the month preceding publication.

Annual subscription is \$36

BEKI Bulletin © 2023 Congregation Beth El-Keser Israel.

Editor

Rachel Bashevkin

Associate Editors

Donna Levine, Donna Kemper

Layout & Design

Alice Kosowsky, Bruce Oren

Board of Directors

If you have questions or concerns, please speak with a Board member.

- Rachel Bashevkin (president) president@beki.org
- Jennifer Myer (vice-president)
- David Levy (vice-president)
- Steve Rudof (treasurer)
- Donna Levine (secretary)
- Murray Akresh
- Harold Birn

- Rachel Dofit
- Eric Dunsker
- Russell Epstein
- Jonathan Freiman
- Mimi Glenn
- Michael Hurwitz
- Yaron Lew
- Sam Purdy
- Jonathan Rohner
- Tamara Schechter
- Rob Schonberger
- Jay Sokolow
- Evan Wyner



BEKI STAINED GLASS WINDOW DESIGN BY CYNTHIA BETH RUBIN

REDESIGN MOVING FORWARD

At this writing in early February, the Sanctuary Redesign Committee is close to approving a revised conceptual design. If all goes well, the revised project will go out to bid this summer. Construction, we hope, will begin after the fall holidays.

The project will be less ambitious but should still achieve the congregation's priorities within our limited budget. Since most elements of the project are essential, reducing the project scope and cost largely comes down to limiting the aesthetic improvements.

The revised design will include a new, beautiful, accessible ark and bimah. It will include better lighting (natural and artificial), improved climate control, better acoustics, flexible seating, more energy-efficient windows, and an astoundingly expensive new movable wall separating the sanctuary from the social hall.

The new design will not include the previously proposed large new windows on the courtyard side of the sanctuary. The cinder block walls will remain, cleaner but unadorned by granite or wood panels. No wooden louvers will grace the sunny Whalley-side windows.

The Committee will present the new conceptual design

to the congregation once we've given it final approval. Also at that time, architect Michael Goldblum will begin drawing up construction documents — a months-long process — before soliciting bids.

In the meantime, the Sanctuary Redesign Art Subcommittee will be talking with artists about the design of the ark, its doors and/or curtains, and the surrounding areas.

Also in the interim, a contractor will perform the first phase of HVAC work: refurbishing, repairing, and rebalancing the existing equipment that heats and cools the sanctuary. This work should reduce some of the system noise, allow fresh air into the sanctuary, and perhaps improve efficiency.

Another interim activity is that of the fundraising committee, working hard to pay for this project. If you have not yet donated, please pledge as much as you can. If you have already given, thank you! Please consider digging a little deeper to fund this investment in BEKI's future.

Questions or comments about the sanctuary redesign? sanctuaryredesign@beki.org

Fundraising questions? Contact Murray Akresh (makresh@aol.com) or John Weiser (johnw@bwbsolutions.com)

Eleanor Blessing Bat Mitzvah

The Bat Mitzvah of Eleanor Blessing, child of Marcelle and Jonathan Blessing, will be celebrated on Shabbat Parah, Saturday, March 11, *parashat Ki Tissa*. The



congregation is invited to attend. Kiddush lunch sponsored by Marcelle and Jonathan Blessing will follow. Eleanor, who is a 7th grader at Ezra Academy, loves to play volleyball, roller skate, read and collect Japanese manga, and eat extremely spicy food. Eleanor also loves Camp Ramah and can't wait to get back to Palmer every summer!

Can You Provide a Meal?

BEKI uses the platform Lotsa Helping Hands to support families with new babies. You can prepare and deliver the dinner or arrange delivery from a restaurant. Anything you need to know—how many people to feed; vegetarian, kashrut or allergy specifications; address and time for delivery—is provided. Just [log in](#) and choose your password. When a new baby arrives in our community, you'll receive an email with a link to Lotsa Helping Hands. If you have questions, consult rachel.d.greenberg@gmail.com.

Now Officially Members

Steve Jacobs, Rosie (Rienecker) Jacobs and Teddy

Weekly Parashah

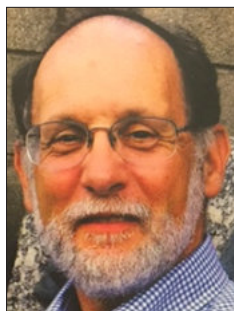
Join Rabbi Woodward for a discussion of the week's Torah portion on Thursdays 9-9:45 am in the library, following 8:15 am minyan.

Talmud Shabbat Chapter 2

On Select Sundays from 10 to 11 am (when BINA meets), Rabbi Woodward leads in-person study of Chapter 2 Tractate Shabbat. Prior study of Jewish texts is not required.

Prayer and Liturgy

On Wednesday, March 15 at 7:30 pm via a special Zoom [link](#), you are invited to Prayer and Liturgy with Rabbi Carl Astor, a discussion about the language, historical context, and meaning of our prayers.



Carl Astor

Pride Shabbat

BEKI's annual Pride Shabbat will be on Saturday, June 17. Save the date, and feel free to

invite friends. Want to help sponsor Pride Kiddush? Please contact Rebecca Weiner at rhweiner@sbcglobal.net.

Making a Minyan and Torah Reading

To make sure we have a minyan consistently, please use [Minyan Maker](#). Up top, you choose which weekday service you are planning to attend (morning or afternoon). Then find your name below and choose "I'll be there." If your name does not appear on the list, just email ritualcoordinator@beki.org.

If you are able to read an aliyah of Torah, make your selection via our online [spreadsheet](#). Just scroll down to the proper date to see details about each aliyah. If you have questions, please consult Rachel Adelstein at ritualcoordinator@beki.org.

Conservative Judaism

Join Rabbi Woodward Thursdays at 7 pm on BEKI [Zoom](#) for an examination of the philosophy, theology, and history of Conservative Judaism. Readings are distributed in advance.

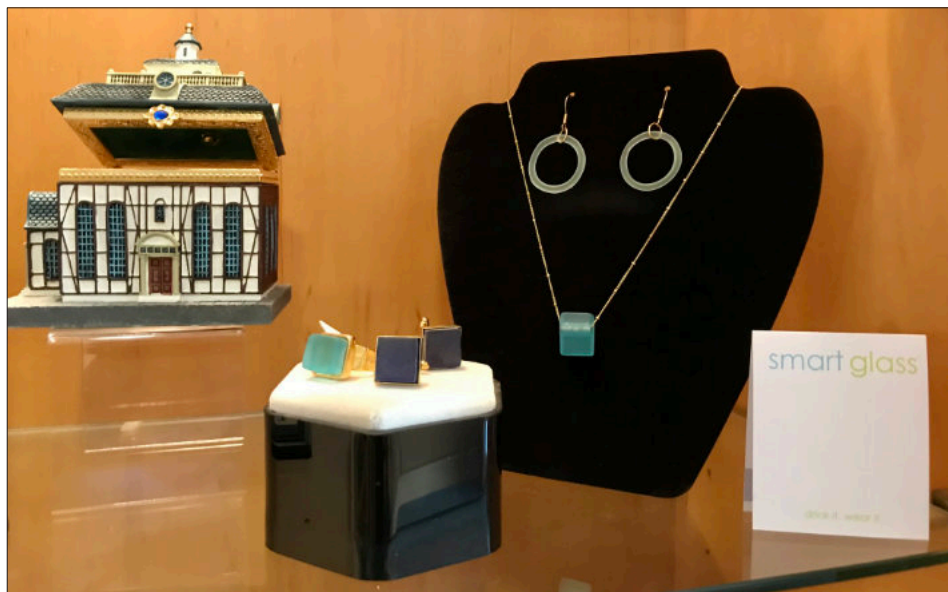
Giftshop

Purim at the Giftshop

Celebrate Purim with some holiday barware. We have a selection of shot glasses and larger glasses to bring some whimsy to your Purim celebrations. As always, we have a wonderful selection of Purim story books for children and cookbooks for hamantaschen.

We're having a big jewelry sale, with 25% off all jewelry (except for New Bead Designs). Shop early for Mother's Day! Buy something nice for someone you love.

The Giftshop is open by appointment every day except Shabbat, and usually at the time of minyanim and religious school. Email us at giftshop@beki.org or text Karen 203.430.2182 or Harriet 203.675.8607. Follow us on Instagram [@bekijudaicagifts](#)



New Songleader Joins BINA



BINA's new music education director, Rachel Beaver, leads students in song at the children's Tu Bishvat celebration

BINA has hired a music education director, Rachel Beaver. She is a Masters of Arts in Religion student at Yale Divinity School and a gifted guitarist and singer. In her role at BINA, she will bring music to students at Tefillah, in their classrooms, and at special holiday events. For Tu Bishvat, she taught songs about trees and our connection to nature, including the summer camp favorite "Adamah V'Shamayim."

Everyone at BEKI is welcome to sing along with Rachel and her guitar at BINA Tefillah services, which are the weekday minyanim on Wednesdays at 5:45 pm and Sundays at 9 am.

Children Celebrate Purim

On Monday afternoon and evening, March 6, all kids are invited to celebrate Purim at BEKI. Special kids' programming, including a light dinner, will run from 4 to 6 pm. At 6 pm, children will join a costume parade into the main sanctuary to join the whole congregation for the Megillah reading.

4-5 pm: Children's Purim program

5-6 pm: Children's light dinner and games (outdoors, weather permitting)

6-7 pm: Costume parade into sanctuary and community Megillah reading

There will be no BINA on Wednesday, March 8. All BINA students are encouraged to come to BEKI on March 6 instead.

Tu Bishvat Celebration

BINA's Tu Bishvat celebration included more than music. Students also learned about (and tasted) the different kinds of fruits that you eat at a Tu Bishvat Seder. They planted pots of parsley to take home. If properly watered and cared for, the plants should grow sprigs of parsley to enjoy as karpas at the Pesach Seder.

BINA Shabbat Led by 4th-6th Graders

Join us on Shabbat morning, March 25 for BINA Shabbat. The service in the main sanctuary will feature a d'var Torah from Education Director Annie Norman-Schiff and participation by BINA 4th, 5th, and 6th graders, starting around 10:30 am. We hope that the congregation will take this opportunity to get to know our BINA families at Kiddush.

BINA 4th and 5th graders in Morah Tikva's class show off their Tu Bishvat art project, a miniature magic forest of candy based on a popular Israeli children's song about the holiday.



Rabbi's Tzedakah Fund

- To Rabbi Woodward with appreciation for his help by the Weintraub family

Kiddush Fund

- Diane Krevolin, Diane Purvin & Seth Rosenthal and Julie & Sam Katz
- Janis Isenberg, Libby & Mark Abraham and Nicole Korda & Jaime Grutzendler
- Rachel Wizner & Betty Levy
- Shayna Schor & Jonathan Cohen

Chai/Synagogue Fund to support synagogue operations

To Roya Hakakian, Ramin Ahmadi & family with sympathy on the passing of Helen Bokhour by

- The Freiman-Light family
- Ellen Cohen & Steven Fraade
- Dan & Beth Weintraub
- Jessey & Joe Palumbo
- Helen Rosenberg & Keith Richter
- Rabbi Carl & Sharon Astor
- Steve & Rachel Wizner
- Caryl & Michael Klifeld
- David & Darryl Kuperstock
- Stewart Frankel & Joy Kaufman
- Lisa Stanger & Greg Colodner

To David Beckerman with sympathy on the passing of Ruthann Beckerman by

- David & Rayna Belowsky
To Laura Yakerson with sympathy on the passing of Jack Yakerson by

- Steve & Rachel Wizner
To David & Joanne Goldblum with sympathy on the passing of Maxine Goldblum by

- The Avni-Singer family
- Yaron Lew
- Steven & Rachel Wizner
To Sherry Kent in appreciation for her help and guidance by

- Sarah Berry
To BEKI in memory of Maxine Goldblum by

- Laura Goldblum
To Ezra Greenberg & family with sympathy on the passing of Belle Greenberg by

- Dr. Stanley Hersh
To BEKI with thanks by

- Christine Crowder

Yahrzeit Fund to support synagogue operations

In Memory of:

- Jack Yasgar by Howard Yasgar
- Martin Buckman by Ken & Linda Buckman
- Her beloved nephew Stephen Goldberg by Charlotte Koskoff

- Lawrence Moscowitz by Mike Moscowitz
- Rita Moscowitz by Mike Moscowitz
- Rivka Perecman by Shirley & Jay Brodach
- Haie-Bertha Naiman by Polina Naiman
- Julius Brody by Frances Goldberg-Cohen
- Abraham Goldberg by Frances Goldberg-Cohen
- Phyllis Rogoff by Jonathan Eagan
- Reuben Gralla by Linda Schultz & Howard Gralla
- Eleanor Hepler by Linda Schultz & Howard Gralla
- Zelda Rosenbluth by Rick & Lynn Saltz
- Frances Saltz by Rick & Lynn Saltz
- Pearl Weiner by Joanne & Steve Rudof
- Ida Buckman by Ken & Linda Buckman
- Rebecca Yankeloff by Shirley Halprin
- Thelma Chernikoff by Janet Chernikoff
- Anne Schnitman Irwin by Edward & Helene Schnitman Vanderhoef
- Morris Buckman by Ken & Linda Buckman
- Elizabeth Blackmer by Corinne Blackmer & Pilar Stewart
- Lea Nordlicht Shedd by Judith Hoberman
- His father Sidney Yaffe by Cliff Yaffe
- Her parents Edith & Maurice Levy by Paula Rudnick
- Louis Rochlin by Kranie & Earl Baker

News

FILM ON MARCH 1

The film on BEKI [Zoom](#) Wednesday, March 1 at 7:30 pm, which makes a compelling argument that the Jan. 6 attack on the Capitol is part of a pattern of white

supremacy, similar to prior historical events that most of us have never learned about, is narrated by Carol Anderson, the Charles Howard Candler Professor of African American Studies at Emory University. The documentary takes its title from this poem:



Carol Anderson

I, Too by Langston Hughes

I, too, sing America.

I am the darker brother.
They send me to eat in the kitchen
When company comes,
But I laugh,
And eat well,
And grow strong.

Tomorrow,
I'll be at the table

When company comes.
Nobody'll dare
Say to me,
"Eat in the kitchen,"
Then.

Besides,
They'll see how beautiful I am
And be ashamed—

I, too, am America

MICHAEL MARTONE
MANAGER



Arnold's Jewelers

DIAMONDS - WATCHES - GIFTS
CHINA - SILVER - CRYSTAL

WATCH AND
CLOCK REPAIRING

NORTH HAVEN SHOPPING CENTER
NORTH HAVEN, CONN. 06473
203-239-4291



NEW SYLVAN CLEANERS

All Work Done On Premises

Mon.-Fri. 7:00-6:00 | Sat 8:00-4:00 | Sun closed

363 Whalley Ave. New Haven, CT 06511 • 203.562.3460
663 Orange Center Rd. Orange, CT 06477 • 203.795.0087



ROBERT E. SHURE, INC.
FUNERAL HOME

Dedicated to the Dignity and Respect of Tradition

543 George Street, New Haven, CT 06511

Robert E. Shure
Founder

203-562-8244
shurefuneralhome.com

James M. Shure
President

RAVIT AVNI-SINGER, MSW LCSW
CHILD, ADOLESCENT AND ADULT PSYCHOTHERAPY
PARENT CONSULTATION

1 BRADLEY ROAD, SUITE 906
WOODBIDGE, CT 06525

(203) 389-9174
BY APPOINTMENT



40 Boston Post Rd (RT 1)
West Haven CT 06516
203-933-2886

888 Wethersfield Ave
Hartford CT 06114
860-296-9799

www.startireandwheels.com
Andy & Paige Weinstein

NOLAN'S

HAMDEN MONUMENT COMPANY

LICHTENSTEIN COMPANY

323 Washington Ave. Hamden CT 06518

(203) 288-8486

(203) 287-1593

CT toll free only (800) 852-8865

Fax (203) 287-1593

John Nolan

Michael Nolan

nolansmonuments@att.net

Child and Adolescent Health Care, L.L.C.

A. Joseph Avni-Singer, M.D., FAAP

Shari Storeygard, M.D., FAAP

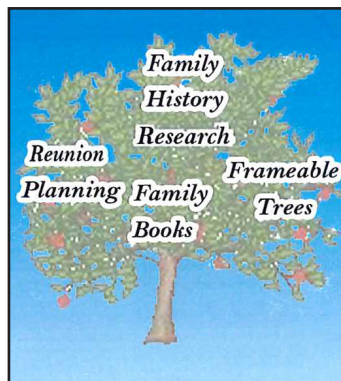
Shannon Martinello, M.D., FAAP

Miranda Bik-Yin Ip, M.D., FAAP

Namita Wijesekera, M.D., FAAP

303 WHITNEY AVENUE
NEW HAVEN, CT 06511
(203) 776-1243
FAX (203) 785-1247

1 BRADLEY ROAD, SUITE 102
WOODBIDGE, CT 06525
(203) 397-1243
FAX (203) 397-1241



Many Generations

Kim Formica
Genealogist

PO Box 1248
Orange, CT 06477
tel. 203/376.8551

kimformica@optonline.com



**Challenging Minds,
Nurturing Hearts**

Grow with us!

Ezra Academy is a preschool through 8th grade Jewish day school offering outstanding academics and a nurturing community, rooted in the Jewish tradition of critical thinking and ethical behavior.



LEARN MORE:
EZRAACADEMYCT.ORG
INFO@EZRAACADEMYCT.ORG

SCHEDULE A TOUR:
EZRAACADEMYCT.ORG/VIRTUAL-TOUR



**EZRA ACADEMY
WELCOMES A WIDE
SPECTRUM OF
RELIGIOUS AND
CULTRAL BELIEFS AND
AFFILIATIONS.**





What will your Jewish legacy be?

Susan Voigt Created a Legacy for Her Synagogue, Congregation Beth El-Keser Israel

"I am excited to leave a two-fold legacy. My greatest legacy is having 3 children and now 7 grandchildren. As the daughter of Holocaust survivors, I can say, 'We live on! We thrive!' My second legacy is to my shul, Congregation Beth El-Keser Israel. I created a legacy for BEKI in my estate plans so that it can continue to be a place for families to learn and grow." —Susan

For more information, contact the Jewish Foundation of Greater New Haven
Lisa Stanger, Executive Director | (203) 387-2424, ext. 382 | lstanger@jewishnewhaven.org
Tamara Schechter, Create a Jewish Legacy Manager | (203) 387-2424, ext. 325 | tschechter@jewishnewhaven.org

GR *Greenberg Rhein & Margolis Inc.*

David B. Margolis, CIC

1768 Litchfield Turnpike (Rte. 69)
Woodbridge CT 06525-2309
Tel: (203) 389-4511 • Direct (203) 907-4829
Fax (203) 397-2266 • Cell: (203) 668-0344
Email: david@grminsurace.com
www.grminsurace.com



Hamden Hall Country Day School

Educating students in
PreSchool through Grade 12.

We celebrated National Mix It Up Day
in October to foster greater respect
and understanding among our students.

www.hamdenhall.org 203.752.2610
1108 Whitney Ave., Hamden, CT 06517

CW *Coachworks*
of West Haven
Auto Body Shop

1058 Orange Avenue • West Haven, CT 06516
Tel: 203.932.1200 Fax: 203.932.1222
Scott Walstedter

**BEKI'S FAVORITE
DJ/MC ENTERTAINMENT**

**CALL CHARLES!!!
203.795.4737**

PURIM AND PESACH, HIDDENNESS AND CLARITY

Purim is coming — and that means only a month until Pesach!

As of this writing (in early February), we haven't had snow, and haven't even had much cold. Today's weather reached into the upper 50s, and it feels like spring.

I find myself experiencing this weather with a mix of emotions. Foreboding — because it seems to indicate the collapse of our planet's climate. But also a sense of enjoyment — because I haven't had to shovel snow or deal with other challenges of winter weather. I've heard many people express the same thing, saying, "I don't know how to feel about this weather. It's pleasant in the short-term, but it's ominous, too."

I think the Purim-Pesach connection can help us shed light on this. Purim occurs one month before Pesach. In fact, in Jewish "leap years," when we add an extra month of Adar (the month of Purim), we make sure that Purim takes place in the second month of Adar so it will be one month before Pesach. In the Megillah that contains the story of Esther, we read that it was on the 13th day of the first month — that is, the day before Erev Pesach — that Haman declared his genocidal intentions toward the Jews.

There are a lot of conscious connections between the holidays, but their stories are different. On Pesach, God acts

with great miracles, signs, and wonders, specifically to show that God cares about human welfare and human history. On Purim, if God acts at all in the story, it is only behind the scenes. On Pesach, we celebrate with joy and fun, but we also think carefully about our behavior, our chametz. On Purim, we celebrate with reckless abandon, masking ourselves, but also dancing on the edge of a cliff, aware of the frailty of life.

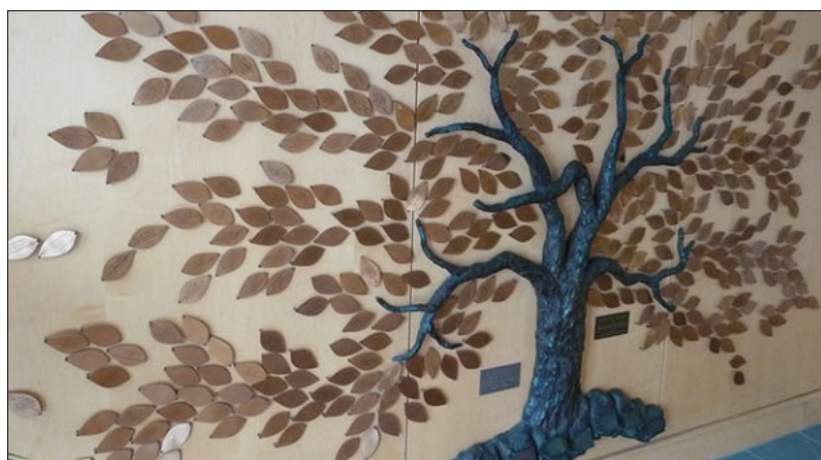
I think these two impulses — the sense that there is a moral arc to the universe that bends toward justice (Pesach) and the sense that we live precipitously close to chaos (Purim) — are necessary companions of each other. We have to temper our feelings; we have to look at life as complex and remember that things are never going in only one direction.

Let's get back to the weather. The Pesach approach might say: look at the arc of our planet's environment — it seems to bend toward climate catastrophe. The Purim approach might say: look at the surprises and overturnings that humans are capable of; they might not be obvious because they are masked, but below the surface, there may yet be reason to celebrate. Perhaps we are facing this challenge precisely as we need to.

Sometimes embrace one approach; sometimes embrace the other. Sometimes believe in hidden redemptions; sometimes believe in explicit arcs. But most of all, find a sense of loving balance and care in this world.



Eric Woodward



Tree of Life Awaits Your Leaf

The Tree of Life at the entrance to BEKI is a collection of golden leaves that honor people and moments in our lives. For \$118 you can add a leaf. Contact Marjorie Wiener at 203.387.6278 or marjoriewiener@yahoo.com

March 2023

8 Adar 5783 - 9 Nisan 5783

Sunday	Monday	Tuesday	Wednesday	Thursday	Friday	Saturday
Mark Your Calendar Apr. 5 First Seder Apr. 18 Yom HaShoah Apr. 22 Jesse Mattison b'mitzvah May 8 Erev Lag BaOmer May 25 Erev Shavuot June 3 Samuel Aaron Werlin b'mitzvah June 14 BEKI Annual Meeting			1 Deadline to order Shalach Manot Bags 7am In-person & Zoom Service 4pm BINA 5:45pm In-person & Zoom Service 7:30pm "I, Too" documentary screening & conversation w/the producer (ZOOM)	2 8:15am In-person & Zoom Service 9am Torah Study 5:45pm In-person & Zoom Service 7pm Philosophy & History of Conservative Judaism w/Rabbi Woodward (Zoom)	3 7am In-person & Zoom Service 5:26pm Candle Lighting 6pm First Friday Kabbalat Shabbat	4 9:15am Shabbat Service (Sanctuary, in-person) 11am Children's Havura, K-2 Kehila, Jr. Congregation 12:45pm Theology of Purim-Schmooze w/Rabbi Woodward (in-person)
			8 Adar	9 Adar	10 Adar	11 Adar
5 9am BINA 9am In-person & Zoom Service 10am Babylonian Talmud Shabbat Chapter 2 Study w/Rabbi Woodward (in-person, RSVP requested) 12pm Artist's Talk w/Cynthia Rubin 5:45pm In-person & Zoom Service	6 Fast of Esther 7am In-person & Zoom Service 4pm BINA Children's Purim Program 5:45pm In-person & Zoom Minchah 6pm Maariv & Megillah Reading (Sanctuary & Zoom)	7 Purim 7am Shacharit & Megillah Reading (Chapel & Zoom) 5pm In-person & Zoom Service	8 Shushan Purim No BINA 7am In-person & Zoom Service 5:45pm In-person & Zoom Service	9 8:15am In-person & Zoom Service 9am Torah Study 5:45pm In-person & Zoom Service Philosophy & History of Conservative Judaism w/Rabbi Woodward (Zoom)	10 7am In-person & Zoom Service 5:34pm Candle Lighting 6pm Kabbalat Shabbat	11 Eleanor Blessing Bat Mitzvah 9:15am Shabbat Service (Sanctuary, in-person) 11am Children's Havura, K-2 Kehila, Jr. Congregation
12 Adar	13 Adar	14 Adar	15 Adar	16 Adar	17 Adar	18 Adar
12 9am BINA 9am In-person & Zoom Service 10am Babylonian Talmud Shabbat Chapter 2 Study w/Rabbi Woodward (in-person, RSVP requested) 5:45pm In-person & Zoom Service	13 7am In-person & Zoom Service 5:45pm In-person & Zoom Service 7pm General Board Meeting (online)	14 7am In-person & Zoom Service 5:45pm In-person & Zoom Service	15 7am In-person & Zoom Service No BINA 5:45pm In-person & Zoom Service 7:30pm Prayer & Liturgy at BEKI w/Rabbi Astor (special Zoom link)	16 8:15am In-person & Zoom Service 9am Torah Study 5:45pm In-person & Zoom Service 7pm Philosophy & History of Conservative Judaism w/Rabbi Woodward (Zoom)	17 7am In-person & Zoom Service 6pm Kabbalat Shabbat 6:42pm Candle Lighting	18 9:15am Shabbat Service (Sanctuary, in-person) 11am Children's Havura, K-2 Kehila, Jr. Congregation
19 Adar	20 Adar	21 Adar	22 Adar	23 Adar	24 Adar	25 Adar
19 No BINA 9am In-person & Zoom Service 5:45pm In-person & Zoom Service	20 7am In-person & Zoom Service 5:45pm In-person & Zoom Service 7:30pm Sanctuary Redesign Congregational Zoom Meeting	21 7am In-person & Zoom Service 5:45pm In-person & Zoom Service	22 7am In-person & Zoom Service 4pm BINA 5:45pm In-person & Zoom Service 7:30pm Zoom Schmooze about Refugees w/Liora Cohen-Fraade	23 Rosh Hodesh 8:15am In-person & Zoom Service 9am Torah Study 5:45pm In-person & Zoom Service 7pm Philosophy & History of Conservative Judaism w/Rabbi Woodward (Zoom)	24 7am In-person & Zoom Service 6pm Kabbalat Shabbat 6:49pm Candle Lighting	25 BINA Shabbat 9:15am Shabbat Service (Sanctuary, in-person) 11am Children's Havura, K-2 Kehila, Jr. Congregation 12:45pm Theology of Passover w/Rabbi Woodward (in-person)
26 Adar	27 Adar	28 Adar	29 Adar	1 Nisan	2 Nisan	3 Nisan
26 No BINA 9am In-person & Zoom Service 5:45pm In-person & Zoom Service	27 7am In-person & Zoom Service 5:45pm In-person & Zoom Service 7pm Learning New Shabbat Morning Melodies 7:30pm Executive Board Meeting (online)	28 7am In-person & Zoom Service 5:45pm In-person & Zoom Service	29 7am In-person & Zoom Service 4pm BINA 5:45pm In-person & Zoom Service	30 8:15am In-person & Zoom Service 9am Torah Study 5:45pm In-person & Zoom Service 7pm Philosophy & History of Conservative Judaism w/Rabbi Woodward (Zoom)	31 7am In-person & Zoom Service 6pm Kabbalat Shabbat 6:57pm Candle Lighting	
4 Nisan	5 Nisan	6 Nisan	7 Nisan	8 Nisan	9 Nisan	

BEKI Events

Service Times

Sundays	Mondays	Tuesdays	Wednesdays	Thursdays	Fridays	Saturdays
9am Shaharit 5:45pm Maariv	7am Shaharit 5:45pm Maariv	7am Shaharit 5:45pm Maariv	7 am Shaharit 5:45pm Maariv	8:15am Shaharit 5:45pm Maariv	7 am Shaharit 6 pm Kabbalat Shab-	bat 9:15am Shaharit

Easy Fundraiser

The Stop & Shop gift cards sold by the BEKI office are debit cards for groceries or gasoline. This is an on-going fundraiser that costs you nothing. Contact Peggy office@beki.org to arrange pickup.

Advertise in the Bulletin

Would you like your ad here in the coming year? Each month, the BEKI bulletin reaches over 700 households, most of them in the New Haven area. Check with Peggy in the BEKI office about our variety of ad rates.

Join BEKI on Facebook

Everyone is encouraged to join the [BEKI Facebook group](#). You'll enjoy the humor, community information, and links to cultural opportunities. You'll want to choose the private group with the stained-glass window image. Just ask to join. (The BEKI page with the hamsa is the public-facing page, which has few postings).

Donate Online

Fast and easy at
www.beki.org/give

E-Statements

Due to rising costs and BEKI's efforts to be more Earth-friendly, we have transitioned to e-statements and e-yahrzeits. If you prefer to receive them by paper, please contact the BEKI office at office@beki.org or 203-389-2108 x114. The BEKI Green Team supports BEKI's movement toward paperless communications and hopes the community will also.

Services

All services are also available on Zoom except Friday night and Saturday morning.

Sunday 9 am	Wednesday 7 am
Sunday 5:45 pm	Wednesday 5:45 pm
Monday 7 am	Thursday 8:15 am
Monday 5:45 pm	Thursday 5:45 pm
Tuesday 7 am	Friday 7 am
Tuesday 5:45 pm	Friday 6 pm
	Saturday 9:15 am

For the latest information on services, check [Happenings](#) or email bekitefilla@gmail.com