



RABBI'S
RITUAL
CORNER



See story, Page 9

HIGH HOLY DAYS ARRIVE

Help Greet

Co-chairs Rebecca Weiner and Rob Lettick are looking for greeters for the High Holy Days. If you have volunteered previously, many thanks; they will be in touch regarding scheduling. If you are new to greeting and are able to help, please contact Rebecca (weinerh@gmail.com) or Robert (robolettick@aol.com) to join the team. So that we can accommodate everyone's schedule, there will be three training sessions—Tuesday, Aug. 29 at 6:15 pm, Sunday, Sept. 10 at 4:30 pm, and Monday, Sept. 11 at 6:15 pm—but if you cannot make a session, we will accommodate you. Please consider coming/staying till 5:45 to also attend minyan.

New Year Meditation

Again this year, Robin Goldberg will offer a meditation program after Kiddush lunch on Saturday, Sept. 9. A BEKI member, Robin is a certified instructor of Heart Rhythm Meditation. Join us in the BEKI library at 12:45 pm; no special clothing or equipment is required; everyone will sit in chairs; no prior meditation experience is necessary.



Robin Goldberg

Selichot

This year's Selichot program, on Saturday, Sept. 9, will start with 7 pm Minchah, followed by Seudah Shlisheet (a light meal), a short study session about Aleinu with Rachel Adelstein prior to Maariv and a musical Havdalah, with Selichot penitential prayers led by Isaiah Cooper at 8:30 pm.

Order Your Lulav & Etrog

If you want to buy a set for Sukkot, we have 40 sets available. To place an order, contact the BEKI office at office@beki.org or 203.389.2108 x114 by Sunday, Sept. 10. Reserve early to be sure you have your lulav and etrog. When you order, please say your name and how many sets you want. The cost remains \$40 per set. Pickup will be from the BEKI office after Yom Kippur.

Operation Isaiah

As in previous years, BEKI will collect non-perishable food items for the Jewish Family Services Food Pantry. Bags will be distributed at Rosh Hashanah to fill and return. If you don't want to schlep your bag back to BEKI, another option is to provide cash, and BEKI will purchase grocery gift cards for the Pantry. You may send a check to the BEKI office tagged for Operation Isaiah or ask Peggy to bill your BEKI account. The drive will extend through Sukkot.

Back to Shul Day

On Sunday, Sept. 10, from 10 am to noon, join us for our annual preparations for the holidays, as we change out prayer books, change Torah covers, polish the Torah silver, and garden.



Treat Yourself or Someone Else.

THREE 60-MINUTE MESSAGES FOR \$271
(\$21 savings)

The Gift Every Pregnant Person
Wants, Needs and Appreciates.



info@thewellforwomenct.com
(203) 390-5542

www.thewellforwomenct.com

495 Blake St. Suite D. New Haven, CT 06515



BEKI Bulletin

The newsletter is published monthly by Congregation Beth El-Keser Israel for the benefit of its members.

Congregation Beth El-Keser Israel is affiliated with the United Synagogue of Conservative Judaism.

To contribute articles or for inquiries regarding membership:

- Call the Synagogue office: 203.389.2108
- Write: 85 Harrison Street, New Haven, CT 06515-1724
- Email: bulletin@beki.org
- Visit our web page: www.beki.org

- Follow us on social media:  
- For advertising information, call the synagogue office.

Deadline for submission of ads or articles is the first of the month preceding publication.

Annual subscription is \$36

BEKI Bulletin © 2023 Congregation Beth El-Keser Israel.

Editor

Rachel Bashevkin

Associate Editors

Donna Levine, Donna Kemper

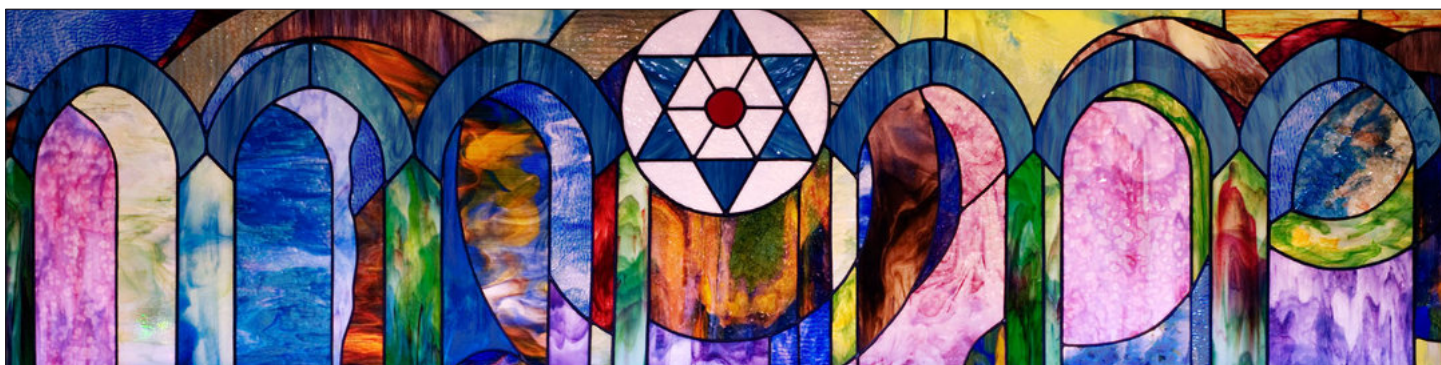
David Spitzer

Board of Directors

If you have questions or concerns, please speak with a Board member.

- Rachel Bashevkin (president) president@beki.org
- Jennifer Myer (vice-president)
- David Levy (vice-president)
- Steve Rudof (treasurer)
- Donna Levine (secretary)
- Murray Akresh
- Harold Birn

- Rachel Doft
- Eric Dunsker
- Russell Epstein
- Mimi Glenn
- Michael Hurwitz
- Yaron Lew
- Sam Purdy
- Jonathan Rohner
- Tamara Schechter
- Rob Schonberger
- Jay Sokolow
- Evan Wyner



BEKI STAINED GLASS WINDOW DESIGN BY CYNTHIA BETH RUBIN

High Holy Days

Continued from **Page 1**

High Holy Day services

Entry again this year will be ticketless for members, with the greeters confirming admission using a list at the doorway.

Members are asked to pay at least a third of the annual dues prior to the High Holy Days, as has been the custom in years past. This allows BEKI to meet our financial obligations. If you need accommodation or abatement, please be in touch with Steve Rudof. Members with questions as to their standing should inquire with the office.



Guests and visitors are most welcome, but all adults require reservations for most services. Active-duty military, police personnel, and full-time students may enter with valid official ID; however, *advance arrangements are required*.

To be included on our non-member/guest list, please make arrangements with our office before Sunday, Sept. 10. Email office@beki.org or call 203.389.2108 x114. Tickets for immediate family start at just \$36 and for guests at \$150.

Children accompanied by their adults are always welcome to join us. Children's programs will be offered both days of Rosh Hashanah and on Yom Kippur at 10:45 am (prayer) and noon (activity). Details on page 7.

Rosh Hashanah Services

Friday, Sept. 15

Erev Rosh Hashanah service, 6:00 pm

Saturday, Sept. 16

Rosh Hashanah Day 1 service, 9:15 am

Sunday, Sept. 17

Rosh Hashanah Day 2 service, 9:15 am

Casting Off Our Sins

BEKI's popular Tashlich, a brief ceremony suitable for all ages, will be held—rain or shine—on Sunday, Sept. 17 at 4 pm at two outdoor locations: the Edgewood Bridge and the Whitney Museum Covered Bridge. Friends and neighbors are welcome to join us; no reservations are needed. Our Minchah service will follow at the Edgewood Bridge. (There will be no Minchah at BEKI that day.)

Kever Avot Services

Rabbi Woodward will lead a brief community memorial service on Sunday, Sept. 24 at the Warner Street cemetery in Hamden at 10 am and at the Farwell Street cemetery in West Haven at 11 am.

We Build the Sukkah

We need assistance with the first stage of building the BEKI sukkah on Sunday, Sept. 24, at 9:30 am, following services, and then sukkah completion work on Wednesday, Sept. 27 at 4 pm. The "solemn day of disassembly" will be Sunday, Oct. 15 at 9:30 am, following services. Please email Roger Colten at r_colten@yahoo.com to let him know which day you can help. Carpentry skills are *not* required!

Consult the October bulletin for details about BEKI's Sukkah parties. First Day Sukkot services will be Saturday, Sept. 30 at 9:15 am.

Yom Kippur Services

Sunday, Sept. 24

Erev Yom Kippur service 6:30 pm

Monday, Sept. 25

Yom Kippur service 9:00 am

Minchah 5 pm

Neilah 6:15 pm

Havdalah 7:25 pm

Yom Kippur Study Sessions



Steven Fraade



Rachel Adelstein

Steven Fraade will teach the first session, at 3 pm, about teshuvah. At 3:45 pm Rachel Adelstein will focus on the musicality of High Holy Day services.

Break-Fast

Following the Neilah service on Yom Kippur, members and all who have pre-arranged to join us for the High Holy Days are invited to break the fast communally in the downstairs social hall.

Introducing Our Newest Members

Now that BEKI has grown to over 300 member units, we want to introduce you to the people who have joined in the last year. Here is the next installment of introductions, written by our members themselves. If you are a new member and have not replied to the query questions, please send your responses to bulletin@beki.org so that we can include them in the next issue.

Elana Bildner & Benjamin Israelow, Noam and Archie

We are Ben, Elana, Noam (5) and Archie (2), and we live in New Haven. Our favorite part of being Jewish is Shabbat!

We both come from families with a lot of Jewish involvement (Jewish camps, Jewish organizations, Jewish schools, Jewish institutions). While living in NYC for many years, we became members of Lab/Shul, a New York City-based post-denominational congregation. We are still members but wanted a home base closer to home. Elana went to BEKI as an undergrad, and many of our friends are members. We are hoping to connect with other young families trying to get out of the house :)



Archie and Noam Israelow

Shirley & Jay Brodach

We have been living in Cheshire the past 36 years. We were formally members of Temple B'nai Abraham in Meriden until they merged with Adath Israel in Middletown. However, we have always been connected to the New Haven community and decided to join BEKI.

Karen Elimelech

I live in West Haven, though I lived in Woodbridge from 1998 till 2014. A bucket list item is to once again attend a professional football game! I grew up in the Philadelphia area and I am a huge Eagles fan. Fly Eagles fly! If I could share a hobby, with someone, it



would be going to concerts. For me the best therapy in the world is live music—but good live music with lyrics that mean something. I'm old-school...

I am re-joining BEKI with hopes of reconnecting with my Jewish roots, meeting new people, and hopefully making some new friends.

Connie & Kelin Gersick

This is the third time Connie and I have lived in New Haven, wrapped around Cambridge, Massachusetts and 15 years in southern California. We've been here this time since 2000, very much by choice (Santa Monica and Malibu were definitely not us). Both of us are mostly-retired academics, Connie from the UCLA school of management, and Kelin from various psychology appointments and his own consulting firm, but we still are connected to Yale as Fellows and advisors.



Continued on **Page 5**

New Members

Continued from **Page 4**

We always heard great things about the community at BEKI, but until this year we were mostly non-involved members of a Reform synagogue in Hamden. When our daughter's family joined BEKI, we followed, and we're very glad we did. This congregation—the music, the family focus, the very engaging and thought-provoking Rabbi—is like an updated (and better) version of the Jewish Center that our families were a part of growing up in Rock Island, Illinois. We look forward to meeting many of the community and gradually finding our niche here—and thanks to everyone who has been so welcoming so far!

Laura Glesby

Thank you all for welcoming me into your community! I live in New Haven and work here as a local journalist. One of my favorite components of Judaism is our tradition of collectively re-reading and analyzing texts that have survived so many generations. I'd love to connect with other members who enjoy Jewish singing and wandering through New Haven's beautiful parks and bookstores. I also enjoy making new animal friends and have a sweet cat named Ruby, who'll be almost as excited to meet more BEKI community members as I am.



Anna & Clifford Merin and William

We (Anna, Clifford, and our baby boy William) live in Madison and love the beauty of the Connecticut shoreline. After attending multiple high holy day services with friends at BEKI, we are grateful and excited to join as members. We have felt so welcomed already after the birth of our son, as members have dropped off delicious meals. In our pre-baby life, we enjoy spending time at Hammonasset beach, visiting vineyards, cooking together, and eating delicious foods.



What drew us to BEKI is the warmth of the community that immerses itself in both Jewish culture and togetherness. We are thrilled to become members of such a wonderful congregation.

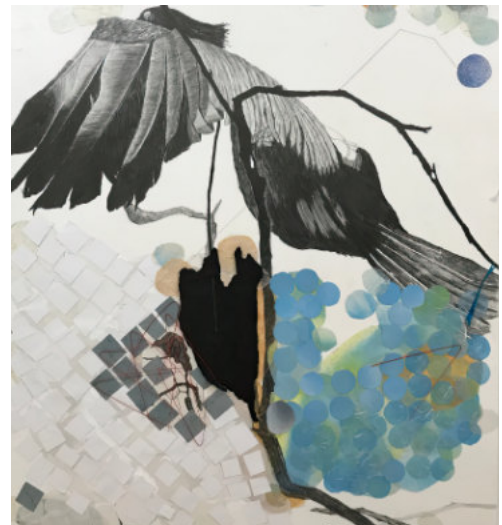
Our favorite part of being Jewish is the community and culture it creates wherever anyone may be in the world.

Closing Reception and Portfolio Sale

Join us on Sunday, Sept. 3 for a closing reception and portfolio sale at the close of the exhibition "Four Stops Along an Artistic Path" by Anna Broell Bresnick.

The artist will be present from noon to 2 pm, followed by the de-install of the exhibition. She will bring some additional works on paper for you to consider taking home. Come chat with the artist, with the option to help take down and wrap the work.

Anna Broell Bresnick, Heart of Darkness 2018; graphite, spray paint, rice paper, tar paper, plastic elements, collage on museum board 34"x32"



New Members

New Members

Continued from Page 5

Jason & Arielle Rubenstein and Raphael, Elijah, Chava



We arrived in East Rock five years ago, and are so happy to be making BEKI one of our homes here. Judaism is at the center of our family—we met at Hillel as undergraduates, and Jason is a rabbi at Slifka—and have been looking for a family-focused Jewish community ever since we arrived (COVID put this search, like almost everything else, on hold). Learning, community, and shared time are the central things we love about Judaism. Our main hobbies are knitting and singing (Arielle), cycling and reading (Jason), and chess and minecraft (Raphael). Elijah and Chava haven't yet gelled in hobbies, though Elijah does love the BEKI children's choir something fierce.



Eric & Emily Weinstein, Lily and Ruthie

Hello, we are the Weinstein family, Eric, Emily, Lily (5) and Ruthie (2), from North Haven.

Our favorite things about being Jewish are bagels and deli—as well as lighting Shabbat candles together as a family and making challah for Shabbat.

Eric enjoys brewing beer at home and Emily is an avid reader. Lily and Ruthie love Bluey and the princesses from *Frozen*.

Eric and Emily have attended high holy day services at BEKI since moving to the community in 2018 and finally made the leap to officially join as members.

We both grew up in Conservative households and have been on the path to find the right synagogue for our young family.

Gallery News

High Holy Day Exhibit

“Off Our Walls,” an exhibition of art from BEKI homes, will be on display from Labor Day weekend through October.

Wall Art During Construction

During the post-High Holy Day sanctuary renovation period, the Art Committee plans to fill the walls of the upstairs gallery areas with posters and other art reproductions. Framed posters behind glass or plexiglass are preferred. Donations should be imagery which is synagogue friendly. Questions? Write to art@beki.org

Youth Programs in September

BY ANNIE NORMAN-SCHIFF, EDUCATION DIRECTOR

High Holy Days for Children at BEKI

The High Holy Days at BEKI this year will once again offer a rich and meaningful experience for children. For both days of Rosh Hashanah as well as for Yom Kippur, our volunteer service leaders will share engaging services and activities, for kids of all ages.

Each day of the holidays will feature services for three age groups—the same groups that meet every Shabbat morning. **Children's Havura** is for children from birth to age 4. **K-2 Kehila** welcomes kindergarten through 2nd grade. And **Junior Congregation** is for the oldest kids, 3rd-6th grades.

Each age group will gather for **tefilah** (prayers) in a first session at 10:45 am. There will be a snack break at 11:30 am. Then, everyone will return to their groups for a creative **activity** at noon.

We are so grateful for the volunteers, both parents and other community members, who lead our High Holiday programming for children! From teaching the sounds of the shofar to leading a game of pin-the-sin-on-the-scapegoat, our leaders make Rosh Hashanah and Yom Kippur come alive for every child.

High Holiday Children's Program Schedule

Saturday, Sept. 16 Rosh Hashanah Day 1

10:45 am (Session 1, Tefilah)

11:30 am (Snack)

12:00 pm (Session 2, Activity)

Sunday, Sept. 17 Rosh Hashanah Day 2

10:45 am (Session 1, Tefilah)

11:30 am (Snack)

12:00 pm (Session 2, Activity)

Monday, Sept. 25 Yom Kippur

10:45 am (Session 1, Tefilah)

11:30 am (Snack)

12:00 pm (Session 2, Activity)

Kadima Reverse Tashlich

Don't forget about the return of this favorite event for Kadima, our 4th-8th grade youth group, before Rosh Hashanah.

Big kids and tweens are invited to get their hands dirty for a good cause, as we do a "reverse" version of the Rosh Hashanah Tashlich ritual, **Sunday, September 10, 12:30-2 pm**. Instead of throwing breadcrumbs into a river, we'll be taking litter out. Join us by the West Rock Playground, just over the bridge from the BEKI parking lot. Or BINA students can walk over from BEKI

as a group directly after religious school. Dress in clothes that can get messy; gloves and pickup tools will be provided.

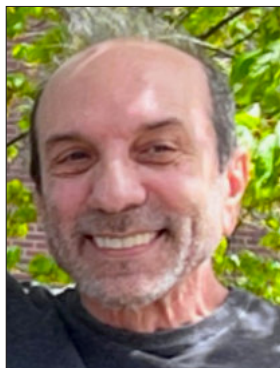


Education Director Annie Norman-Schiff visited BEKI's older kids at Camp Ramah's first session: left to right standing: Eleanor Blessing, Education Director Annie Norman-Schiff, Counselor Aaron Bruce. Left to right sitting: Shai Hurwitz, Zoe Katz, Esther Marx Schonberger, Jacob Marx Schonberger.

Submit Your Photo

Please submit your jpg photos—at least 500KB—for the BEKI Directory. Just email the file to directory@beki.org.

Or take your family photo at BEKI. Book your session with Helene Sapadin, 203.685.2487 or hsapadin@yahoo.com.



Bruce Oren

Bruce Oren is taking photos in a studio at BEKI on Sundays, starting at 12 noon.

After the photoshoot, Bruce will email you the digital images so you can select one, but then have all of them for your personal use, entirely free of charge.

Mazal Tov to

Ben Cherry, Rachel Katz, and big brother Mark on the birth of Lilah Beatrice

Welcome New & Returning Members

Eric & Emily Weinstein, Lily and Ruthie

Ben Cherry & Rachel Katz and Mark

Karen Elimelech

Rachel Scheinerman & Mordechai Levy-Eichel, Shlomit, Gershom, and Zev

Saul Siller

Prize this month is a mug

Within this bulletin, there's a Prize Code. If you are one of the first 5 people to email it to bulletin@beki.org, you will win a BEKI coffee mug. Trezlen Drake, Herbie Rosen, and Jennifer Gelband were the August winners.

Sisterhood

Joining BEKI Sisterhood

By MIMI GLENN, PRESIDENT OF SISTERHOOD

Every Conservative Jewish woman has the opportunity to be a link in the worldwide network of women engaged in Jewish life and committed to enhance their Jewish knowledge, expanding their involvement in their communities, and supporting klal Yisrael, the entire Jewish people.

Women's League for Conservative Judaism encourages and guides its members to support those in need with programs such as community service campaigns, domestic abuse prevention programs, and holiday packages for our youth away in schools. Your Women's League for Conservative Judaism membership provides access to their fabulous programming and web site, wlcj.org.

Becoming a member of BEKI Sisterhood supports the Women's League Torah Fund campaign, benefiting the Jewish Theological Seminary and other Conservative/Masorti learning centers around the world, all vital for the education of future rabbis, cantors, educators, scholars, leaders and innovators of the Movement. Your membership dues of \$25 for the year, which include \$15 to Women's League, literally keep the lights on.

We look forward to working with you in our efforts to maintain and grow our beloved BEKI. For more information in joining BEKI Sisterhood, please contact Mimi Glenn mimiglenn1@hotmail.com. More information will be forthcoming in the mail.

On behalf of the Sisterhood board, I would like to extend to all our congregants a Shanah Tovah Umetookah, a Happy and Healthy New Year.

Rosh Hashanah Gifts

Your Sisterhood store is prepared to help you celebrate. Honey? We have it sourced locally for you. Honey bowls? We have them too. Beautiful candles and candlesticks. Rosh Hashanah toys and books for the kids.

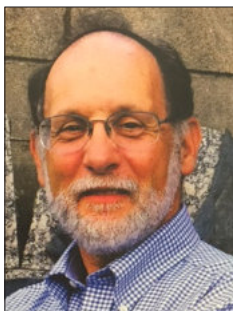
And, if you missed your neighborhood white sale, consider a kittel for Yom Kippur: they are white, easy-on/off, sized (s,m,l,xl), washable, with cost as low as \$50-60.

Call/email/come shop around minyanim: Karen and Harriet Giftshop@BEKI.org.



Prayer and Liturgy Resumes

On the third Wednesday of the month, September 20, explore prayer and liturgy on BEKI [Zoom](#) with Rabbi Carl Astor. Hebrew proficiency is not required. This is not a class, but rather an open forum to learn together and share ideas. For more information, consult Karel Koenig, karelmk59@gmail.com.



Rabbi Carl Astor

Supporting Daily Services

To make sure we have a minyan consistently, please use [Minyan Maker](#). Up top, you choose which weekday service you are planning to attend (morning or afternoon). Then find your name below and choose "I'll be there." If your name does not appear on the list, just use "Guest Member." Prize Code 5784HH2023

Sign up for Torah Reading

If you are able to read an aliyah of Torah or a Haftorah, make your selection via our online [spreadsheet](#). Just scroll down to the proper date to see details about each aliyah. Questions? Consult Rachel Adelstein at ritualcoordinator@beki.org.

Weekly Classes

Join Rabbi Woodward for a discussion of the week's Torah portion on Thursdays 9-9:45 am in the library, following 8:15 am Shacharit.

On select Sundays from 10 to 11 am (after 9 am Shacharit), Rabbi Woodward leads in-person study of Talmud, Chapter 2 Tractate Shabbat. Prior study of Jewish texts is not required.



Help build the BEKI sukkah this year. Details on page 3.

RABBI'S RITUAL CORNER



Each month in this space, I'll brief you on — or expand on — halakhic issues around the synagogue.

When Holy Days Fall on Shabbat

This year, because Rosh Hashanah falls on Shabbat and the day after, we'll have a number of changes to our service. The most prominent change that happens when Rosh Hashanah falls on Shabbat is that we don't blow shofar on the first day (Shabbat), only on the second day (Sunday).

The laws around this are complicated — although sometimes they are accounted as relating to the fear that a person might carry the shofar to synagogue on Shabbat, they are probably mostly derived from the sense that it was only in the Temple itself that instruments could be played on Shabbat.

It's almost a case where two holinesses — that of the holiday, and that of Shabbat — bump into each other, and the ritual effect of this plays out with the shofar being held back for a day.

Also, when Rosh Hashanah falls on Shabbat, tashlich (the symbolic throwing of sins and actual throwing

of breadcrumbs into a river) is delayed until after Shabbat. Although some of this is about carrying the bread outside of town, it's really mostly about the interaction of two holinesses.

Two weeks after Rosh Hashanah, the first day of Sukkot will be observed on Shabbat. On that day, we won't shake the lulav or etrog — we will only sit in the sukkah as our sukkah observance. It's a similar problem.

One of the reasons Shabbat tends to take precedence is that it is "tadir," that is, regular. The significance of the more common or ordinary observance is more important than that of the less common or ordinary one. This might seem strange, but I think it actually reminds us that the holidays are playing out on the spectrum of our regular Jewish lives — not superseding them.

As we reflect on Sukkot, I would also like to urge you to get your own lulav and etrog from the synagogue — we will shake them on the second and following days of Sukkot, and owning your own is wonderful.

Rabbi's Tzedakah Fund

To Katharine Baker, Rabbi Eric Woodward & family with sympathy on the passing of Eric H. Baker by

- Jessey & Joe Palumbo
- Rena Cheskis-Gold & Marty Gold
- Murray & Barbara Akresh
- Margaret Olin
- Trish Loving & Alan Lovins
- Sherry Kent & Richard Kantrowitz
- Cynthia Rubin
- Julie & Sam Katz
- Shelli Farhadian & Michael Chiorazzi
- Alisa & Glenn Levine
- The Lerner Family
- Cathy J. Levine & Jon Groner
- Sid & Donna Levine

Louis J. Petrillo to

- Paul Goldenberg on his birthday
- Paul Goldenberg in memory of Peter Myers

Kiddush Fund

- Jane & Patrick Rivers
- The Leapman Family
- Mimi Glenn, the Manning family, the Rodwin family & the Zubkoff family
- Joanne & Steve Rudolf
- Rachel Bashevkin, Connie Gersick, Jennifer Myer & Nanette Stahl
- Jonathan Gordon & Jonathan Rohner

Chai/Synagogue Fund to support synagogue operations

To Wendy & David Chorney and family with sympathy on

the passing of Deborah DeSenti by

- Ellen Cohen & Steve Fraade
- The Rothman family
- Sid & Donna Levine (to the Ari Nathan Levine Children's Library Fund)

To Michael Winters, Ellen Mackler & family with sympathy on the passing of Paula Winter by:

- Seth Pauker & Tina Rose
- Rena Cheskis-Gold & Marty Gold (to the Barzillai Cheskis BEKI Youth Israel Scholarship Fund)
- Yaron Lew
- Dan & Sharon Prober
- Joanne Foodim & Rob Forbes
- Ellen Cohen & Steven Fraade
- Linda Schultz & Howard Gralla

To Leonid Glazman with sympathy on the passing of Polina Naiman by

- Dan & Sharon Prober
- Ellen Cohen & Steven Fraade

To Roger Colten, Sarah Berry and family with sympathy on the passing of Shirley Colten by

- Seth Pauker & Tina Rose

To Sam Werlin in honor of his Bar Mitzvah by

- Rabbi Carl & Sharon Astor

To Debbie Chirnomas, Mike Hurwitz & family with sympathy on the passing of Rabbi Gerald Chirnomas by

- Jessey & Joe Palumbo

To Jay Sokolow & Ina Silverman in honor of their 65th birthdays by

- Jessey & Joe Palumbo

To Harold Birn with appreciation by

- Jessey & Joe Palumbo

To Margie Wiener in honor of the birth of her grandson Benjamin Reece Wiener by

- Jessey & Joe Palumbo

To Sherry & Steve Rothman in honor of the birth of their new granddaughter by

- Donna Kemper & Ron Zlotoff

To Katharine Baker, Rabbi Eric Woodward & family with sympathy on the passing of Eric H. Baker by

- Rachel Bashevkin
- Bobbie & Harold Miller
- Steve & Rachel Wizner
- Diane Krevolin
- Joanne Foodim & Rob Forbes
- Helen Rosenberg & Keith Richter
- Jay Brown
- Karel Koenig
- Ron Zlotoff & Donna Kemper
- The Lettick Family
- The Rothman Family
- David Schwartz
- Ellen Cohen & Steven Fraade
- Mimi Glenn
- Linda Schultz & Howard Gralla

To Shoshana Zax, John Weiser & family with sympathy on the passing of Marilyn Zax by

- Mimi Glenn

To Roberta Friedman with sympathy on the passing of Margo Wiener by

- Sid & Donna Levine (to the Ari Nathan Levine Children's Library Fund)

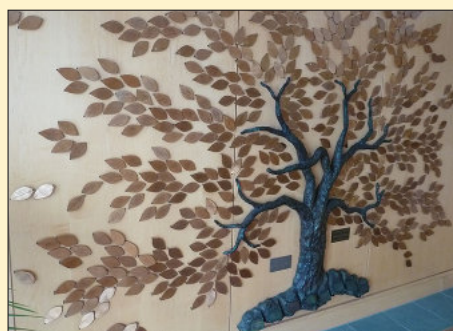
Yahrzeit Fund to support synagogue operations

In Memory of:

- Ben Marks by Lynne Marks
- Ivan Sachs by Linda & Ken Buckman
- Her father Mordechai Rosmarin by Jessey & Joe Palumbo
- Sol Kolodny by Herb & Yvonne Kolodny
- Max Pencherek by Herb & Yvonne Kolodny
- Rose & George Feen by Hildy Feen
- George Ralph Schnitman by Edward & Helene Schnitman Vanderhoef
- Her aunt Lillian Senderoff Resnick by Sherry Kent
- Their father Max Small by Rhoda & Bruce Small
- Arthur Ratner by Leah Ratner & Paul Sobel
- Stuart A. Jacobson by Susan Jacobson
- Her mother Ida Alter Sklaver by Diana Firestone
- Michele Edelkind Lechner by Tamar Edelkind
- Louis Rakita by Tema & Coleman Leviter
- Fannie Siegel by Jonathan Eagan
- His mother Edith Ignal by Alan & Toby Ignal
- Ruth Snyder by Robert Snyder
- Howard P. Goldberg by Eileen Schuman
- Shirley Goldberg by Eileen Schuman

Tree of Life Awaits Your Leaf

The Tree of Life at the entrance to BEKI is a collection of golden leaves that honor people and moments in our lives. For \$118 you can add a leaf. Contact Marjorie Wiener at 203.387.6278 or marjoriewiener@yahoo.com



MICHAEL MARTONE
MANAGER



Arnold's Jewelers

DIAMONDS - WATCHES - GIFTS
CHINA - SILVER - CRYSTAL

WATCH AND
CLOCK REPAIRING

NORTH HAVEN SHOPPING CENTER
NORTH HAVEN, CONN. 06473
203-239-4291

It's not too late to make a pledge or donation to the **Sanctuary Redesign**, or to increase the amount that you have already given. Contact Peggy in our office, or speak to a member of the Fundraising Committee: John Weiser, Murray Akresh, Yaron Lew, Mark Oppenheimer, Jessey Palumbo, or John Wareck



ROBERT E. SHURE, INC.

FUNERAL HOME

Dedicated to the Dignity and Respect of Tradition

543 George Street, New Haven, CT 06511

Robert E. Shure
Founder

203-562-8244
shurefuneralhome.com

James M. Shure
President

RAVIT AVNI-SINGER, MSW LCSW
CHILD, ADOLESCENT AND ADULT PSYCHOTHERAPY
PARENT CONSULTATION

1 BRADLEY ROAD, SUITE 906
WOODBIDGE, CT 06525

(203) 389-9174
BY APPOINTMENT



40 Boston Post Rd (RT 1)
West Haven CT 06516
203-933-2886

888 Wethersfield Ave
Hartford CT 06114
860-296-9799

www.startireandwheels.com
Andy & Paige Weinstein

NOLAN'S

HAMDEN MONUMENT COMPANY

LICHTENSTEIN COMPANY

323 Washington Ave. Hamden CT 06518

(203) 288-8486

(203) 287-1593

CT toll free only (800) 852-8865

Fax (203) 287-1593

John Nolan

Michael Nolan

nolansmonuments@att.net

Child and Adolescent Health Care, L.L.C.

A. Joseph Avni-Singer, M.D., FAAP

Shari Storeygard, M.D., FAAP

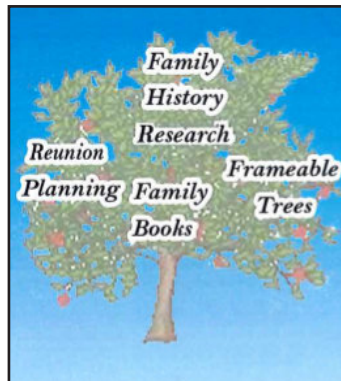
Shannon Martinello, M.D., FAAP

Miranda Bik-Yin Ip, M.D., FAAP

Namita Wijesekera, M.D., FAAP

303 WHITNEY AVENUE
NEW HAVEN, CT 06511
(203) 776-1243
FAX (203) 785-1247

1 BRADLEY ROAD, SUITE 102
WOODBIDGE, CT 06525
(203) 397-1243
FAX (203) 397-1241



Many Generations

Kim Formica
Genealogist

PO Box 1248
Orange, CT 06477
tel. 203/376.8551

kimformica@optonline.net



**Challenging Minds,
Nurturing Hearts**

Grow with us!

Ezra Academy is a preschool through 8th grade Jewish day school offering outstanding academics and a nurturing community, rooted in the Jewish tradition of critical thinking and ethical behavior.



LEARN MORE:
EZRAACADEMYCT.ORG
INFO@EZRAACADEMYCT.ORG

SCHEDULE A TOUR:
EZRAACADEMYCT.ORG/VIRTUAL-TOUR



**EZRA ACADEMY
WELCOMES A WIDE
SPECTRUM OF
RELIGIOUS AND
CULTRAL BELIEFS AND
AFFILIATIONS.**





What will your Jewish legacy be?

Marjorie Wiener Created a Legacy for Her Synagogue, Congregation Beth El-Keser Israel

"I walked into BEKI in 1997 when my older son Matthew was going to start preparation for his Bar Mitzvah. I wanted to be a part of that process, and the Rabbi made sure we were all included. I immediately felt drawn in. BEKI is my community and my Jewish soul." –Margie



Create your Jewish legacy today by scanning the **QR Code** or visiting newhavenjewishfoundation.org/create-a-jewish-legacy

GR *Greenberg Rhein & Margolis Inc.*

David B. Margolis, CIC

1768 Litchfield Turnpike (Rte. 69)
Woodbridge CT 06525-2309
Tel: (203) 389-4511 • Direct (203) 907-4829
Fax (203) 397-2266 • Cell: (203) 668-0344
Email: david@grminsurace.com
www.grminsurace.com



**Hamden Hall
Country Day School**

Educating students in
PreSchool through Grade 12.

We celebrated National Mix It Up Day
in October to foster greater respect
and understanding among our students.

www.hamdenhall.org 203.752.2610
1108 Whitney Ave., Hamden, CT 06517

CW *Coachworks*
of West Haven
Auto Body Shop

1058 Orange Avenue • West Haven, CT 06516
Tel: 203.932.1200 Fax: 203.932.1222
Scott Walstedter

**BEKI'S FAVORITE
DJ/MC ENTERTAINMENT**

**CALL CHARLES!!!
203.795.4737**

CHANGING AND THE NEW YEAR

My column for the September bulletin is always the hardest to write. What can I say without preempting my High Holiday sermons? Do I pretend this is a totally normal Jewish month, and just write about the parashah? Do I write about the start of school?

How about: all of the above? September-Tishrei brings us the start of the school year for many people, the ending and beginning of a new cycle of Torah reading, and the Yamim Noraim. It is a month of great transition.

January is an unfortunate time for a new year. What's new about January 1? Other than the calendar ticking over, it's not a time of renewal.

But the fall? "Season of mists and mellow fruitfulness," John Keats wrote. It's a time when we feel change all around us, when the weather and trees change, when how we spend our time changes, and we have these beautiful holidays to mark it.

This year, I'd like to ask you to focus on change in your high holiday reflection. What is changing in your life? What is changing in the world around you? How are you changing? What changes do you want to encourage, and what do you want to arrest?

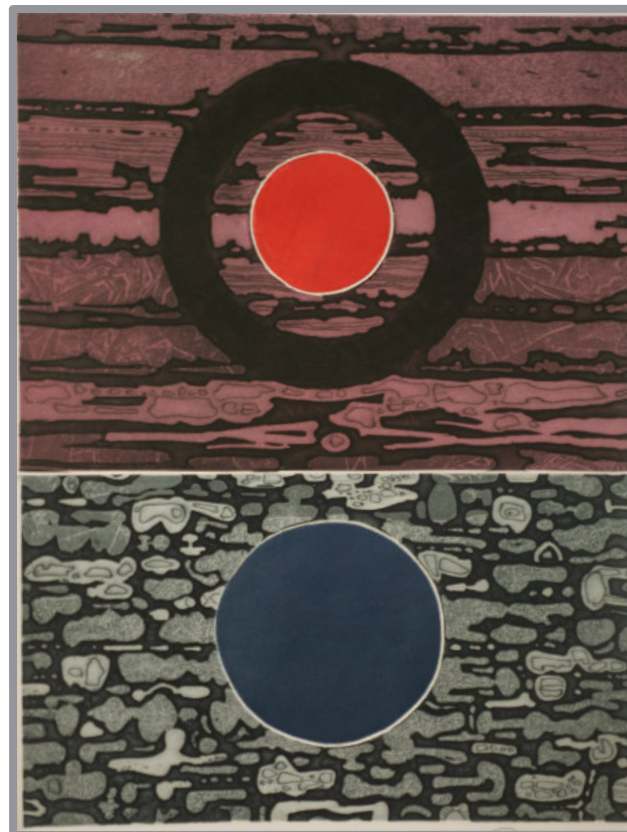
The wisdom of the Unetaneh Tokef prayer that we say on Rosh Hashanah and Yom Kippur is that it depicts the change that occurs in our lives along the backdrop of things that are consistent. The paradigm for this is that God is unchanging and we do change. What are things in your life that have been consistent? What are things that need

change? Reflecting on permanence and impermanence is a way to help us see changes in seemingly permanent things as possible. We can shake off the chains of slavery; we can create new ways of living; we can change our behaviors.

This year, notice the change around you. Reflect on change in the last year. And empower yourself for change in the coming year. Shanah Tovah.



Eric Woodward



**Gabor Peterdi, Sunset and After, 1966;
from A Genesis, a suite of 15 etchings, half of which
are on display in the BEKI Beit Midrash.**

Learn how you can live forever!

Be remembered forever by BEKI with a gift in your will, trust, retirement account, or life insurance policy. Or honor a family member by making a tribute gift to BEKI in your will.

Margie Wiener is featured in this issue's Legacy donor ad (turn back one page). "I walked into BEKI in 1997," she explains. "My older son Matthew was going to start preparation for his Bar Mitzvah."

They had been members of an Orthodox shul, but Margie wanted to join a Conservative congregation. BEKI

immediately felt like home since a relative, Milton Smirnoff, was a past president and Alan Lovins, her Rabbi during her teen years, was a member.

"BEKI is my community and my Jewish soul," she says. "It is vital that we leave a Legacy to this place for the ones who follow us."

For more information on how you can make these arrangements, contact our Finance Chair, Attorney Donna Levine at sdsij@aol.com or 203.668.6473.

If you've included BEKI in your estate plans, please let us know.

Saturday

Oct 1 Sukkah Hop
Oct 4 Apizza in the Sukkah
Oct 6 Hoshanah Rabbah
Oct 8 Simchat Torah
Oct 14 Miriam Perry b'mitzvah
Oct 21 Esther Schonberger b'mitzvah
Oct 27-28-29 Elm City Kallah

<p>3</p> <p>9am In-person & Zoom service 12pm Anna Broelle Bresnick: Closing Reception/Portfolio Sale 12-8pm Directory Photo Shoot (by appt only) 5:45pm In-person & Zoom service</p> <p>17 Elul</p>	<p>4</p> <p>Office Closed 9am In-person & Zoom service (Federal Holiday Service Time) 5:45pm In-person & Zoom service</p> <p>18 Elul</p>	<p>5</p> <p>7am In-person & Zoom service 5:45pm In-person & Zoom service</p> <p>19 Elul</p>	<p>6</p> <p>7am In-person & Zoom service 5:45pm In-person & Zoom service</p> <p>20 Elul</p>	<p>7</p> <p>8:15am In-person & Zoom service 9am Torah Study 5:45pm In-person & Zoom service</p> <p>21 Elul</p>	<p>8</p> <p>7am In-person & Zoom service 6pm Kabbalat Shabbat 6:55pm Candle Lighting</p> <p>22 Elul</p>	<p>9</p> <p>Selichot 9:15am Shabbat Service (Sanctuary, in-person) 11am Children's Havura, K-2 Kehila, Jr. Cong 12:45pm Meditation w/Robin Goldberg 7-8:30pm Selichot Programming</p> <p>23 Elul</p>
<p>10</p> <p>9am BINA Day 1 9am In-person/Zoom service 10am Talmud Study 10am Back to Shul 12-8pm Directory Photo Shoot 12:30pm Kadima Reverse Tashlich 4:30pm Greeter Training 5:45pm In-person/Zoom service</p> <p>24 Elul</p>	<p>11</p> <p>7am In-person & Zoom service 5:45pm In-person & Zoom service 6:15pm Greeter Training 7:30pm Executive Board Meeting (on-line)</p> <p>25 Elul</p>	<p>12</p> <p>7am In-person & Zoom service 5:45pm In-person & Zoom service</p> <p>26 Elul</p>	<p>13</p> <p>7am In-person & Zoom service 4pm BINA 5:45pm In-person & Zoom service</p> <p>27 Elul</p>	<p>14</p> <p>8:15am In-person & Zoom service 9am Torah Study 5:45pm In-person & Zoom service</p> <p>28 Elul</p>	<p>15</p> <p>Erev Rosh Hashanah Operation Isaiah Food Drive Begins 7am In-person & Zoom service 6pm Kabbalat Shabbat 6:43pm Candle Lighting</p> <p>29 Elul</p>	<p>16</p> <p>Rosh Hashanah I 9:15am Rosh Hashanah Day I 10:45am & 12pm Children's Service Sessions 7:43pm Candle Lighting</p> <p>1 Tishri</p>
<p>17</p> <p>Rosh Hashanah II No BINA 9:15am Rosh Hashanah Day II 10:45am & 12pm Children's Service Sessions 4pm Tashlich at Whitney Bridge 4pm Tashlich at Edgewood Bridge followed by Minchah</p> <p>2 Tishri</p>	<p>18</p> <p>Fast of Gedaliah 7am In-person & Zoom service 5:45pm In-person & Zoom service</p> <p>3 Tishri</p>	<p>19</p> <p>7am In-person & Zoom service 5:45pm In-person & Zoom service</p> <p>4 Tishri</p>	<p>20</p> <p>7am In-person & Zoom service 4pm BINA 5:45pm In-person & Zoom service 7:30pm Prayer & Liturgy w/Rabbi Carl Astor</p> <p>5 Tishri</p>	<p>21</p> <p>8:15am In-person & Zoom service 9am Torah Study 5:45pm In-person & Zoom service</p> <p>6 Tishri</p>	<p>22</p> <p>7am In-person & Zoom service 6pm Shabbat Shuvah Service 6:31pm Candle Lighting</p> <p>7 Tishri</p>	<p>23</p> <p>9:15am Shabbat Shuvah Service (Sanctuary, in-person) 11am Children's Havura, K-2 Kehila, Jr. Congregation</p> <p>8 Tishri</p>
<p>24</p> <p>Erev Yom Kippur No BINA 9am In-person/Zoom service 9:30am Sukkah Building 10am Kever Avot/Warner St 11am Kever Avot/Farwell St 12pm Directory Photos 6:28pm Candle Lighting 6:30pm Erev Yom Kippur Service</p> <p>9 Tishri</p>	<p>25</p> <p>Yom Kippur (Yizkor) Office Closed 9am Yom Kippur Service 10:45am & 12pm Children's Service Sessions 3 & 3:45pm Study Sessions 5pm Minchah 6:15pm Neilah & Havdalah</p> <p>10 Tishri</p>	<p>26</p> <p>7am In-person & Zoom service 5:45pm In-person & Zoom service</p> <p>11 Tishri</p>	<p>27</p> <p>7am In-person & Zoom service 4pm BINA 4pm Sukkah Completion 5:45pm In-person & Zoom service</p> <p>12 Tishri</p>	<p>28</p> <p>8:15am In-person & Zoom service 9am Torah Study 5:45pm In-person & Zoom service</p> <p>13 Tishri</p>	<p>29</p> <p>Erev Sukkot 7am In-person & Zoom service 6pm Erev Sukkot Minchah & Maariv 6:19pm Candle Lighting</p> <p>14 Tishri</p>	<p>30</p> <p>Sukkot I 9:15am Sukkot Day I (Sanctuary, in-person) 11am Children's Havura, K-2 Kehila, Jr. Congregation 7:19pm Candle Lighting</p> <p>15 Tishri</p>

Saturdays

9:15am Shaharit

Advertise in the Bulletin

Would you like your ad here in the coming year? Each month, the BEKI bulletin reaches over 700 households, most of them in the New Haven area. Check with Peggy in the BEKI office about our variety of ad rates.

Easy Fundraiser

The Stop & Shop gift cards sold by the BEKI office are debit cards for groceries or gasoline. This is an ongoing fundraiser that costs you nothing. Contact Peggy office@beki.org to arrange pickup.

Join BEKI on Facebook

Everyone is encouraged to join the [BEKI Facebook group](#). You'll enjoy the humor, community information, and links to cultural opportunities. You'll want to choose the private group with the stained-glass window image. Just ask to join. (The BEKI page with the hamsa is the public-facing page, which has few postings).

E-Statements

Due to rising costs and BEKI's efforts to be more Earth-friendly, we have transitioned to e-statements and e-yahrzeits. If you prefer to receive them by paper, please contact the BEKI office at office@beki.org or 203-389-2108 x114. The BEKI Green Team supports BEKI's movement toward paperless communications and hopes the community will also.

Services

All services are also available on Zoom except Friday night and Saturday morning.

Sunday 9 am	Wednesday 7 am
Sunday 5:45 pm	Wednesday 5:45 pm
Monday 7 am	Thursday 8:15 am
Monday 5:45 pm	Thursday 5:45 pm
Tuesday 7 am	Friday 7 am
Tuesday 5:45 pm	Friday 6 pm
	Saturday 9:15 am

For the latest information on services, check [Happenings](#) or email bekitefilla@gmail.com